



ORIENTAL MINDORO

FACTS & FIGURES



2013

Provincial Planning and Development Office

ORIENTAL MINDORO FACTS AND FIGURES 2013

TABLE OF CONTENTS

	Page
General Information	1
Administrative Map	2
Land and Other Natural Resources	3
a. Land Area by Municipality	3
b. Land Classification Statistics	3
c. Geographical Zone Surfaces	3
d. Mineral Resources	4
e. Forest Cover	4
f. Coastal Resources	5
Demography	8
a. Population Size by Municipality by Census Years	8
b. Actual and Projected Population and Number of Households, Growth Rate by Municipality	9
c. Life Expectancy	9
d. Projected Population by Province, MIMAROPA	10
e. Urban-Rural Population	10
f. Population Density	11
g. Mangyan Tribes by Municipality	11
h. Mangyan Households by Sex	12
Economic Profile	13
a. Agriculture	13
b. Tourism	18
c. Commerce and Industry	22
Infrastructure and Utilities	24
a. Transportation	24
b. Communication	25
c. Water	27
d. Power	28

Social Development Profile	30
a. Labor and Employment	30
b. Poverty and Income	30
c. Health	33
d. Education	36
e. Social Welfare Services	37
f. Protective Services	37
Financial Profile	39
a. Income Classification of City/Municipality	39
b. Annual Income and Budget Per City/Municipality	39
c. Income and Expenditure, Provincial Government f Oriental Mindoro	40
Institutional Profile	41
a. Organizational Chart of the Provincial Government of Oriental Mindoro	41
b. Provincial Government Personnel by Office	42

General Information

A. LOCATION

Oriental Mindoro is located in Region IV-B, otherwise known as the MIMAROPA Region. It lies 45 kilometers south of Batangas and 130 kilometers south of Manila.

B. BOUNDARY

It is bounded on the North by Verde Island Passage; Maestro del Campo Island and Tablas Strait on the East; Semirara Island on the South; and Occidental Mindoro on the West.

B. TOPOGRAPHY

Oriental Mindoro has a rugged terrain and an irregular coastline. Numerous rivers and streams traverse the province but none are navigable by large vessels.

C. CLIMATE

The province has two climate types: Type I and Type III. Type I is characterized by two pronounced seasons, dry and wet. Type III has no pronounced season, relatively dry from November to April and wet during the rest of the year.

D. LAND AREA

Oriental Mindoro has a total land area of 4,364.72 square kilometers or 436,472 hectares. It represents 1.5 % of the total land area of the country and 16% of the MIMAROPA Region.

F. LEGAL BASIS: RA 505 (Division of Mindoro)

G. DATE OF APPROVAL: November 15, 1950

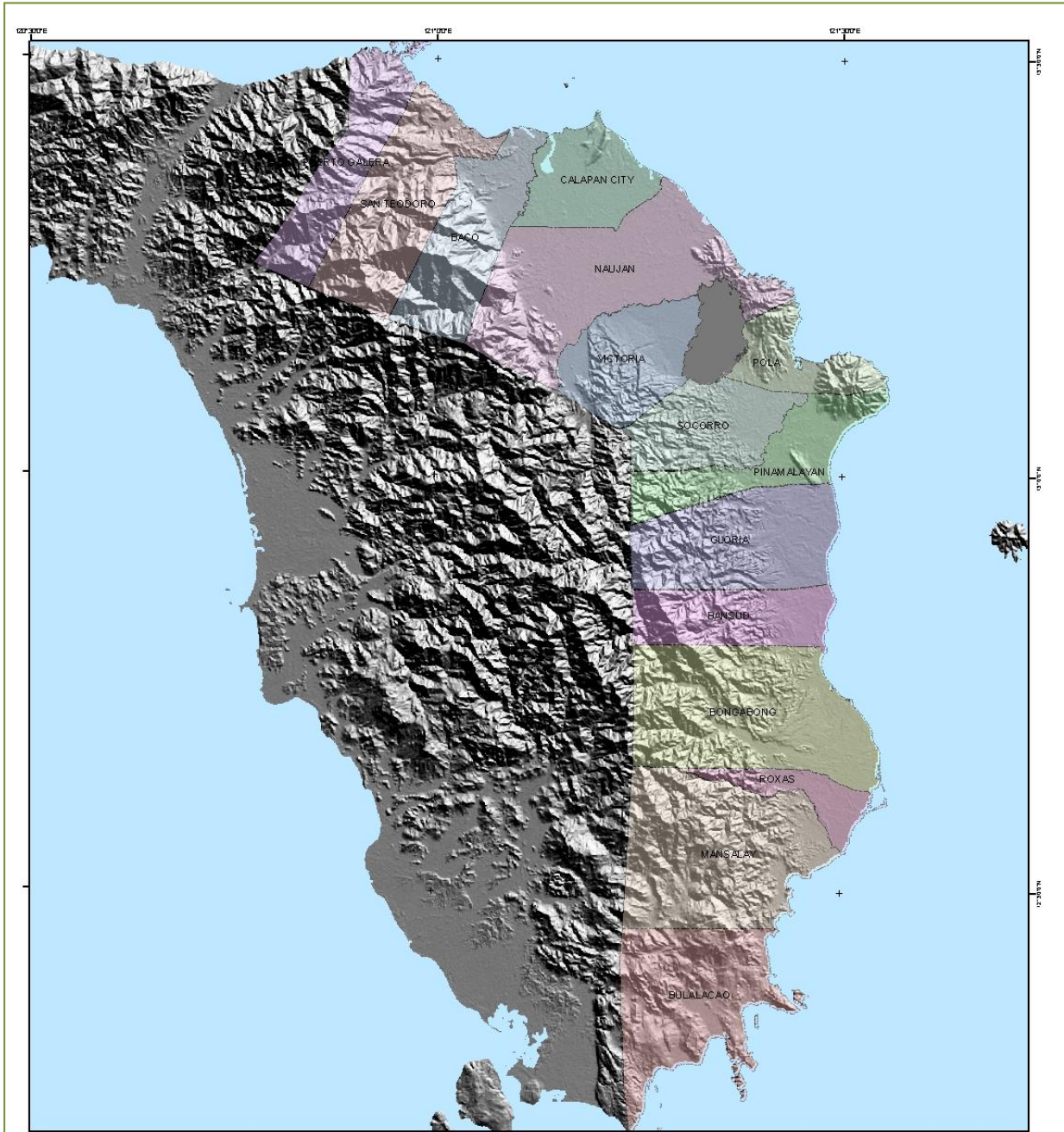
H. CONGRESSIONAL DISTRICTS: two

I. NUMBER OF COMPONENT CITY: one

J. NUMBER OF MUNICIPALITIES: 14

K. NUMBER OF BARANGAYS: 426

L. CAPITAL: Calapan City



ADMINISTRATIVE MAP

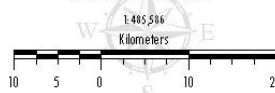
- Legend**
- | | |
|--|--|
| | |
| | |
| | |
| | |
| | |
| | |
| | |
| | |

Technical Notes:
Boundaries are not authoritative.

Map prepared by:
Provincial Planning and Development Office - Provincial Government of Oriental Mindoro in
cooperation with the National Economic and Development Authority Region 4B (NEDAO) under the
Integrating Disaster Risk Reduction and Climate Change Adaptation (IMRCCA) in
Local Development and Decisionmaking Processes Project



PROVINCE OF ORIENTAL MINDORO
REGION 4B - MIMAROPA



SPHEROID: UTM
PROJECTION: UNIVERSAL TRANSVERSE MERCATOR
MERIDIAN DATUM: WGS84
HORIZONTAL DATUM: LUCSON DATUM



Map Sources:
Administrative Boundaries, National Roads, Rivers and Spot Elevation, NAIP/2 Topographic
Map 1:250,000 scale

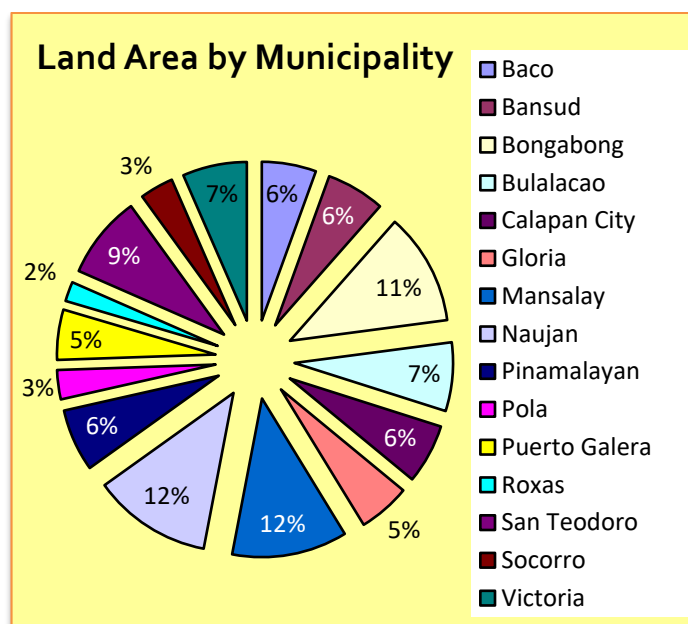
Janis & H.J. Bantec & Nelson, F. Girones, 2008. Hole-filled seamless 500m DEM-4094,
International Centre for Tropical Agriculture (CIAT), available from <http://srm.cgiar.org>.

Provincial Planning and Development Office (PPDO) Project, 2011

Land and other Natural Resources

A. LAND AREA BY MUNICIPALITY

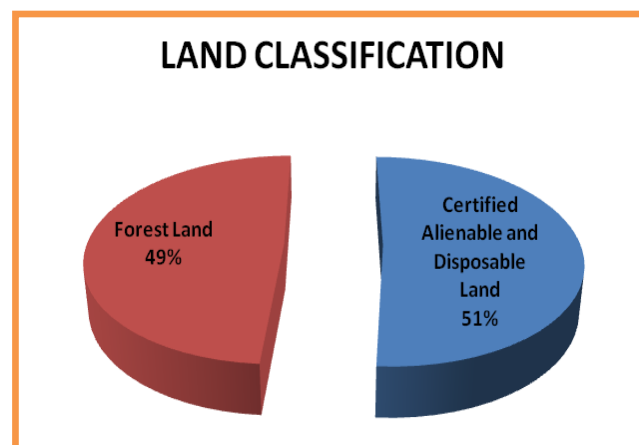
Municipality	Land Area (sqkm)	% to Total
Baco	241.70	5.54
Bansud	260.00	5.96
Bongabong	498.20	11.41
Bulalacao	305.12	6.99
Calapan City	265.20	6.08
Gloria	230.80	5.29
Mansalay	513.10	11.76
Naujan	528.00	12.10
Pinamalayan	277.30	6.35
Pola	130.20	2.98
Puerto Galera	223.50	5.12
Roxas	87.10	1.99
San Teodoro	369.10	8.46
Socorro	149.40	3.42
Victoria	286.00	6.55
TOTAL	4,364.72	100.00



B. LAND CLASSIFICATION STATISTICS

		Area in Hectares
Certified Alienable and Disposable Land		222,895
Forest Land		213,577
Unclassified	148	
Classified	213,429	
Total		436,472

Source: NAMRIA 2009



C. GEOGRAPHICAL ZONE SURFACES

☛ Coastal Areas	342.45 km
☛ Lake Areas	81.28 sqkm
☛ Riparian areas, rich fertile valleys and mountainous areas	89% of its total land mass

D. MINERAL RESOURCES

1. Location of Metallic Mineral Resources

Mineral Commodity	Location
Gold	Baco (Dulangan and Binaybay), Puerto Galera
Copper	Naujan (San Andres), Socorro, Bongabong (Acliang and Pajo)
Chromite	Gloria (Banus 1 & 2), Bansud
Nickel	Bansud, Bongabong, Victoria
Iron	Baco (Binaybay), Puerto Galera (Balatero)
Marble	San Teodoro

Source: Mines & Geosciences Bureau, 2011 and Environment & Natural Resources Office, 2011

2. Non-Metallic Minerals (Gravel and Sand)

City/Municipality	Total [cu.m.]	Total Value (Php)	City/Municipality	Total [cu.m.]	Total Value (Php)
First District			Second District		
Baco	8,750	150,087.50	Gloria	19,500	259,380.00
Calapan City	48,500	612,122.50	Bongabong	143,750	2,123,612.00
Naujan	217,500	2,765,525.00	Roxas	22,250	299,253.00
Victoria	22,500	329,423.00	Mansalay	9,750	132,047.50
Socorro	3,750	46,875.00	Bulalacao	500	23,437.50
			Pinamalayan	7,500	95,315.00
Total	301,000	3,904,033.00	Total	203,250	2,933,045.00

Source: Environment and Natural Resources Office, 2013

E. FOREST COVER

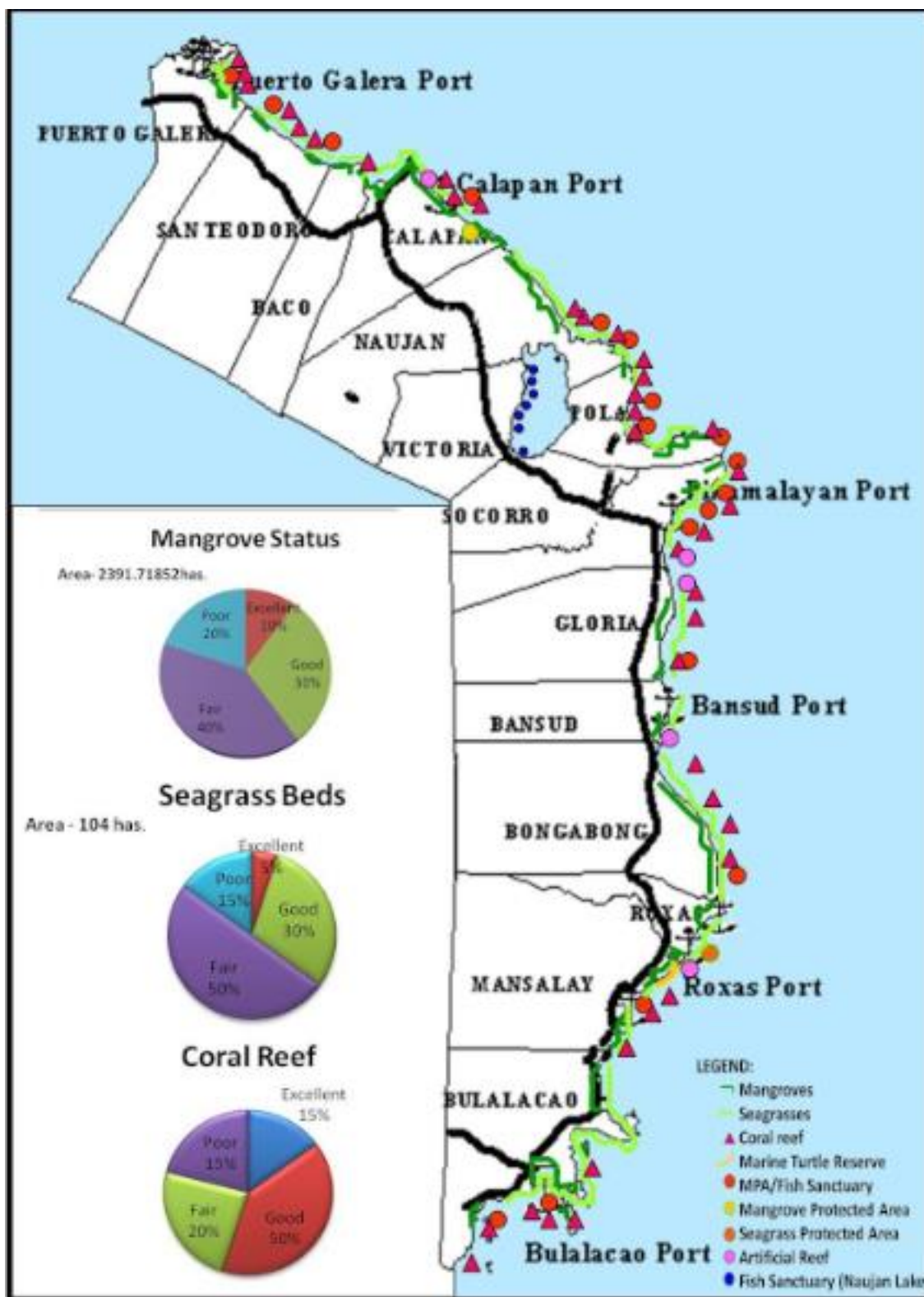
Forest cover of MIMAROPA in hectares by province, December 31, 2010

PROVINCE	CLOSED FOREST	OPEN FOREST	MANGROVE	TOTAL FOREST
Marinduque	0	12,255	2,877	15,132
Occidental Mindoro	1,968	101,424	1,594	104,986
Oriental Mindoro	5,301	77,731	3,949	86,981
Palawan	86,877	541,590	63,821	692,288
Romblon	3,664	11,529	1,084	16,277
MIMAROPA	97,810	744,530	73,324	915,664

Source: <http://forestry.denr.gov.ph/landuse4b.htm>

F. COASTAL RESOURCES

1. Coastal Resources Map of Oriental Mindoro



2. Major Species Commonly Caught

- Tanigue, tambakol, malasugi, mamsa, lapu-lapu, galunggong, tuna, herrings, hasa-hasa, kalapato, caranx, dalagang-bukid, alumahan, bisugo, samaral, anchovies, sardines

3. Minor Species other than Fish

- Squid, shrimp, prawn, octopus, mudcrab, shells, lobster, cuttlefish, mussel, oyster, blue crabs, seaweed, sea cucumber

4. Established Marine Protected Areas

Location/ Municipality	Barangay	Name of MPA	Area (has.)	Year Established
Calapan City	Lazareto	HarkaPiloto Fringing Reef Fish Sanctuary	37.44	2003
	Silonay	Silonay Mangrove Conservation Area	41.00	2010
San Teodoro	Ilag	Punta Ilag Fish Sanctuary	23.10	2006
	Tacligan	Tamauyan Reef Fish Sanctuary	89.37	2006
Puerto Galera	San Antonio	Pto. Galera Fish Sanctuary	4,828.00	2006
Naujan	SitioTujod, Herrera	Tujod Fish Sanctuary	30.00	2006
	Masaguig	Masaguig Fish Sanctuary	16.39	2010
Pola	Bacawan	Bacawan Fish Sanctuary	23.44	2006
	Putting Cacao	St. John the Baptist Fish Sanctuary	49.38	2010
	Tagumpay	St. Peter the Rock MPA	25.11	2010
	Calima	Stella Mariz Fish Sanctuary	30.12	2013
	Misong	Song of the Sea Fish Sanctuary	60.61	2013
Pinamalayan	Tiguihan	Kingfisher Fishery Reserve	14.66	2013
	Ranzo	Ranzo Fish Sanctuary	16.39	2006
	SitioSimboryo, Banilad	Banilad-Simboryo MPA	10.41	2010
	SitioGinapangan, Banilad	Banilad-Ginapangan MPA	10.28	2010
Gloria	SitioBulaklak, Pili	Pili Marine Protected Area	24.00	2010
	Agsalin	Agsalin Fish Sanctuary	80.13	2003
	Sta. Theresa	Sta. Theresa Fish Reserve	14.00	2013
Bansud	Tambong	Tambong Fishery Reserve	80.4	2013
	Proper Tiguisan	Bansud Fish Sanctuary	45.07	2010
Bongabong	Masaguisi	Masaguisi Fish Sanctuary	21.68	2003
Roxas	Paclasan	PaclasanSeagrass Protected Area	30.00	2010
Mansalay	Palaylay Cove & Balanga Point, B. Del Mundo	Palaypay Cove Fish Sanctuary	82.79	2006
	Sta. Brigida	Allegria Sea Turtle Habitat (Tikling Point)	8.2	2008
Bulalacao	Balatasan	Balatasan Fish Sanctuary	179.00	1993
	Maujao	Maujao Fish Sanctuary	40.00	2009

Source: Provincial Agriculture Office, 2013

5. Marine Protected Areas as Percent of Total Area of Municipal Waters

MUNICIPALITY	MUNICIPAL WATERS	MPA (has.)	MPA Percentage
Baco	16,004.16	0	0
Bansud	13,218.54	45.07	0.341
Bongabong	59,250.33	21.68	0.037
Bulalacao	32,112.78	219.00	0.682
Calapan City	26,726.81	78.44	0.293
Gloria	13,684.06	174.53	1.275
Mansalay	22,974.30	90.99	0.396
Naujan	29,619.73	46.39	0.157
Pinamalayan	30,800.53	61.08	0.198
Pola	30,994.38	203.32	0.656
Puerto Galera	13,916.91	4,828.00	34.692
Roxas	16,965.92	30.00	0.177
San Teodoro	4,520.27	112.47	2.488
Total	310,788.73	5,910.97	1.902

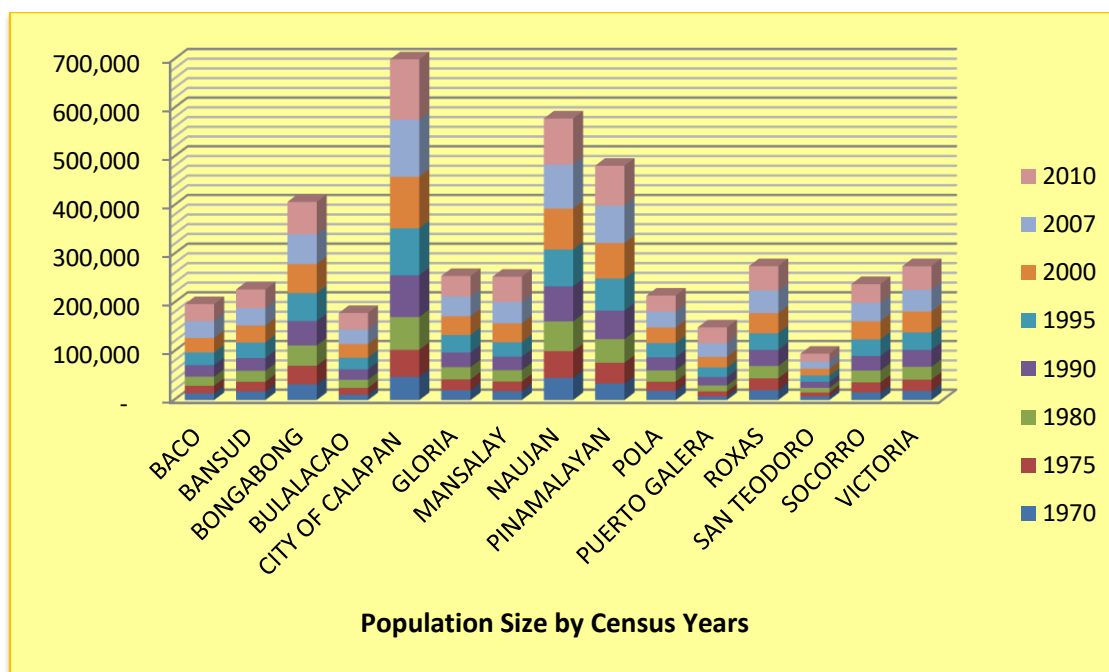
Source: Provincial Agriculture Office, 2013

Demography

A. POPULATION SIZE BY MUNICIPALITY BY CENSUS YEARS

PROVINCE/ MUNICIPALITY	CENSUS YEARS							
	1970	1975	1980	1990	1995	2000	2007	2010
ORIENTAL MINDORO	328,364	388,744	446,938	550,049	608,616	681,818	735,769	785,602
Baco	13,687	15,738	18,607	23,800	25,915	30,167	34,127	35,060
Bansud	17,492	20,095	22,614	26,225	31,901	35,032	35,664	38,341
Bongabong	32,167	38,358	41,719	50,213	57,403	59,477	61,127	66,569
Bulalacao	10,857	14,038	16,926	21,316	24,047	27,698	30,188	33,754
City of Calapan	47,532	55,608	67,370	85,898	96,506	105,910	116,976	124,173
Gloria	20,147	22,249	25,291	30,102	35,771	38,667	40,561	42,012
Mansalay	18,395	19,544	23,548	27,515	29,765	39,041	43,974	51,705
Naujan	45,685	54,641	61,216	72,203	75,726	83,892	90,629	94,497
Pinamalayan	33,936	42,701	48,431	58,777	65,903	72,951	77,119	81,666
Pola	18,789	19,072	23,188	26,833	29,156	31,938	32,635	32,984
Puerto Galera	7,659	10,129	12,306	17,200	19,485	21,925	28,035	32,521
Roxas	20,342	24,273	25,458	33,178	34,045	41,265	46,711	49,854
San Teodoro	7,721	7,862	9,707	12,223	12,983	13,806	15,039	15,810
Socorro	15,456	20,868	24,332	29,806	34,182	37,176	38,052	38,348
Victoria	18,499	23,568	26,225	34,760	35,828	42,873	44,932	48,308

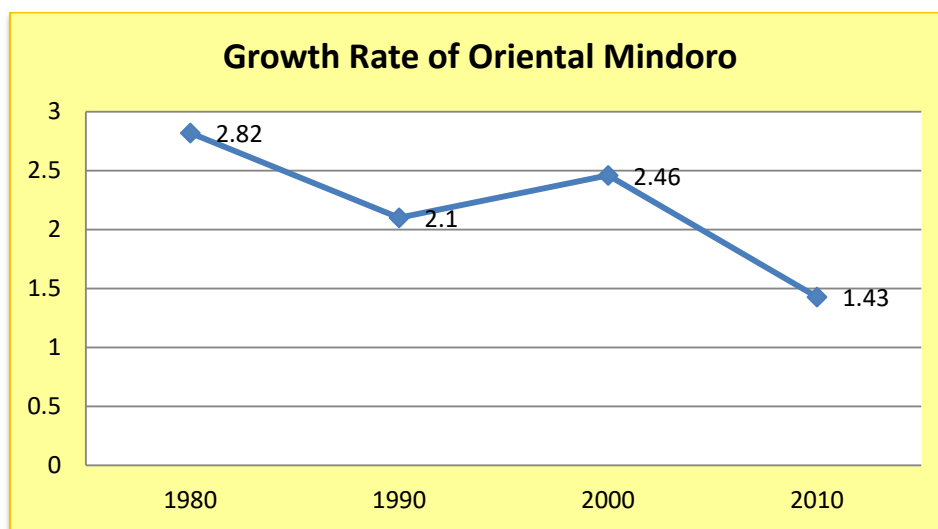
Source: National Statistics Office



B. ACTUAL AND PROJECTED POPULATION AND NUMBER OF HOUSEHOLDS, GROWTH RATE BY MUNICIPALITY

City/ Municipality	2010 (Actual)		2013 (Projected)		Growth Rate	
	Total Pop'n	No. of HH	Total Pop'n	No. of HH	2000-2007	2000-2010
Baco	35,060	7,483	36,672	7,827	1.71	1.51
Bansud	38,341	8,459	39,397	8,692	0.25	0.91
Bongabong	66,569	14,758	68,851	15,264	0.38	1.13
Bulalacao	33,754	7,427	35,820	7,882	1.19	2.00
Calapan City	124,173	27,242	130,229	28,571	1.38	1.60
Gloria	42,012	9,400	43,067	9,636	0.66	0.83
Mansalay	51,705	10,193	56,253	11,090	1.65	2.85
Naujan	94,497	21,479	97,940	22,262	1.07	1.20
Pinamalayan	81,666	18,043	84,466	18,662	0.77	1.13
Pola	32,984	7,582	33,302	7,655	0.30	0.32
Puerto Galera	32,521	7,661	36,603	8,623	3.45	4.02
Roxas	49,854	10,386	52,766	10,993	1.72	1.91
San Teodoro	15,810	3,508	16,464	3,653	1.19	1.36
Socorro	38,348	8,850	38,706	8,933	0.32	0.31
Victoria	48,308	10,485	50,068	10,867	0.65	1.20
OR. MDO.	785,602	172,956	819,789	180,483	1.06	1.43

Source: National Statistics Office, 2010 Census of Population



C. LIFE EXPECTANCY

Life Expectancy at Birth*	2010-2015	2005-2010	2000-2005
Male	68.85	67.35	65.85
Female	73.69	72.19	70.69

* in years; medium assumption; 2000 Census-Based National, Regional and Provincial Projections
Source: NSO Quickstat, August 2013

D. PROJECTED POPULATION BY PROVINCE, MIMAROPA, 2012-2014

Province	Actual Population	Growth Rate	Population Projection		
	2010	2000-2010	2012	2013	2014
Occidental Mindoro	452,971	1.76	469,056	477,311	485,712
Oriental Mindoro	785,602	1.43	808,231	819,789	831,512
Marinduque	227,828	1.60	235,177	238,940	242,763
Romblon	283,930	0.72	288,033	290,107	310,995
Palawan	771,667	2.66	813,266	834,899	857,107
Puerto Princesa City	222,673	3.24	237,336	245,026	252,965
MIMAROPA	2,744,671	1.79	2,851,099	2,906,071	2,958,090

Note: 2010– actual National Statistics Office Census of Population

E. URBAN-RURAL POPULATION

City/Municipality	No. of Brgys.			Population, 2007				Population, 2010			
	Urban	Rural	Total	Urban	%	Rural	%	Urban	%	Rural	%
Oriental Mindoro	59	367	426	157,897	21.46	577,872	78.54	167,849	21.37	617,753	78.63
Baco	1	26	27	2,717	7.96	31,410	92.04	2,846	8.12	32,214	91.88
Bansud	3	10	13	12,245	34.33	23,419	65.67	14,181	36.99	24,160	63.01
Bongabong	1	35	36	1,306	2.14	59,821	97.86	1,626	2.44	64,943	97.56
Bulalacao	4	11	15	8,858	29.34	21,330	70.66	10,624	31.47	23,130	68.53
Calapan City	5	57	62	20,127	17.21	96,849	82.79	18,131	14.60	106,042	85.40
Gloria	6	21	27	13,106	32.31	27,455	67.69	12,924	30.76	29,088	69.24
Mansalay	3	14	17	11,682	26.57	32,292	73.43	13,620	26.34	38,085	73.66
Naujan	4	66	70	9,165	10.11	81,464	89.89	9,040	9.57	85,457	90.43
Pinamalayan	9	28	37	25,717	33.35	51,402	66.65	27,803	34.04	53,863	65.96
Pola	2	21	23	1,296	3.97	31,339	96.03	1,085	3.29	31,899	96.71
Puerto Galera	3	10	13	9,920	35.38	18,115	64.62	11,577	35.60	20,944	64.40
Roxas	4	16	20	16,748	35.85	29,963	64.15	18,151	36.41	31,703	63.59
San Teodoro	1	7	8	1,990	13.23	13,049	86.77	1,734	10.97	14,076	89.03
Socorro	6	20	26	8,394	22.06	29,658	77.94	8,295	21.63	30,053	78.37
Victoria	7	25	32	14,626	32.55	30,306	67.45	16,212	33.56	32,096	66.44

Source: National Statistics Office, National Statistical Coordination Board, 2007 and 2010

Note: Details may not add up to totals due to rounding

F. POPULATION DENSITY

City/Municipality	GROSS POPULATION DENSITY (per sq.km.)		URBAN POPULATION DENSITY (per sq.km.)	
	2007	2010	2007	2010
Oriental Mindoro	169	180	440	467
Baco	141	145	625	655
Bansud	137	147	992	1149
Bongabong	123	134	261	325
Bulalacao	99	111	99	119
Calapan City	441	468	4541	4091
Gloria	176	182	535	527
Mansalay	86	101	231	270
Naujan	172	179	466	460
Pinamalayan	278	295	934	1010
Pola	251	253	25920	21700
Puerto Galera	125	146	249	291
Roxas	536	572	1174	1272
San Teodoro	41	43	3618	3153
Socorro	255	257	252	249
Victoria	157	169	441	489

Source: National Statistics Office/ Provincial Planning and Development Office, 2007 and 2010

G. MANGYAN TRIBES BY MUNICIPALITY

Municipality	Tribes	Municipality	Tribes
First District		Second District	
Puerto Galera	Iraya	Pinamalayan	Tadyawan/Tau-buid
San Teodoro	Iraya, Alangan	Gloria	Tadyawan
Baco	Iraya, Alangan	Bansud	Buhid/Bangon
Naujan	Alangan, Tadyawan	Bongabong	Buhid/Bangon
Victoria	Alangan, Tadyawan, Hanunoo	Roxas	Buhid/Bangon
Socorro	Tadyawan	Mansalay	Hanunoo
Pola	Tadyawan	Bulalacao	Hanunoo

Source: Mangyan Mission and National Commission for Indigenous Peoples, 2009

H. MANGYAN HOUSEHOLDS BY SEX, 2008

City/Municipality	Number of Mangyan Households		
	Total	Male	Female
Baco	4,995	2,568	2,427
Bansud	1,719	869	850
Bongabong	5,536	2,917	2,619
Bulalacao	10,195	5,307	4,888
Calapan City	117	52	65
Gloria	932	462	470
Mansalay	8,600	4,395	4,205
Naujan	4,654	2,395	2,259
Pinamalayan	1,171	605	566
Pola	782	438	344
Puerto Galera	2,065	1,092	973
Roxas	2,111	1,110	1,001
San Teodoro	2,506	1,355	1,151
Socorro	1,222	646	576
Victoria	1,500	803	697
Oriental Mindoro	48,105	25,014	23,091

Source: Community Based Monitoring System Survey, 2008

Economic Profile

A. AGRICULTURE

1. Rice Area

City/Municipality	Irrigated Area (ha)	Rainfed Area (ha)	Total Rice Area (ha)
Baco	2,946.00	2,214.00	5,160.00
Bansud	5,647.00	549.00	6,196.00
Bongabong	8,636.50	2,431.50	11,068.00
Bulalacao	504.00	873.00	1,377.00
Calapan City	14,150.00	1,896.50	16,046.50
Gloria	5,119.50	252.50	5,372.00
Mansalay	3,142.00	1,850.00	4,992.00
Naujan	22,268.00	5,234.00	27,502.00
Pinamalayan	7,278.00	757.00	8,035.00
Pola	1,725.00	817.00	2,542.00
Puerto Galera	8.00	8.00	16.00
Roxas	5,165.00	167.00	5,332.00
San Teodoro	312.00	484.00	796.00
Socorro	3,412.00	802.00	4,214.00
Victoria	9,025.00	1,602.00	10,627.00
Total	89,338.00	19,937.50	109,275.50

Source: Provincial Agriculture Office, 2013

2. Irrigated Area by Type of Irrigation Facility by City/Municipality

City/Municipality	CIS (ha)		Pump/STW (ha)		TOTAL (ha)	
	Dry Season	Wet Season	Dry Season	Wet Season	Dry Season	Wet Season
Baco	233.00	402.00			233.00	402.00
Bansud	852.00	983.25			852.00	983.25
Bongabong	1,069.00	1,069.00			1,069.00	1,069.00
Bulalacao	112.00	112.00			112.00	112.00
Calapan City			50.76	50.76	50.76	50.76
Gloria	842.42	832.42			842.42	832.42
Mansalay	297.00	297.00			297.00	297.00
Naujan	100.00	42.37	438.72	438.72	538.72	481.09
Pinamalayan						
Pola			45.00	45.00	45.00	45.00
Roxas	80.00	80.00			80.00	80.00
Socorro	570.00	570.00			570.00	570.00
Victoria	217.00	217.00			217.00	217.00
Total	4,372.42	4,605.04	534.48	534.48	4,906.90	5,139.52

Notes: NIA-Assisted Irrigation Systems only; STW – Shallow Tube Well; CIS – Communal Irrigation System Source: National Irrigation Administration, 2013

3. Rice Production by Municipality

City/ Municipality	Farmers (No.)	Area Harvested (ha.)	Production (MT)	Average Yield (MT/ha]
Baco	3,604	5,160	20,259.59	3.92
Bansud	3,692	6,196	27,397.37	4.42
Bongabong	5,716	11,068	48,920.94	4.42
Bulalacao	1,394	1,377	5,538.28	4.02
Calapan City	6,651	16,047	69,554.53	4.33
Gloria	3,494	5,332	22,391.60	4.16
Mansalay	2,326	4,992	19,540.54	3.91
Naujan	11,392	27,502	110,530.81	4.01
Pinamalayan	4,828	8,035	38,953.72	4.84
Pola	1,460	2,542	12,302.74	4.83
Puerto Galera	22	16	59.00	3.68
Roxas	2,734	5,332	26,698.80	5.0
San Teodoro	408	796	2,881.50	3.61
Socorro	2,500	4,214	18,315.18	4.34
Victoria	4,972	10,627	41,160.85	3.87
Total	55,193	109,236	4,464,505.45	4.25

Source: Provincial Agriculture Office, 2013

4. Corn Production by Municipality

Municipality	Area Planted (ha)	Production (MT)	Average Yield (MT/ha)
Baco	54.25	49.0	1.31
Bansud	193.00	219.0	1.42
Bongabong	319.00	94.0	2.0
Bulalacao	468.00	1002.0	2.56
Gloria	127.50	213.5	1.68
Mansalay			
Naujan	132.50	114.5	3.77
Pinamalayan			
Puerto Galera	24.00	26.0	1.0
Victoria	53.00	159.0	3.18
Total	1,371.25	1,877.0	2.3

Source: Provincial Agriculture Office, 2013

Note: 415.0 hectares has not yet harvested/partial production

5. Vegetable Production

Commodity	Farmers Served	Area Harvested(ha)	Production (MT)	Average Yield (MT/ha)
Root Crops	358	274.22	452.67	3.32
Fruit Vegetables	3,377	711.55	5,537.30	10.19
Leafy Vegetables	875	97.95	227.78	2.84
Legumes	646	181.83	501.77	4.71
Papaya	163	18.8	94.3	5.54
Melon	8	3.00	21.00	7.00
Water Melon	46	31.41	300.00	15.00
Total	5,473	1,318.76	7,134.82	5.55

Source: Provincial Agriculture Office, 2013

6. Coconut Production by Municipality

City/ Municipality	Coconut Area (ha)	No. of Coco Farmers	No. of SCFOs	No. of Trees Planted		Estimated Nut Production (wholenuts-pcs)
				Bearing	Non-Bearing	
Baco	4,798	2,798	16	340,796	142,662	14,313,432
Bansud	1,697	516	6	89,191	26,304	4,459,550
Bongabong	7,437	2,567	12	346,937	192,161	15,265,228
Bulalacao	714	818	5	31,595	23,299	1,263,800
Calapan City	2,895	954	9	188,963	87,882	7,558,520
Gloria	4,529	3,359	14	440,457	47,275	18,499,194
Mansalay	981	826	5	52,254	17,810	2,090,160
Naujan	3,475	3,786	10	277,793	120,275	10,833,927
Pinamalayan	4,825	4,474	9	501,416	52,087	24,067,968
Pola	9,935	5,391	11	796,307	203,552	38,222,736
Puerto Galera	3,366	1,198	4	230,434	100,976	9,217,360
Roxas	1,258	1,024	8	78,647	22,184	3,145,880
San Teodoro	1,973	1,031	7	140,685	99,317	5,627,400
Socorro	2,454	1,399	10	275,737	26,672	12,959,639
Victoria	1,357	824	6	69,444	41,113	2,777,760
Total	51,694	30,965	132	3,860,656	1,203,569	170,302,554

Source: Philippine Coconut Authority, 2013

Note: SCFO - Small Coconut Farmers Organization

7. High Value Commercial Crops Production (HVCC)

Commodity	Farmers Served	No. of Trees Planted	Area Planted (ha)	Production (MT)	Average Yield (MT/ha)
Banana	12,399	8,679,408	24,600.96	209,108.07	8.49
Mango	3,748	238,204	1,526.40	686.80	4.50
Citrus	2,802	2,057,941	3,579.86	19,609,347	5.47
Rambutan	1,581	1,378,978	3,446.83	19,819.27	5.74
Lanzones	1,532	1,463,780	3,659.45	16,833.47	4.60
Durian	394	58,302	373.93	5,608.95	15.00
Papaya	155	16,920	14.10	282.00	20.00
Pineapple	21	10,000	10.00	30.00	3.00
Guyabano	15	7,700	7.70	63.87	8.29
TOTAL	22,647	13,911,233	37,219.23	19,861,779.43	8.34

Source: Provincial Agriculture Office, 2013

8. Top Five Fruit Production by Municipality

City/ Municipality	Production (MT)					
	Banana	Citrus	Rambutan	Lanzones	Mango	Total
Baco	1,296.50	207.57	130.00	111.00	113.50	1,858.57
Bansud	3,986.00	12.85	20.00	10.00	218.75	4,247.60
Bongabong	1,820.00	81.00	300.00	30.00	50.00	2,281.00
Bulalacao	3,287.51				253.90	3,541.41
Calapan City	708.50	347.22	12.13	11.50	8.99	1,088.34
Gloria	1,780.00	48.00	11.80	16.50	66.35	1,922.65
Mansalay	1,005.00	94.80	60.00	110.00	90.00	1,359.80
Naujan	2,260.00	446.34	527.60	210.50	47.75	3,492.19
Pinamalayan	2,407.49	54.00	112.64	49.80	34.44	2,658.37
Pola	2,688.00	799.20	88.00	59.50	10.59	3,645.29
Puerto Galera	93.50	2.50	1.50	0.80	17.80	116.10
Roxas	175.00	206.75	53.00	99.25	29.83	563.83
San Teodoro	507.00	48.75	2.50	45.00	8.00	611.25
Socorro	2,145.90	319.75	1,037.67	987.00	520.00	5,010.32
Victoria	440.00	884.13	1,090.00	1,919.00	570.00	4,903.13
Total	24,600.40	3,552.86	3,446.84	3,659.85	2,039.90	37,299.85

Source: Provincial Agriculture Office, 2013

9. Livestock Population by Municipality

City/ Municipality	Carabao	Cattle	Swine	Goat	Horse	Duck	Chicken
Baco	782	678	4,479	960	10	976	25,838
Bansud	1,615	2,774	13,339	3,695	227	1,202	31,235
Bongabong	1,687	4,816	7,013	7,668	28	15,697	95,443
Bulalacao	1,061	2,532	4,008	5,898	5	645	18,295
Calapan City	1,366	2,300	12,590	1,903	22	4,616	39,017
Gloria	1,651	2,608	6,861	1,353	42	1,407	29,841
Mansalay	1,231	1,469	10,115	10,260	144	7,442	35,143
Naujan	4,212	4,890	8,666	3,789	111	11,512	65,080
Pinamalayan	1,257	1,426	6,467	2,776	83	2,405	42,768
Pola	1,499	752	5,463	2,541	209	1,046	34,553
Puerto Galera	185	333	945	856	16	563	20,177
Roxas	2,020	2,031	12,134	4,213	38	10,133	43,289
San Teodoro	918	568	6,637	2,350	4	497	17,615
Socorro	533	800	7,541	1,092	70	2,428	13,621
Victoria	1,073	710	6,677	978	85	4,425	19,829
Total	21,090	28,687	112,935	50,332	1,094	64,994	531,744

Source: Office of the Provincial Veterinarian, 2013

10. Fishery Area Production and Income

Indicators	Area (ha)	Production (MT)	Income (Php)
Freshwater	168.2596		
* <i>Tilapia</i>		*336.3	30,267,000.00
Brackishwater	2,489.45		
* <i>Sugpo and Bangus Polyculture</i>			
Sugpo (30%)		*313.72	78,430,000.00
Bangus (70%)		*1,684.93	168,493,000.00
Fish cages/Fish Pen		6.9425	694,250.00
Municipal Fisheries	310,788.73	*8,007.23	800,723,000.00
Commercial Fisheries		*2,652.04	265,204,000.00
TOTAL		13,001.1625	1,343,811,250.00

Source: Provincial Agriculture Office, 2013 and *Bureau of Agricultural Statistics

Per capita fish consumption - 38 kg/yr (BFAR, 2007)

B. TOURISM

1. Tourist Establishments

City/ Municipality	No. of Establishment (Hotels/Resorts)	No. of Rooms	Bedding Capacity
Baco	3	34	88
Bansud	5	42	129
Bongabong	8	69	232
Bulalacao	4	22	95
Calapan City	28	449	1,310
Gloria	7	52	132
Mansalay	6	24	58
Naujan	8	55	339
Pinamalayan	12	126	312
Pola	6	14	38
PuertoGalera	154	2,598	6,952
Roxas	22	123	297
San Teodoro	3	23	68
Socorro	3	26	52
Victoria	6	31	90
TOTAL	275	3,688	10,192

Source: Provincial Tourism, Investment and Enterprise Development Office, 2013

2. Tourist Attractions

- ★ The Tamaraw
- ★ Mount Halcon
- ★ History and Culture
- ★ Industrial Tourism
- ★ Nature
- ★ Sport and Recreational Facilities
- ★ Health and Wellness
- ★ Other unspecified attractions

3. Tourist Sites and Destinations by Municipality

CITY/MUNICIPALITY	TOURIST SITES AND DESTINATIONS
Puerto Galera	The Cross and Canyons (Muelle Bay) Garita or Spanish Guardhouse Excavation Museum Baclayan and TalipananMangyan Settlements Paradise Zoo (Herpa World) Giant Clam Garden Hibiscus Garden Municipal Forest Park Ponderosa White Sand Beaches (19 beaches) Premier Dive Sites (36 dive sites) Waterfalls (4 waterfalls)

CITY/MUNICIPALITY	TOURIST SITES AND DESTINATIONS
Puerto Galera	Coral Garden at Long Beach Tabinay and Villaflor Hot Springs Python Cave Puerto Galera Bay Mt. Malasimbo The Black Rice at Muelle Marble Mine
San Teodoro	Punta Baluarte Spanish Fortress Saclag Settlement Farm School Saclag Ecological Waterfalls (13 waterfalls) Agsambalilo Tabunan Hot Spring Aras Cave TagongParaiso Subuan River Saclag Hanging Bridge Punta Beach Arigoy White Water Kayaking
Baco	Mount Halcon Rivers (4 rivers) Lantuyan and Bayanan Waterfalls CuevaSagrada TiboyBaras Rapids Gumahan San Andres (The Sunken Town/Old Settlement) Mangangan and Karayrayan Tunnels Nature's Park
Calapan City	Calapan Recreational and Zoological Park Bulusan-Suqui Eco Trail Pachoca-Balite and Lazareto, Suqui-Parang Beaches Caluangan Lake Islets (4 islets) Parang Coconut and Banana Plantations Sapul Orchard Casa Real Ruins Calapan City Hall Silonay Mangrove Conservation and Protection Area Kayak, Boardwalk Calapan Town Plaza
Naujan	Naujan Lake Pungao and Montelago Hot Springs Waterfalls (5 waterfalls)

CITY/MUNICIPALITY	TOURIST SITES AND DESTINATIONS
Naujan	Bancuro Church Ruins Baluarte (Bell Tower) Sta. Isabel Tree Farm MILAR Aquatic Farm Bancuro Butterfly Sanctuary Naujan Town Plaza
Victoria	Tongloy Mountain Lake Fruit Orchards Philippine Tree Farm, Inc. Polester and Butterfly Farms Gipit Picnic Grove Villa Bautista Resort Triple L Resort
Socorro	BatongDalig River La Fortuna Waterfalls Lake View Park Tree Farms Tyron Butterfly Breeding Farm Marl Insects and Butterfly Culture Branch
Pola	Tuntong Point Waterfalls (5 waterfalls) St. John the Baptist Shrine Misong Archaeological Site Old Houses Misong Mangrove Forest Aguada Beach
Pinamalayan	Rosario Cave Cawa-cawa Cave and Marayos Waterfalls MahabangBuhangin BaniladBayview Mts. Dumali, Beyer and Worcester Bongol Point Pili-Banilad-Ranzo Reefs Pinamalayan Theme Park Mangyan Shooting Range Rainbow Junction Parola at Pinamalayan Bay Magdalena Beach Resort Bulaklak Garden Resort Ranzo Stairway to Heaven Pinamalayan Airport Banilad Archaeological Site Tau BuhidMangyan Settlement Ranzo Lighthouse

CITY/MUNICIPALITY	TOURIST SITES AND DESTINATIONS
Gloria	WalangLangit Waterfalls Bulaklakan Tree Farm Mount Manguyang Camping Site
Bansud	Rosacara River Waterfalls (4 waterfalls) Bansud Museum Mangyan Settlements Bansud Municipal Park and Plaza
Bongabong	Caves (3 caves) Waterfalls (7 waterfalls) 17 th Century Kuta Shrine Ancestral House of Vicente Ilagan BatanganMangyan Community Botanical Park
Roxas	San Rafael Cave TaugaDiit River Happy Valley Mountain View Fish Sanctuary San Vicente Eco-Forest
Mansalay	MatangPugita and Lamak River/Waterfalls Palaypay Burial Ground and PalaypayDiit River LanaoSigong River Mansalay Bay BugtongBato Point Mangyan Virgin Cave Acacia Park and Mountain View Palace Buktot and Kasabangan White Sand Beaches Bait Mangyan Village in Brgy. Panaytayan Burial Cave in Balanga Mangyan Culture (settlement) Municipal Museum Wasig Airport Turtle Sanctuary Mansalay Eco Park Mansalay Municipal Port
Bulalacao	White sand islets and reefs (7 islands, 5 islets) Cabugao Waterfalls BagongSikat Falls Panangiran Peak Buyayao Peak Mt. Namalayan Colon Hill Lubok Sunken 17 th Century Sunken Church

Source: Provincial Tourism, Investment and Enterprise Development Office, 2013

4. Festivities by City/Municipality

City/ Municipality	Foundation Day	Date of Fiesta	Festival	
			Name	Date
Baco	January 25	March 19	Banana	January 25
Bansud	July 4	January 17-19	Basudani	January 19
Bongabong	December 7	March 19	Sulyog	March 19
Bulalacao	February 15	June 29	Biniray	June 29
Calapan City	March 21	January 1	Harvest/Kalap Festival	March 21
Gloria	October 1	February 14-15	Kawayanan	Sept. 29 – Oct. 1
Mansalay	July 24	November 25	MansalensesPalakaya	July 24
Naujan	January 4	September 10	DaBaLisTiHit	September 10
Pinamalayan	April 25	April 25	Bibingka	May 24
			Bahaghari	April 25
Pola	January 1	June 24	Bahaghari Centurion	Every Holy Week
			Sab'uyan&Bankathon	June 24
Puerto Galera	March 18	December 8	PolaMoriones	April
			KaaldawanIraya	October 12
Roxas	November 15	January 25	De Galera	May 10-12
			Sipag	July 28
San Teodoro	February 16	December 8	Adyawan Festival	December 8
Socorro	July 26-27	July 26-27	PakapyaAgtike	July 26
Victoria	September 18	October 14-15	Kapakyanan	September 18

Source: Provincial Tourism, Investment and Enterprise Development Office, 2013

C. COMMERCE AND INDUSTRY

1. Business Establishments by Type, Investments & Employment

Sectoral Classification	No. of Applications	Investments (PhP)	Employment
Agriculture	12	4,115,000.00	30
Manufacturing	84	6,269,668.00	239
Services	705	185,090,380.00	1,943
Tourism	5	42,700,000.00	34
Trading	789	103,763,999.50	1,471
Total	1,595	341,939,047.50	3,717

Source: Department of Trade and Industry, 2013

2. Automated Teller Machines (Calapan City):

1. Land Bank of the Philippines (LBP)
2. Development Bank of the Philippines (DBP)
3. Philippine National Bank (PNB)
4. United Coconut Planters Bank (UCPB)
5. First Allied Bank
6. MetroBank
7. Bank of the Philippine Islands (BPI)
8. China Bank
9. Banco de Oro (BDO)
10. Bank of Commerce
11. Rizal Commercial Banking Corporation (RCBC)
12. Max Bank
13. East West Unibank
14. Security Bank
15. Maybank
16. CARD Bank
17. First Consolidated Bank
18. Robinson's Bank

3. Number of Banks by City/Municipality

City/ Municipality	Banks
Baco	1
Bansud	2
Bongabong	3
Bulalacao	-
Calapan City	31
Gloria	4
Mansalay	1
Naujan	3
Pinamalayan	12
Pola	1
Puerto Galera	3
Roxas	5
San Teodoro	1
Socorro	3
Victoria	2
TOTAL	72

INFRASTRUCTURE AND UTILITIES

A. TRANSPORTATION

Facilities	Number
1. Roads (as of 2012)	
a. National Roads (KM)	313.499
▪ Concrete – 223.168kms; Gravel – 18.468kms; Asphalt – 71.863kms	
b. Provincial Roads (KM)	897.285
▪ Concrete – 384.4380kms; Gravel – 498.3961kms; Earth – 14.431km; Asphalt – 0.020km	
2. Bridges (number)	
a. National	93
b. Provincial	101
3. Land Transportation	
a. Registered vehicles	32,782
b. License issued	16,887
c. Total collection from fines on law enforcement (PhP)	Php3,020,805.00
4. Airports	
a. Existing airports (Calapan, Pinamalayan, Wasig)	3
b. Aircraft movements	
▪ Private/commercial aircraft landed (Calapan)	1,049
▪ Government including military craft	3
5. Sea Ports	
a. National ports (Calapan, Roxas)	2
b. Municipal ports(2 in Puerto Galera; 1 each in Calapan, Pinamalayan, Mansalay, Bulalacao, Bansudand Pola)	8
6. RO-RO vessels	31
7. Fast craft	3
8. Shipping company	4
9. Ship calls (Calapanonly)	12,910
10. Passengers (Calapan only)	
a. Disembarked	1,978,610
b. Embarked	1,682,818
11. Cargo (MT)	2,908.20
a. Inbound	74.13
b. Outbound	

Source: Land Transportation Office, Philippine Ports Authority, Civil Aviation Authority, Provincial Engineer's Office, Department of Public Works and Highways,2013

B. COMMUNICATION

1. Newspapers (Coverage-Or. Mindoro and Southern Tagalog)

- | | |
|------------------------|----------------------------|
| a. Island Sentinel | e. Mindoro Bulletin |
| b. Mahalta News Update | f. Mindoro Weekly Reporter |
| c. Island Observer | g. Halcon Star |
| d. Deretsahan News | h. Island Profiles |

2. Post Office - 15

3. Telegraphic Services

- | | |
|-------------------------------------|------|
| a. Telegraphic transfer office | - 4 |
| b. Office handling social telegraph | - 10 |

4. Wireless Service Providers

City/ Municipality	No. of cellsites		
	Smart Communications	Globe Telecom	Digitel (SunCellular)
Baco	1	1	1
Bansud	2	1	
Bongabong	1	1	
Bulalacao	1	1	
Calapan City	6	9	1
Gloria	2	1	
Mansalay	1	1	
Naujan	3	4	1
Pinamalayan	4	1	1
Pola	1	1	
Puerto Galera	3	5	
Roxas	2	3	
San Teodoro	1	1	
Socorro	1	2	
Victoria	2	2	1
TOTAL	31	34	6

5. Telephone Companies (landline)

- | | |
|-----------------------------------|---|
| a. Calapan Telephone System, Inc. | - Calapan City, Puerto Galera, Victoria, Socorro, Pinamalayan, Bongabong, Roxas |
| b. Globe Telecom | - Calapan City, Puerto Galera, Naujan, Victoria, Socorro, Pinamalayan, Bongabong, Roxas |

6. Internet Service Providers

- a. Calapan Telephone System, Inc. (CATSI) - *Calapan City, Pinamalayan, Bongabong*
- b. Dalcan Technologies - *Calapan City, Puerto Galera*
- c. Smart Communications - *Provincewide*
- d. Globe telecom - *Calapan City, Puerto Galera, Naujan, Victoria, Pinamalayan*
- e. TamarawVision Net, Inc. - *Calapan City*

7. Radio Stations and Cable TV Networks by Municipality

City/ Municipality	FM Radio Station	Cable Television Network	City/ Municipality	FM Radio Station	Cable Television Network
1st District			2nd District		
Baco	-	1	Pinamalayan	1	2
San Teodoro	-	1	Gloria	-	1
Puerto Galera	-	1	Bansud	-	1
Calapan City *	4	2	Bongabong	1	1
Naujan	1	1	Roxas	1	1
Victoria	1	1	Mansalay	-	1
Socorro	-	2	Bulalacao	-	1
Pola	-	1			
Total	6	10	Total	3	8

* with 1 AM Radio Station - DWIM 9.36kHz

8. Ratio of postal employees to total population

Province/ Municipality	Projected Population 2013	No. of Postal Employees	Ratio	Province/ Municipality	Projected Population 2013	No. of Postal Employees	Ratio
Baco	7,334	-		Pinamalayan	16,893	3	1:5,631
Bansud	7,879	1	1:7,879	Pola	6,660	-	1:6,660
Bongabong	13,770	1	1:13,770	Puerto Galera	7,321	2	1:3,661
Bulalacao	7,164	-		Roxas	10,553	2	1:5,277
Calapan City	26,046	12	1:2,171	San Teodoro	3,293	-	
Gloria	8,613	-		Socorro	7,741	1	1:7,741
Mansalay	11,251	1	1:11,251	Victoria	10,014	1	1:10,014
Naujan	19,588	1	1:19,588	Oriental Mindoro	163,958	25	1:6,558

Source: Philippine Postal Corporation, 2013

C. WATER

1. Level III Systems by City/Municipality

City/ Municipality	Water System
Calapan City	Calapan Waterworks System and Dev't Corporation
Baco	Pag-asa Water System
Bongabong	Bongabong Waterworks System, Formon Waterworks System, Labasan Waterworks System, San Isidro Waterworks System
Bulalacao	Campaasan Water System; Nasukob Water System; Milagrosa Water System
Gloria	Tambong Water System; Malamig Water System
Mansalay	Mansalay Water System
Naujan	Naujan Water District
Pinamalayan	Pinamalayan Water District
Pola	Pola Water District
Puerto Galera	Puerto Galera Water Works Office
Roxas	Roxas Water District; Cantil Waterworks Association
Socorro	Socorro Water System
Victoria	San Gabriel Water System

Source: Provincial Planning and Development Office, 2012

2. Population by Type of Water Facility and Urbanity

Type of Water Facility	Total	Urban	Rural
Community Water System - Owned	84,680	20,486	64,194
Community Water System – Shared	96,117	10,476	85,641
Deep well – owned	57,240	10,499	46,741
Deep well – shared	120,095	17,898	102,197
Artesian well – owned	52,150	5,560	46,590
Artesian well – shared	86,165	7,057	79,108
Dug/shallow well – owned	18,951	525	18,426
Dug /shallow well – shared	32,196	1,143	31,053
River, stream, lake, spring bodies of water	61,264	2,007	59,257
Bottled Water	4,792	1,883	2,909
Tanker Truck/Peddler	59,111	21,620	37,491
Other	3,433	356	3,077
Total	676,194	99,510	576,684

Source: Community Based Monitoring System Survey, 2008

3. Potential Water Sources

- a. Surface Water (rivers, streams, lakes) are available in the main river of Oriental Mindoro and in the vast Naujan Lake.
- b. Groundwater

4. Watershed Areas

- a. Baco-Bucayao Watershed (Baco, San Teodoro)
- b. Mag-AsawangTubig Watershed (Victoria)
- c. Pola Watershed (Socorro)
- d. Bongabong Watershed (Bongabong, Bansud, Mansalay&Roxas)
- e. Mayabig Community Watershed (Bayanan, Baco)
- f. Sabang Community Watershed (Sabang, Pinamalayan)
- g. Lancawan Community Watershed (Conrazon, Bansud)

D.POWER

1. Status of Electrification

City/ Municipality	Barangays			House Connections	Members Approved
	Covered	Energized	%		
Baco	27	27	100	6,615	6,012
Bansud	13	13	100	7,143	6,736
Bongabong	36	36	100	11,977	10,924
Bulalacao	15	15	100	3,511	3,509
Calapan City	62	62	100	39,222	28,651
Gloria	27	27	100	7,970	7,418
Mansalay	17	17	100	5,172	5,120
Naujan	70	70	100	21,072	19,025
Pinamalayan	37	37	100	17,441	15,286
Pola	23	23	100	6,324	6,841
Puerto Galera	13	13	100	8,554	5,776
Roxas	20	20	100	9,305	8,217
San Teodoro	8	8	100	3,401	2,896
Socorro	26	26	100	7,907	7,062
Victoria	32	32	100	10,789	9,174
TOTAL	426	426	100	166,403	142,647

2. Total Dependable Capacity - 38 MW

3. Maximum Power Demand - 33.522 MW

4. Present Sources of Power

Power Plant	Installed Capacity	Dependable Capacity	Location
1. NPC	11 MW	8 MW	Sta. Isabel, Calapan City
2. Power One Corp.	9 MW	7 MW	Sta. Isabel, Calapan City
3. ORMIN POWER	6.4 MW	5.6 MW	Sta. Isabel, Calapan City
4. LinaoCawayan Mini Hydro-Lower Cascade	2.1 MW	1.2 MW	Calangatan, San Teodoro
5. Mindoro Grid Corp. - Calapan	6.6 MW	5 MW	Sta. Isabel, Calapan City
6. Mindoro Grid Corp. - Bongabong	6.6 MW	5 MW	Labasan, Bongabong
7. Global Power	7.5 MW	5 MW	Papandayan, Pinamalayan
8. Dulangan Mini Hydro	1.6 MW	1.2 MW	Paitan, Naujan

5. Power Substations

Power Substations [ORMECO]	MVA RATING	Ownership
Calapan	30 MVA	NPC
Bansud	-	-
Pinamalayan	10 MVA	GBH
Naujan	5 MVA	ORMECO, Inc.
Roxas	5 MVA	ORMECO, Inc..
Socorro-Pola	5 MVA	ORMECO, Inc.
Puerto Galera	10 MVA	ORMECO, Inc.
Bongabong	5 MVA	ORMECO, Inc.

6. Breakdown of actual connections

a. Commercial	-	9,288
b. Residential	-	125,331
c. Industrial	-	131
d. Public Buildings	-	3,209
e. Street Lights	-	623
f. BAPA	-	2,118
TOTAL		140,700

Source: Oriental Mindoro Electric Cooperative, Inc., 2013

Social Development Profile

A. LABOR AND EMPLOYMENT

1. Comparative Labor Force Participation Rates, Employment and Unemployment Rates, MIMAROPA

Labor and Employment	2011	2012(1 st Q)	2013
Labor Force Participation Rate			
Employment Rate	95.1	95.9	96.0
Unemployment Rate	3.9	4.1	4.0
Underemployment Rate	21.6	22.7	23.1

2. Comparative Employment Status of Household Population 15 years old and over, MIMAROPA (in thousands)

Labor and Employment	2011	2012	2013 ^P
Total in the labor force	1,314	1,301	1,294
Total Employed	1,263	1,247	1,241
Total Unemployed	51	55	53

Note: Details may not add up to total due to rounding; P – Preliminary; Rates were computed based on rounded figures

Source: <http://bles.dole.gov.ph/PUBLICATIONS>

B. POVERTY AND INCOME

1. Municipal level small area estimates of poverty incidence, 2003 and 2009

Municipality	Poverty Incidence	
	2003	2009
Baco	51.72	44.5
Bansud	52.35	39.0
Bongabong	49.36	35.8
Bulalacao	74.70	51.5
Calapan City	17.84	23.0
Gloria	47.18	35.5
Mansalay	68.38	41.8
Naujan	39.09	38.4
Pinamalayan	36.53	31.7
Pola	55.63	37.9
Puerto Galera	25.64	23.9
Roxas	40.35	29.7
San Teodoro	49.31	33.6
Socorro	41.75	36.8
Victoria	32.20	35.2

Source: National Statistical Coordination Board–World Bank Estimation of Local Poverty in the Philippines

2. The 13+1 Dimensions of Poverty, Oriental Mindoro, 2008

Indicator	Households		Population					
	Magnitude	Proportion	Magnitude			Proportion		
			Total	Male	Female	Total	Male	Female
DEMOGRAPHY								
Population	153999		675838	343995	331843	100	50.9	49.1
Average household size	4							
Children 0-5 years old	68887	44.7	102321	52580	49741	15.1	15.3	15.0
Children 6-12 years old	73955	48	127242	65217	62025	18.8	19.0	18.7
Members 13-16 years old	50518	32.8	68955	35821	33134	10.2	10.4	10.0
Members 6-16 years old	90952	59.1	196197	101038	95159	29.0	29.4	28.7
Members 10 years old and above	153885	99.9	501153	254460	246693	74.2	74.0	74.3
Members of the labor force	136651	88.7	204053	142060	61993	30.2	41.3	18.7
HEALTH AND NUTRITION								
children 0-5 year old who died	534	0.8	559	294	265	0.5	0.6	0.5
women who died due to pregnancy related-causes	38	0.2	39			0.2		
malnourished children 0-5 year old	5435	7.9	7032	3591	3441	6.9	6.8	6.9
HOUSING								
households living in makeshift housing	6504	4.2	28470	14882	13588	4.2	4.3	4.1
households who are squatters	4577	3	20176	10403	9773	3.0	3.0	2.9
WATER AND SANITATION								
households without access to safe water	39956	25.9	175117	89298	85819	25.9	26.0	25.9
households without access to sanitary toilet facility	35181	22.8	155752	81235	74517	23.0	23.6	22.5
BASIC EDUCATION								
children 6-12 years old not attending elementary	25001	33.8	29762	15727	14035	29.5	8.0	14.7
children 13-16 years old not attending high school	22411	44.4	26844	15766	11078	38.9	44.0	33.4
children 6-16 years old not attending school	21416	23.5	29287	17127	12160	14.9	17.0	12.8
INCOME AND LIVELIHOOD								
households with income below poverty threshold	95163	61.8	460250	237061	223189	68.1	68.9	67.3
households with income below food threshold	71700	46.6	358982	185356	173626	53.1	53.9	52.3
households experienced food shortage	13321	8.7	64750	33638	31112	9.6	9.8	9.4
Unemployed members of the labor force	3326	2.4	3869	2289	1580	1.9	1.6	2.5
PEACE AND ORDER								
Victims of crime	2149	1.4	4507	2583	1924	0.7	0.8	0.6

Source: CBMS Survey, 2008

3. Annual per Capita Poverty Threshold, Poverty Incidence, Magnitude of Poor Families and Population by Province, MIMAROPA

Region/ Province	Annual Per Capita Poverty Threshold (in Pesos)			Poverty Incidence among Families (%)			Magnitude of Poor Families Estimate		
	2006	2009	2012	2006	2009	2012	2006	2009	2012
PHILIPPINES	13,357	16,871	18,935	21	20.5	19.7	3,809,283	4,036,915	4,214,921
Region IV-B	12,645	15,613	17,292	32.4	27.2	23.6	176,282	160,226	150,486
Marinduque	12,909	15,678	17,180	31.9	27.4	23.9	15,481	13,971	12,743
Occidental Mindoro	12,725	15,937	17,412	33.5	25	29.8	30,084	24,203	31,070
Oriental Mindoro	13,396	16,710	17,415	35.7	28.8	21.5	56,043	48,741	39,272
Palawan	11,521	14,418	16,696	28.2	25.3	20.5	53,193	53,131	47,730
Romblon	12,811	15,547	18,464	36.3	32.6	30.4	21,481	20,181	19,671

Source: National Statistical Coordination Board, December 2013

4. Annual per Capita Food Threshold, Subsistence Incidence, Magnitude of Poor Families and Population by Province, MIMAROPA – 2012 First Semester

Region/Province	Annual Per Capita Food Threshold (PhP)	Subsistence Incidence (%)	
		Families	Population
Region IV - B	5,933	15.8	14.0
Occidental Mindoro*	5,899	20.1	24.3
Oriental Mindoro*	6,013	34.0	28.3
Marinduque*	5,942	43.7	44.2
Romblon	6,458	21.3	18.5
Palawan*	5,706	30.9	27.7

*Coefficient of Variation (CV) of 2009 subsistence incidence is greater than 20%

Source: National Statistical Coordination Board, 2012

5. Average Family Income , Expenditures and Savings of Families, MIMAROPA: 2012

Income	-	PhP177,000
Expenditures	-	134,000
Savings	-	43,000

Source: National Statistics Office, 2012 Family Income and Expenditure Survey

C. HEALTH

1. Number and Rate of Births, Total Deaths, Infant and Maternal Deaths

INDICATORS	2011		2012		2013	
	No.	Rate	No.	Rate	No.	Rate
Births	16,610	19.7	17,166	19.9	17,042	20.7
Total Deaths	3,032	3,032	3,360	3.91	2,892	3.5
Infant Deaths	137	137	143	8.3	121	7.1
Maternal Deaths	6	0.36	5	0.29	4	0.23

Source: Annual 2013 Field Health Service Information System

2. Access to Health Services

INDICATORS	2011	2012	2013
Proportion of children 0-5 years old who are below normal weight for their age	9.6	8.9	8.9
Proportion of children 0-5 years old who died of illness	0.13	0.40	0.11
Proportion of women who died due to pregnancy	0.36	0.29	0.23
Proportion of births attended by skilled health personnel			
a. MD/PHN/Midwives	66.62	73.27	78.92
b. Hilot/Trained Birth Attendants	31.39	25.30	19.97
c. Others	1.98	1.43	1.14

3. Morbidity: Leading Causes, Number and Rate per 100,000 Population Five Year Average (2008-2012), 2013

CAUSES	2013		5 Yr. Average	
	No.	Ratio	No.	Ratio
1. AURI	27,461	3349	19,773	2411
2. Hypertension	4,388	535	2051	250
3. UTI	3,276	399	2,521	250
4. Pneumonia	3,139	383	2,299	280
5. Wound All Forms	2,132	260	1,586	193
6. Influenza	2,082	254	1,782	217
7. PTB	1,841	224	1,856	226
8. Bronchitis	1,535	187	2,963	361
9. Skin Diseases	1,262	154	1,814	221
10. Diarrhea	927	113	1,667	203

4. Infant Morbidity: Leading Causes, Number and Rate per 100,000 Population Five Year Average (2008-2012), 2013

CAUSES	2013		5 Yr. Average	
	No.	Ratio	No.	Ratio
1. AURIA	981	119.62	2,373	289.37
2. Pneumonia	858	104.63	352	42.92
3. Influenza	655	79.87	175	21.34
4. Bronchitis	316	38.53	439	53.53
5. Skin Diseases	189	23.05	83	10.12
6. Cough	155	18.90	0	0.00
7. Diarrhea	151	18.41	271	33.05
8. Fever	58	7.07	0	0.00
9. Viral Infection	43	5.24	170	20.73
10. Malnutrition	17	2.07	50	6.10

Source: Provincial Health Office, 2013 Annual Report

5. Mortality: Leading Causes, Number and Rate per 100,000 Population Five Year Average (2008-2012), 2013

CAUSES	2013		5 Yr. Average	
	No.	Ratio	No.	Ratio
1. Diseases of the Heart	959	117	363	44
2. Senility	279	34	123	15
3. Cancer All Forms	265	32	233	28
4. Pneumonia	261	32	192	23
5. Hypertension	184	22	163	20
6. Accident All Forms	117	14	63	8
7. COPD (Chronic Obstructive Pulmonary Disease)	91	11	131	16
8. Diabetic Mellitus	73	9	72	9
9. PTB	72	9	116	14
10. Unknown	50	6	0	0

Source: Provincial Health Office, 2013 Annual Report

6. Infant Mortality per 100,000 Population Five Year Average (2008-2012), 2013

CAUSES	2013		5 Yr. Average	
	No.	Rate	No.	Rate
1. Prematurity	24	1.41	12	0.70
2. Septicemia	19	1.11	16	0.94
3. Pneumonia	11	0.65	22	1.29
4. Unknown	9	0.53	5	0.29
5. Congenital Heart Diseases	6	0.35	6	0.35
6. Acute Respiratory Distress Syndrome	6	0.35	5	0.29
7. Seizure Disorder	4	0.23	2	0.12
8. Acute Gastroenteritis	4	0.23	2	0.12
9. Sudden Infant Death syndrome	3	0.18	2	0.12
10. Asphyxia	2	0.12	6	0.35

Source: Provincial Health Office, 2013 Annual Report

7. Nutritional Status

Age Group (months)	Number of Preschoolers Weighed by Nutritional Status and Sex											
	Normal			Underweight			Severely Underweight			Overweight		
	Boys	Girls	Total	Boys	Girls	Total	Boys	Girls	Total	Boys	Girls	Total
0-5	3,682	3,881	7,563	122	81	203	31	27	58	83	72	155
6-11	4,347	4,237	8,584	219	179	398	79	51	130	43	27	70
12-23	8,284	8,027	16,311	682	580	1,262	167	142	309	64	62	126
24-35	8,817	8,148	16,965	782	661	1,443	197	181	378	54	34	88
36-47	8,749	8,334	17,083	716	763	1,479	156	167	323	59	61	120
48-59	8,857	8,476	17,333	759	775	1,534	155	173	328	49	35	84
60-71	8,341	7,798	16,139	912	831	1,743	177	156	333	46	30	76
Total	51,077	48,901	99,978	4,192	3,870	8,062	962	897	1,859	398	321	719
% Weighed			90.4			7.3			1.68			.65

Source: Provincial Health Office, 2013 Annual Report

8. Health Facilities and Personnel

Facilities	Number	Practitioners (government)	Number
Private Hospitals	19	Physicians	20
Government Owned Hospitals	8	Nurses	25
Private Clinics	46	Nutritionist	1
Rural Health Units	17	Medical Technologist	10
City Health Office	1	Dental Aides	-
Barangay Health Station	224	Non-Technical	34
Malaria Control Service	1	Dentists	12
Schistosomiasis Control Team Office	1	Midwives	136
Botikasa Barangay	356	Engineers/Sanitary Inspectors	19
Botikang Lalawigan	1	Active BHWs	3,761
Botikang Bayan	1		

Source: Provincial Health Office, 2013 Annual Report

D. EDUCATION

1. Facilities(SY2012-2013)

Facilities	Province	Calapan City
Educational Districts	18	3
Public Elementary Schools	419	49
National High Schools	79	8
Private Elementary Schools	49	13
Private Secondary Schools	35	4
Public Pre- Elementary Schools	408	48
Private Pre-Elementary Schools	53	16
Gov't Owned Tertiary (Vocational/Technical and Colleges)	2	1

2. Enrollment in Government and Private Schools By Level of Education (Prov'l and City)

Educational Level	2013-2014	
	Public	Private
Pre-Elementary	18,835	1,697
Elementary	126,335	6,106
Secondary	54,710	11,378

3. Performance Indicators in Public Elementary and Secondary Schools, 2012-2013

Performance Indicators	Province		Calapan City	
	Public Elementary Schools	Public Secondary Schools	Public Elementary Schools	Public Secondary Schools
Participation Rate	84.13	57.73	83.17	68.77
Cohort Survival Rate	76.2	80.27	90.28	86.55
School Leavers Rate	5.75	7.23	1.75	5.09
Graduation Rate	98.18	97.45	98.62	94.41
Completion Rate	74.79	77.7	89.24	82.64

Source: Department of Education (Provincial & City Division)

E. SOCIAL WELFARE SERVICES

City/Municipality	No. of Social Worker	No. of Day Care Worker	No. of Day Care Centers	No. of Children Served	No. of Registered Senior Citizens
Baco	3	31	31	930	2,568
Bansud	1	46	46	1,216	1,821
Bongabong	2	33	33	1,315	2,991
Bulalacao	1	45	45	1,055	1,515
Calapan City	6	70	70	2,692	10,270
Gloria	2	33	33	1,714	2,288
Mansalay	0	47	47	1,420	1,600
Naujan	2	80	81	2,882	3,935
Pinamalayan	1	58	58	2,070	4,808
Pola	1	31	31	1,242	2,333
Puerto Galera	2	17	18	709	1,425
Roxas	2	46	46	2,261	2,077
San Teodoro	2	11	12	375	571
Socorro	0	40	40	1,548	2,088
Victoria	1	36	36	890	275
PGOM-PSWDO	8	2	1	375	
Oriental Mindoro	34	626	628	22,376	40,565

Source: Provincial Social Welfare and Development Office, 2013

F. PROTECTIVE SERVICES

1. Crime Statistics and Protective Facilities (January 2013 to January 2014)

	No.		No.
a. Crime Statistics		c. Crime Against Property	
Crime Volume	4,296	Robbery	162
Crime Solved	1,463	Theft	503
Crime Unsolved	2,833		
Crime Solution Efficiency	34.05	d. Facilities	
Ave. Monthly Crime Rate (AMCR)	45.57	Building	28
		Serviceable Vehicles	
b. Crime Against Person		▪ Truck	1
Murder	97	▪ Patrol Jeep	23
Homicide	58	▪ Patrol Cars	2
Physical Injuries	1,120	▪ Motorcycles	5
Rape	77	Speed Boat	1

Source: Philippine National Police, 2013

2. Fire Prevention

City/Municipality	No. of Fire Stations	No. of Fire Trucks			No. Office Personnel
		BFP	LGU	NGO	
OPFM*		1			10
Baco	0	0			1
Bansud	1	1			7
Bongabong	1	1			8
Bulalacao	0	0			1
Calapan City	1	2		2	13
Gloria	1	1			8
Mansalay	0	0			1
Naujan	1	1	1		9
Pinamalayan	1	1	1		11
Pola	1	1			5
Puerto Galera	0	0			3
Roxas	1	1			8
San Teodoro	0	0			1
Socorro	0	0			2
Victoria	1	1			7
TOTAL	9	11	2	2	95

* OPFM - Office of the Provincial Fire Marshal

Source: Bureau of Fire Protection, 2013

Financial Profile

A. INCOME CLASSIFICATION OF CITY/MUNICIPALITY

City/Municipality	Class
Oriental Mindoro	1 st
Baco	3 rd
Bansud	2 nd
Bongabong	1 st
Bulalacao	3 rd
Calapan City	3 rd Class City
Gloria	3 rd
Mansalay	2 nd
Naujan	1 st
Pinamalayan	1 st
Pola	3 rd
Puerto Galera	1 st
Roxas	2 nd
San Teodoro	4 th
Socorro	3 rd
Victoria	2 nd

Source: Provincial Treasurer's Office, 2013

B. ANNUAL INCOME AND BUDGET PER CITY/ MUNICIPALITY

City/ Municipality	Income [in Php]	Budget [in Php]
Baco	73,948,419.00	75,088,588.97
Bansud	86,432,269.42	88,929,000.00
Bongabong	140,150,152.99	162,881,236.60
Bulalacao	81,351,442.79	79,780,426.86
Calapan City	466,987,589.65	459,499,776.87
Gloria	83,757,069.17	85,146,068.72
Mansalay	109,845,639.20	112,476,729.97
Naujan	164,379,639.89	175,013,121.00
Pinamalayan	144,526,311.08	157,829,578.50
Pola	66,093,998.12	70,575,911.38
Puerto Galera	90,085,687.91	110,678,473.00
Roxas	90,464,001.75	89,390,832.00
San Teodoro	69,295,907.90	67,478,241.15
Socorro	75,091,722.37	78,881,889.09
Victoria	89,459,614.09	93,054,627.18
Total	1,831,869,465.33	1,906,704,501.29

Sources: Provincial Treasurer's Office, Provincial Budget Office, City Budget Office, 2013

C. INCOME AND EXPENDITURES, PROVINCIAL GOVERNMENT OF ORIENTAL MINDORO

ITEM	AMOUNT (PhP)
Income and Expenditures	
Income [General & Special Educ. Fund]	1,005,043,733.32
Expenditures/Obligations	861,742,272.27
Total Revenues by Source	
Tax Revenue/Special Education Tax	43,330,680.57
Permit and Licenses	1,083,460.00
Service Income	38,395,715.72
Business Income	26,763,965.48
Other Income (Interest Income, IRA, Misc. Income)	*842,911,675.09
Income from Grants and Donations	52,558,236.46
Total Expenditures by Object	
Personal Services	371,042,615.33
MOOE	372,633,610.91
Capital Outlays	118,066,046.03

Source: *Provincial Treasurer's Office, 2013*
Office of the Provincial Accountant, 2013
Provincial Budget Office, 2013

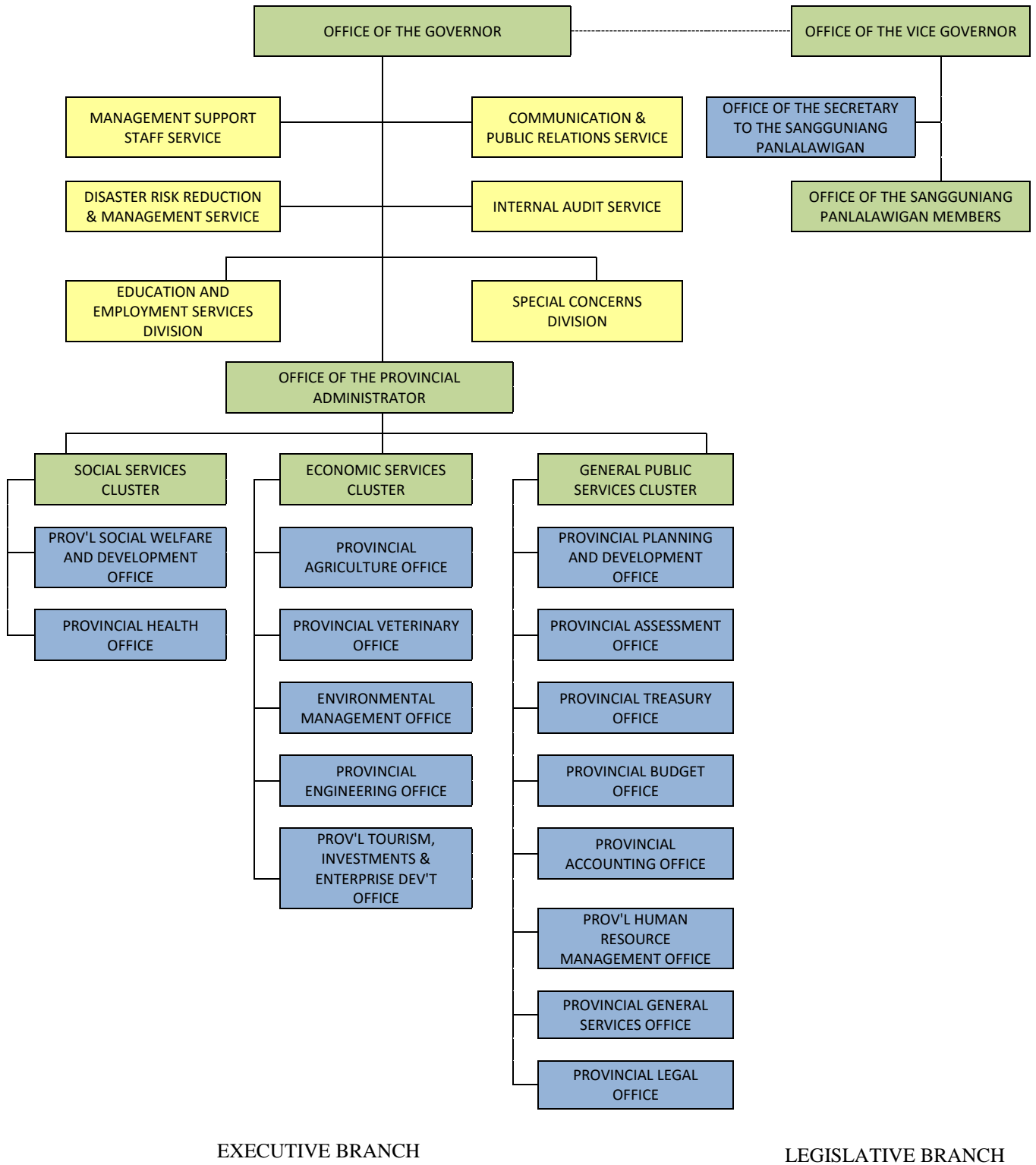
*Note: *Other Income as of December 31, 2013* *Php 842,911,675.09*

Less: Adjustment made as per notice of funding check issued received

By OPA on January 15, 2014	<u>(732,266.00)</u>
Adjusted Other Income as of Jan. 2014	842,179,409.09
Adjusted Total Income GF & SEF Jan 2014	PhP1,004,311,467.32

Institutional Profile

A. ORGANIZATIONAL CHART OF THE PROVINCIAL GOVERNMENT OF ORIENTAL MINDORO



B. PROVINCIAL GOVERNMENT PERSONNEL BY OFFICE (as of December 31, 2013)

Name of Office		No. of Plantilla Positions	No. of Filled-up Positions
1	Provincial Governor's Office	1	1
	Management Support Staff Division	14	12
	Internal Audit Service Division	8	8
	Special Concerns Division	9	9
	Disaster Risk Reduction and Management Division	6	4
	Communication and Public Relations Division	12	9
	Education and Employment Services Division	5	5
2	Office of the Vice-Governor & Sangguniang Panlalawigan	42	37
3	Provincial Administrator's Office	24	18
4	Provincial Planning & Development Office	35	24
5	Provincial Treasurer's Office	38	26
6	Provincial Accountant's Office	25	21
7	Provincial Budget Office	17	8
8	Provincial Assessor's Office	39	29
9	Provincial Human Resource Management Office	18	16
10	Provincial General Services Office	42	33
11	Provincial Legal Office	9	7
12	Provincial Social Welfare & Development Office	19	15
13	Provincial Health Office		
	Technical Services	38	30
	Oriental Mindoro Provincial Hospital	167	132
	Oriental Mindoro Central District Hospital	20	16
	Naujan Community Hospital	23	20
	Bulalacao Community Hospital	20	18
	Oriental Mindoro Southern District Hospital	66	52
14	Provincial Engineer's Office	130	108
15	Provincial Agriculturist's Office	63	49
16	Office of the Provincial Veterinarian	19	17
17	Environment & Natural Resources Office	26	21
18	Provincial Tourism, Investment and Enterprise Development Office	17	9
	Total	952	754

Source: Provincial Human Resource Management Office, 2013

