

ORIENTAL MINDORO FACTS AND FIGURES 2014

TABLE OF CONTENTS

	Page
General Information	1
Administrative Map	2
Land and Other Natural Resources	3
a. Land Area by City/Municipality	3
b. Land Classification Statistics	3
c. Geographical Zone Surfaces	3
d. Mineral Resources	4
e. Forest Cover	4
f. Coastal Resources	5
Demography	8
a. Population Size by City/Municipality by Census Years	8
b. Actual and Projected Population and Number of Households, Growth Rate by Municipality	9
c. Life Expectancy	9
d. Projected Population by Province, MIMAROPA	10
e. Urban-Rural Population	10
f. Population Density	11
g. Mangyan Tribes by Municipality	11
h. Mangyan Population by Sex	12
Economic Profile	13
a. Agriculture	13
b. Tourism	18
c. Commerce and Industry	22
Infrastructure and Utilities	24
a. Transportation	24
b. Communication	25
c. Water	27
d. Power	28

Social Development Profile	30
a. Labor and Employment	30
b. Poverty and Income	31
c. Poverty Maps	
d. Health	33
e. Education	36
f. Social Welfare Services	37
g. Protective Services	37
Financial Profile	39
a. Income Classification of City/Municipality	39
b. Annual Income and Budget Per City/Municipality	39
c. Income and Expenditure, Provincial Government of Oriental Mindoro	40
Institutional Profile	41
a. Organizational Chart of the Provincial Government of Oriental Mindoro	41
b. Provincial Government Plantilla and Filled-up Position by Office	42

General Information

A. LOCATION

Oriental Mindoro is located in Region IV-B, otherwise known as the MIMAROPA Region. It lies 45 kilometers south of Batangas and 130 kilometers south of Manila.

B. BOUNDARY

It is bounded by Verde Island Passage on the north; Maestro del Campo Island and Tablas Strait on the East; Semirara Island on the South; and Occidental Mindoro on the West.

B. TOPOGRAPHY

Oriental Mindoro has a rugged terrain and an irregular coastline. Numerous rivers and streams traverse the province but none are navigable by large vessels.

C. CLIMATE

The province has two climate types: Type I and Type III. Type I is characterized by two pronounced seasons, dry and wet. Type III has no pronounced season, relatively dry from November to April and wet during the rest of the year.

D. LAND AREA

Oriental Mindoro has a total land area of 4,364.72 square kilometers or 436,472 hectares. It represents 1.5 % of the total land area of the country and 16% of the MIMAROPA Region.

F. LEGAL BASIS: RA 505 (Division of Mindoro)

G. DATE OF APPROVAL: November 15, 1950

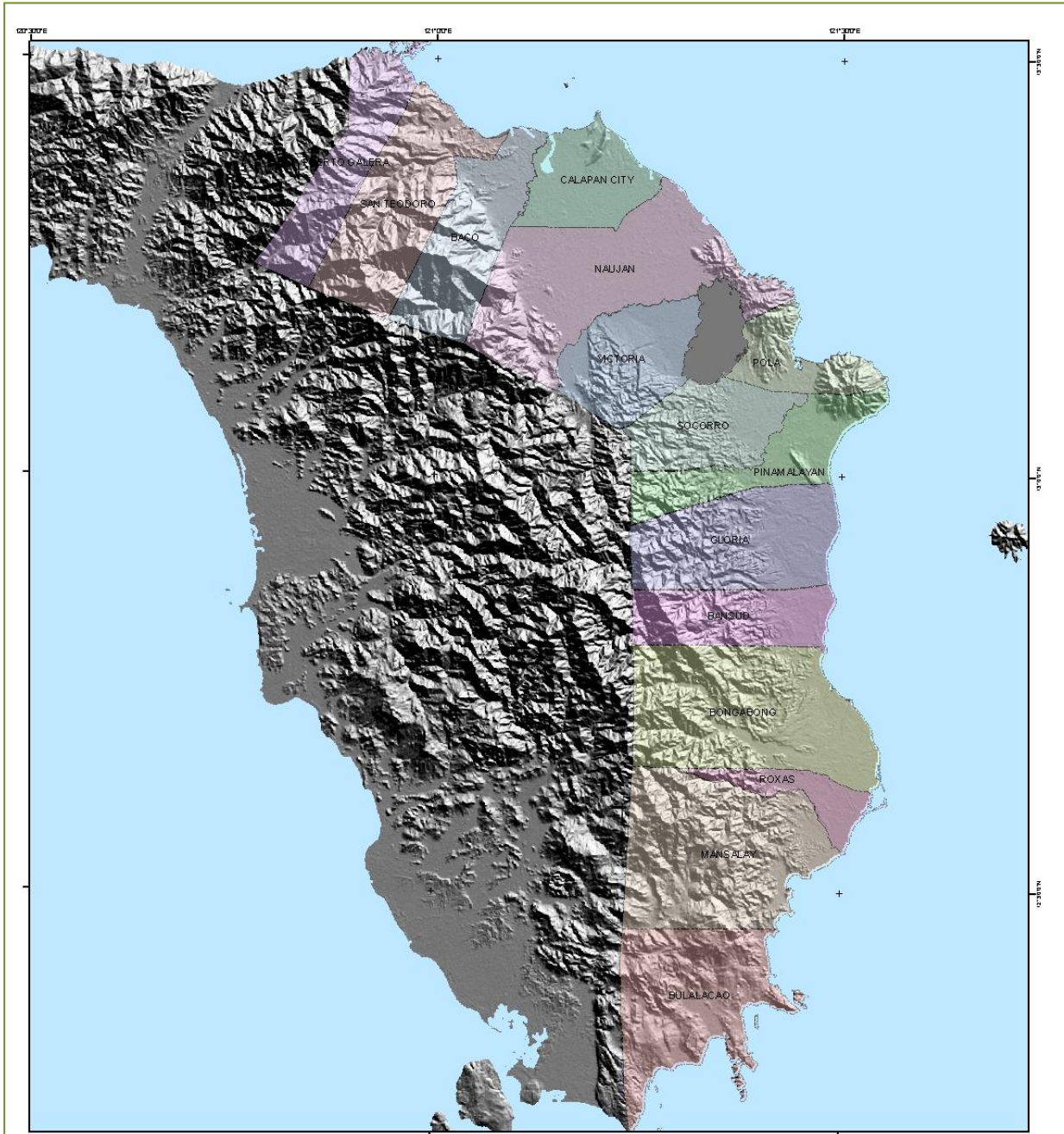
H. CONGRESSIONAL DISTRICTS: two

I. NUMBER OF COMPONENT CITY: one

J. NUMBER OF MUNICIPALITIES: 14

K. NUMBER OF BARANGAYS: 426

L. CAPITAL: Calapan City



ADMINISTRATIVE MAP

- Legend**
- | | |
|--|--|
| | |
| | |
| | |
| | |
| | |
| | |
| | |
| | |

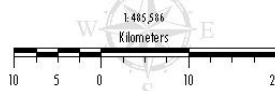
Technical Notes:
Boundaries are not authoritative.

Map prepared by:

Provincial Planning and Development Office - Provincial Government of Oriental Mindoro in coordination with the National Economic and Development Authority Region 4B (NED-4B) under the Integrating Disaster Risk Reduction and Climate Change Adaptation (IMRCCA) to Local Development and Decision-making Processes Project



PROVINCE OF ORIENTAL MINDORO
REGION 4B - MIMAROPA



SPHEROID: CLARKE 1866
PROJECTION: UNIVERSAL TRANSVERSE MERCATOR
MERIDIAN DATUM: MANILA MERIDIAN
HORIZONTAL DATUM: LUCSON DATUM



Map Sources:

Administrative Boundaries, National Roads, Rivers and Spot Elevation, NAIP/20 Topographic Map 1:250,000 scale

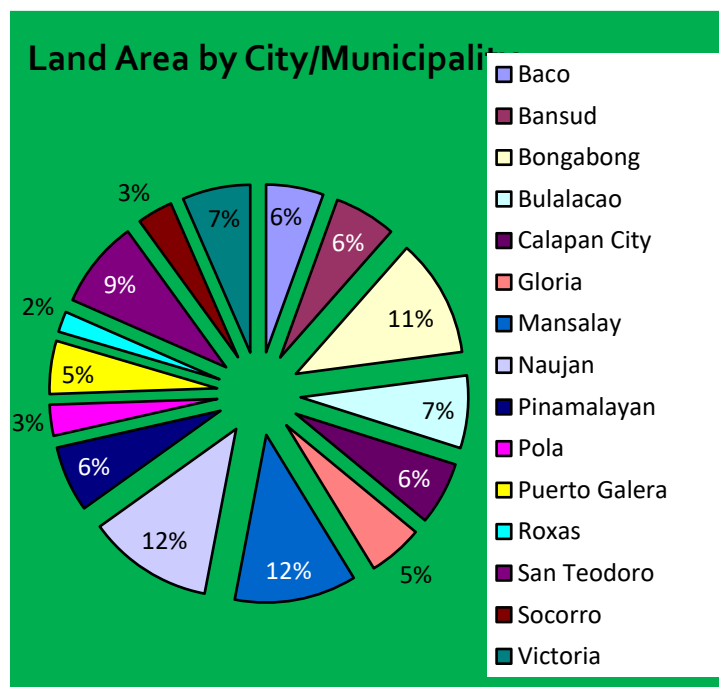
Janis & H.J. Benter & Nelson, F. Giverson, 2000, Hole-filled seamless SRTM30plus, International Centre for Tropical Agriculture (CIAT), available from <http://srm.cgiar.org>

Provincial Planning and Development Office (PPDO) Project, 2011

Land and other Natural Resources

A. LAND AREA BY CITY/MUNICIPALITY

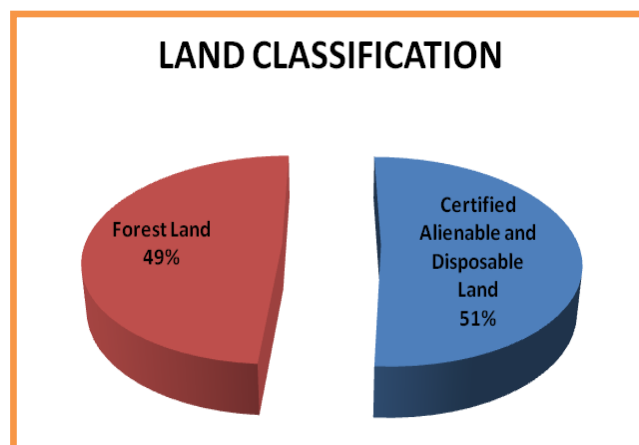
Municipality	Land Area (sqkm)	% to Total
Baco	241.70	5.54
Bansud	260.00	5.96
Bongabong	498.20	11.41
Bulalacao	305.12	6.99
Calapan City	265.20	6.08
Gloria	230.80	5.29
Mansalay	513.10	11.76
Naujan	528.00	12.10
Pinamalayan	277.30	6.35
Pola	130.20	2.98
Puerto Galera	223.50	5.12
Roxas	87.10	1.99
San Teodoro	369.10	8.46
Socorro	149.40	3.42
Victoria	286.00	6.55
TOTAL	4,364.72	100.00



B. LAND CLASSIFICATION STATISTICS

		Area in Hectares
Certified Alienable and Disposable Land		222,895
Forest Land		213,577
Unclassified	148	
Classified	213,429	
Total		436,472

Source: Phil. Forestry Statistics, 2012



C. GEOGRAPHICAL ZONE SURFACES

☛ Coastal Areas	342.45 km
☛ Lake Areas	81.28 sqkm
☛ Riparian areas, rich fertile valleys and mountainous areas	89% of its total land mass

D. MINERAL RESOURCES

1. Location of Metallic Mineral Resources and its location

Mineral Commodity	Location
Gold	Baco (Dulangan and Binaybay), Puerto Galera
Copper	Naujan (San Andres), Socorro, Bongabong (Acliang and Pajo)
Chromite	Gloria (Banus 1 & 2), Bansud
Nickel	Bansud, Bongabong, Victoria
Iron	Baco (Binaybay), Puerto Galera (Balatero)
Marble	San Teodoro

Source: Mines & Geosciences Bureau, 2011 and Environment & Natural Resources Office, 2011

2. Non-Metallic Minerals (Gravel and Sand), Volume and Total Value

City/Municipality	Total [cu.m.]	Total Value (Php)	City/Municipality	Total [cu.m.]	Total Value (Php)
First District			Second District		
Baco	23,000	403,160.00	Gloria	27,500	378,962.50
Calapan City	34,500	432,690.00	Bongabong	140,500	2,266,724.00
Naujan	291,270	3,830,593.60	Roxas	8,250	110,177.50
Victoria	37,500	560,787.50	Mansalay	8,250	114,240.00
Socorro	8,000	100,782.00	Bulalacao		
			Pinamalayan	19,500	254,705.00
Total	394,270	5,328,013.10	Total	204,000	3,124,809.00

Source: Environment and Natural Resources Office, 2014

E. FOREST COVER

Forest cover of MIMAROPA in hectares by Province

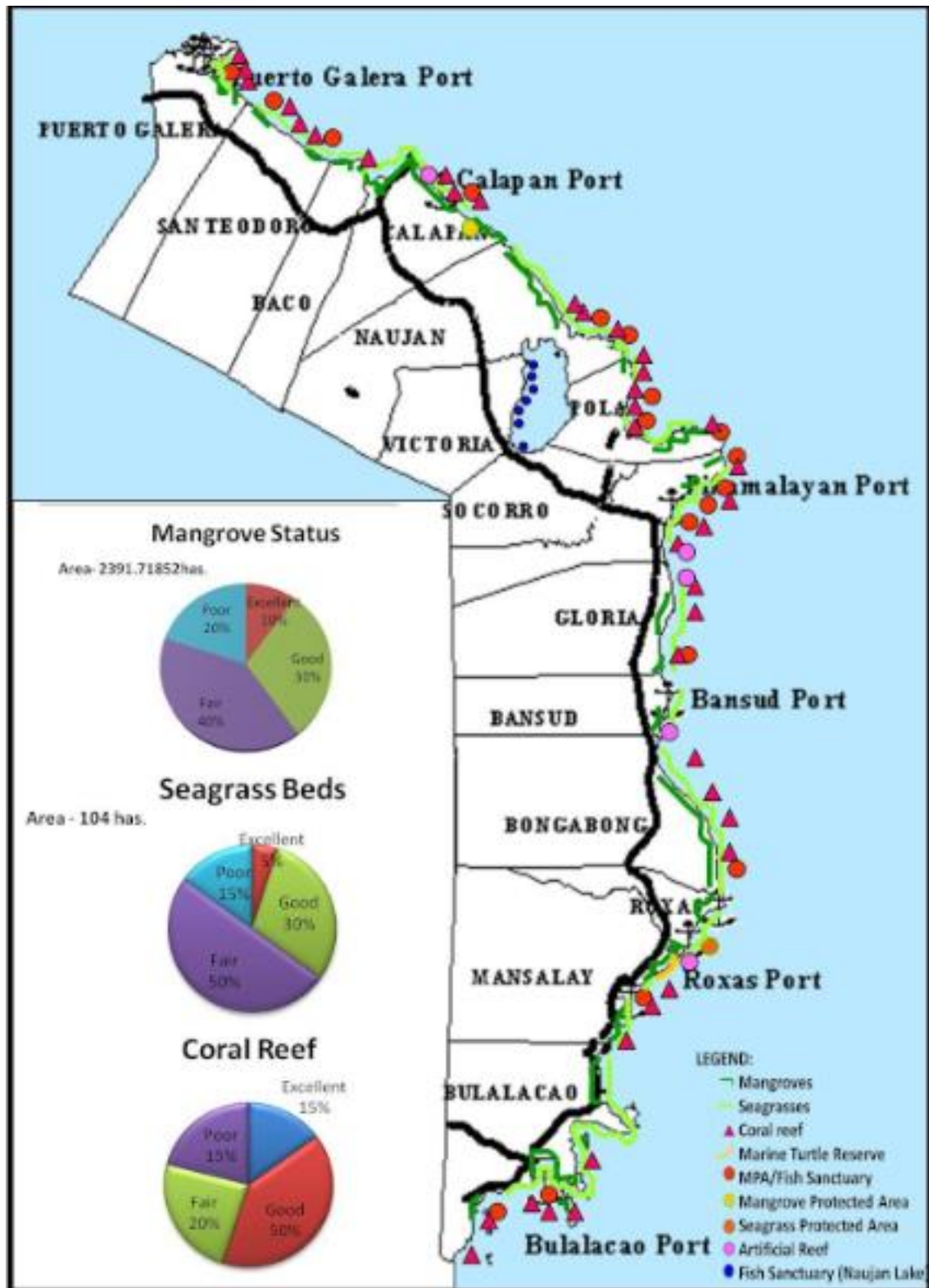
PROVINCE	CLOSED FOREST	OPEN FOREST	MANGROVE	TOTAL FOREST
Marinduque	0	12,255	2,877	15,132
Occidental Mindoro	1,968	101,424	1,594	104,986
Oriental Mindoro	5,301	77,731	3,949	86,981
Palawan	86,877	541,590	63,821	692,288
Romblon	3,664	11,529	1,084	16,277
MIMAROPA	97,810	744,530	73,324	915,664

Source: <http://forestry.denr.gov.ph/landuse4b.htm>

As of December 31, 2010

F. COASTAL RESOURCES

1. Coastal Resources Map of Oriental Mindoro



2. Major Fish Species Commonly Caught

- Tanigue, tambakol, malasugi, mamsa, lapu-lapu, galunggong, tuna, herrings, hasa-hasa, kalapato, caranx, dalagang-bukid, alumahan, bisugo, samaral, anchovies, sardines

3. Minor Non- Fish Species other than Fish

- Squid, shrimp, prawn, octopus, mudcrab, shells, lobster, cuttlefish, mussel, oyster, blue crabs, seaweed, sea cucumber

4. Established Marine Protected Areas

Location/ Municipality	Barangay	Name of MPA	Area (has.)	Year Established
Calapan City	Lazareto	HarkaPiloto Fringing Reef Fish Sanctuary	37.44	2003
	Silonay	Silonay Mangrove Conservation Area	41.00	2010
San Teodoro	Ilag	Punta Ilag Fish Sanctuary	23.10	2006
	Tacligan	Tamauyan Reef Fish Sanctuary	89.37	2006
Puerto Galera	San Antonio	Pto. Galera Fish Sanctuary	4,828.00	2006
Naujan	SitioTujod, Herrera	Tujod Fish Sanctuary	30.00	2006
	Masaguig	Masaguig Fish Sanctuary	16.39	2010
Pola	Bacawan	Bacawan Fish Sanctuary	23.44	2006
	Putting Cacao	St. John the Baptist Fish Sanctuary	49.38	2010
	Tagumpay	St. Peter the Rock MPA	25.11	2010
	Calima	Stella Mariz Fish Sanctuary	30.12	2013
	Misong	Song of the Sea Fish Sanctuary	60.61	2013
Pinamalayan	Tiguihan	Kingfisher Fishery Reserve	14.66	2013
	Ranzo	Ranzo Fish Sanctuary	16.39	2006
	Sitio Simboryo, Banilad	Banilad-Simboryo MPA	10.41	2010
	Sitio Ginapangan, Banilad	Banilad-Ginapangan MPA	10.28	2010
Gloria	Sitio Bulaklak, Pili	Pili Marine Protected Area	24.00	2010
	Agsalin	Agsalin Fish Sanctuary	80.13	2003
	Sta. Theresa	Sta. Theresa Fish Reserve	14.00	2013
Bansud	Tambong	Tambong Fishery Reserve	80.4	2013
	Proper Tiguisan	Bansud Fish Sanctuary	45.07	2010
Bongabong	Masaguisi	Masaguisi Fish Sanctuary	21.68	2003
Roxas	Paclasan	Paclasan Seagrass Protected Area	30.00	2010
Mansalay	Palaylay Cove & Balanga Point, B. Del Mundo	Palaypay Cove Fish Sanctuary	82.79	2006
	Sta. Brigida	Allegria Sea Turtle Habitat (Tikling Point)	8.2	2008
Bulalacao	Balatasan	Balatasan Fish Sanctuary	179.00	1993
	Maujao	Maujao Fish Sanctuary	40.00	2009

Source: Provincial Agriculture Office, 2014

5. Area and Percentage of Marine Protected Areas (MPAs) to Total Area of Municipal Waters

MUNICIPALITY	MUNICIPAL WATERS	MPA (has.)	MPA Percentage
Baco	16,004.16	0	0
Bansud	13,218.54	45.07	0.341
Bongabong	59,250.33	21.68	0.037
Bulalacao	32,112.78	219.00	0.682
Calapan City	26,726.81	78.44	0.293
Gloria	13,684.06	174.53	1.275
Mansalay	22,974.30	90.99	0.396
Naujan	29,619.73	46.39	0.157
Pinamalayan	30,800.53	61.08	0.198
Pola	30,994.38	203.32	0.656
Puerto Galera	13,916.91	4,828.00	34.692
Roxas	16,965.92	30.00	0.177
San Teodoro	4,520.27	112.47	2.488
Total	310,788.73	5,910.97	1.902

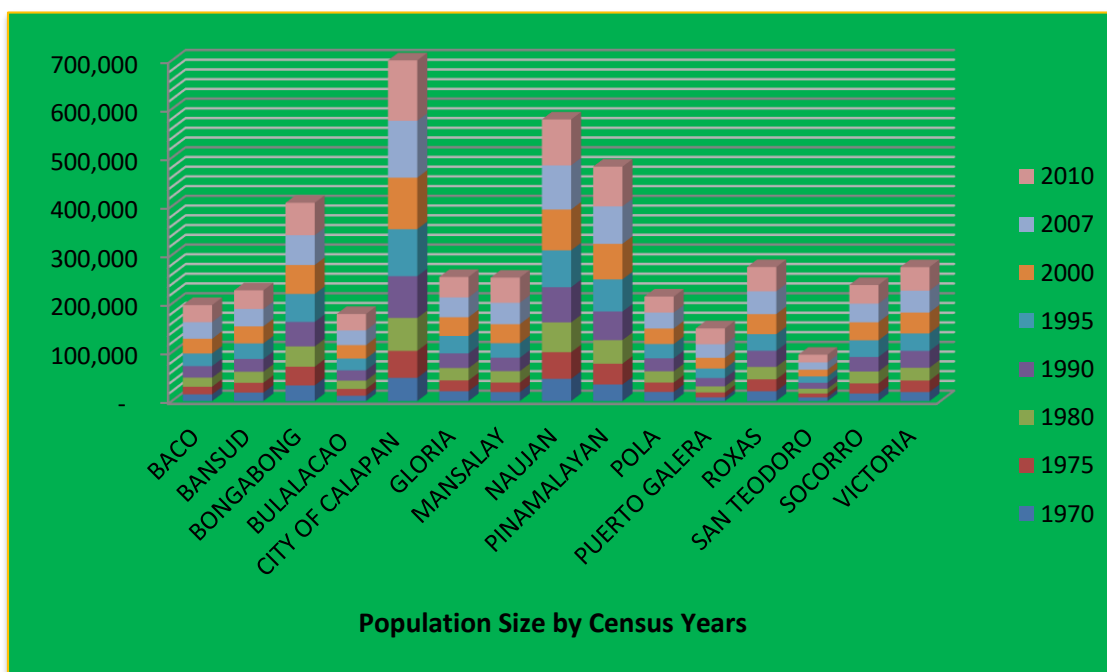
Source: Provincial Agriculture Office, 2014

Demography

A. POPULATION SIZE BY CITY/MUNICIPALITY BY CENSUS YEARS

PROVINCE/ MUNICIPALITY	CENSUS YEARS							
	1970	1975	1980	1990	1995	2000	2007	2010
ORIENTAL MINDORO	328,364	388,744	446,938	550,049	608,616	681,818	735,769	785,602
Baco	13,687	15,738	18,607	23,800	25,915	30,167	34,127	35,060
Bansud	17,492	20,095	22,614	26,225	31,901	35,032	35,664	38,341
Bongabong	32,167	38,358	41,719	50,213	57,403	59,477	61,127	66,569
Bulalacao	10,857	14,038	16,926	21,316	24,047	27,698	30,188	33,754
City of Calapan	47,532	55,608	67,370	85,898	96,506	105,910	116,976	124,173
Gloria	20,147	22,249	25,291	30,102	35,771	38,667	40,561	42,012
Mansalay	18,395	19,544	23,548	27,515	29,765	39,041	43,974	51,705
Naujan	45,685	54,641	61,216	72,203	75,726	83,892	90,629	94,497
Pinamalayan	33,936	42,701	48,431	58,777	65,903	72,951	77,119	81,666
Pola	18,789	19,072	23,188	26,833	29,156	31,938	32,635	32,984
Puerto Galera	7,659	10,129	12,306	17,200	19,485	21,925	28,035	32,521
Roxas	20,342	24,273	25,458	33,178	34,045	41,265	46,711	49,854
San Teodoro	7,721	7,862	9,707	12,223	12,983	13,806	15,039	15,810
Socorro	15,456	20,868	24,332	29,806	34,182	37,176	38,052	38,348
Victoria	18,499	23,568	26,225	34,760	35,828	42,873	44,932	48,308

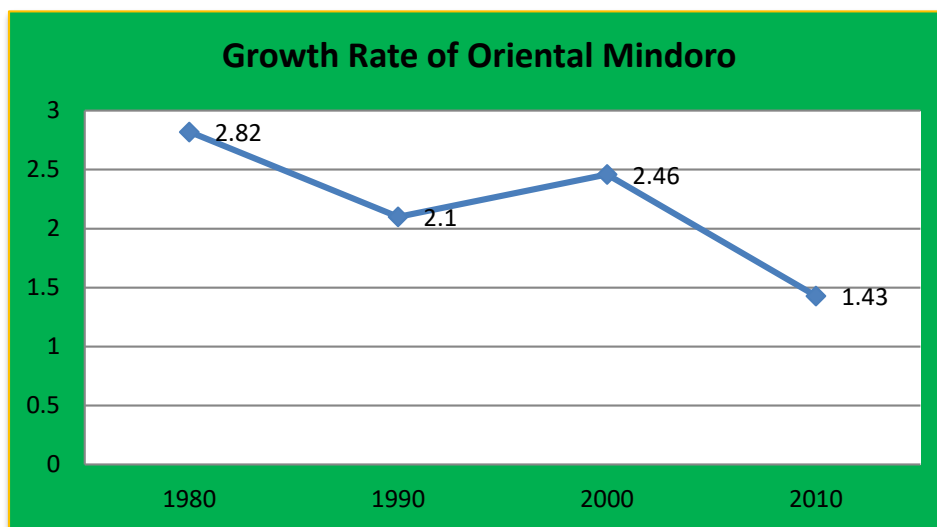
Source: Philippine Statistics Authority



B. ACTUAL AND PROJECTED POPULATION AND NUMBER OF HOUSEHOLDS, GROWTH RATE BY CITY/MUNICIPALITY

City/ Municipality	2010 (Actual)		2014 (Projected)		Growth Rate	
	Total Pop'n	No. of HH	Total Pop'n	No. of HH	2000-2007	2000-2010
Baco	35,060	7,483	37,226	7,920	1.71	1.51
Bansud	38,341	8,459	39,756	8,834	0.25	0.91
Bongabong	66,569	14,758	69,629	15,473	0.38	1.13
Bulalacao	33,754	7,427	36,536	8,119	1.19	2.00
Calapan City	124,173	27,242	132,313	28,764	1.38	1.60
Gloria	42,012	9,400	43,424	9,650	0.66	0.83
Mansalay	51,705	10,193	57,856	11,571	1.65	2.85
Naujan	94,497	21,479	99,115	22,526	1.07	1.20
Pinamalayan	81,666	18,043	85,420	18,982	0.77	1.13
Pola	32,984	7,582	33,408	7,593	0.30	0.32
Puerto Galera	32,521	7,661	38,074	9,065	3.45	4.02
Roxas	49,854	10,386	53,773	11,203	1.72	1.91
San Teodoro	15,810	3,508	16,688	3,708	1.19	1.36
Socorro	38,348	8,850	38,826	9,029	0.32	0.31
Victoria	48,308	10,485	50,669	11,015	0.65	1.20
OR. MDO.	785,602	172,956	831,512	184,780	1.06	1.43

Source: Philippine Statistics Authority (PSA), 2010 Census of Population



C. LIFE EXPECTANCY

Life Expectancy at Birth*	2010-2015	2005-2010	2000-2005
Male	68.85	67.35	65.85
Female	73.69	72.19	70.69

* in years; medium assumption; 2000 Census-Based National, Regional and Provincial Projections

Source: PSA Quickstat, August 2013

D. PROJECTED POPULATION BY PROVINCE, MIMAROPA, 2013-2015

Province	Actual Population	Growth Rate	Population Projection		
	2010	2000-2010	2013	2014	2015
Occidental Mindoro	452,971	1.76	477,311	485,712	494,261
Oriental Mindoro	785,602	1.43	819,789	831,512	843,403
Marinduque	227,828	1.60	238,940	242,763	246,647
Romblon	283,930	0.72	290,107	310,995	313,234
Palawan	771,667	2.66	834,899	857,107	879,906
Puerto Princesa City	222,673	3.24	245,026	252,965	261,161
MIMAROPA	2,744,671	1.79	2,906,071	2,958,090	3,011,040

Note: 2010– Actual Philippine Statistics Authority, Census of Population

E. URBAN-RURAL POPULATION

City/Municipality	No. of Brgys.			Population, 2007				Population, 2010			
	Urban	Rural	Total	Urban	%	Rural	%	Urban	%	Rural	%
Oriental Mindoro	59	367	426	157,897	21.46	577,872	78.54	167,849	21.37	617,753	78.63
Baco	1	26	27	2,717	7.96	31,410	92.04	2,846	8.12	32,214	91.88
Bansud	3	10	13	12,245	34.33	23,419	65.67	14,181	36.99	24,160	63.01
Bongabong	1	35	36	1,306	2.14	59,821	97.86	1,626	2.44	64,943	97.56
Bulalacao	4	11	15	8,858	29.34	21,330	70.66	10,624	31.47	23,130	68.53
Calapan City	5	57	62	20,127	17.21	96,849	82.79	18,131	14.60	106,042	85.40
Gloria	6	21	27	13,106	32.31	27,455	67.69	12,924	30.76	29,088	69.24
Mansalay	3	14	17	11,682	26.57	32,292	73.43	13,620	26.34	38,085	73.66
Naujan	4	66	70	9,165	10.11	81,464	89.89	9,040	9.57	85,457	90.43
Pinamalayan	9	28	37	25,717	33.35	51,402	66.65	27,803	34.04	53,863	65.96
Pola	2	21	23	1,296	3.97	31,339	96.03	1,085	3.29	31,899	96.71
Puerto Galera	3	10	13	9,920	35.38	18,115	64.62	11,577	35.60	20,944	64.40
Roxas	4	16	20	16,748	35.85	29,963	64.15	18,151	36.41	31,703	63.59
San Teodoro	1	7	8	1,990	13.23	13,049	86.77	1,734	10.97	14,076	89.03
Socorro	6	20	26	8,394	22.06	29,658	77.94	8,295	21.63	30,053	78.37
Victoria	7	25	32	14,626	32.55	30,306	67.45	16,212	33.56	32,096	66.44

Source: Philippine Statistics Authority, 2007 and 2010

Note: Details may not add up to totals due to rounding

F. POPULATION DENSITY (Gross and Urban)

City/Municipality	GROSS POPULATION DENSITY (per sq.km.)		URBAN POPULATION DENSITY (per sq.km.)	
	2007	2010	2007	2010
Oriental Mindoro	169	180	440	467
Baco	141	145	625	655
Bansud	137	147	992	1149
Bongabong	123	134	261	325
Bulalacao	99	111	99	119
Calapan City	441	468	4541	4091
Gloria	176	182	535	527
Mansalay	86	101	231	270
Naujan	172	179	466	460
Pinamalayan	278	295	934	1010
Pola	251	253	257	215
Puerto Galera	125	146	249	291
Roxas	536	572	1174	1272
San Teodoro	41	43	3618	3153
Socorro	255	257	252	249
Victoria	157	169	441	489

Source: Philippine Statistics Authority/ Provincial Planning and Development Office, 2007 and 2010

G. MANGYAN TRIBES BY MUNICIPALITY

Municipality	Tribes	Municipality	Tribes
First District		Second District	
Puerto Galera	Iraya	Pinamalayan	Tadyawan/Tau-buid
San Teodoro	Iraya, Alangan	Gloria	Tadyawan
Baco	Iraya, Alangan	Bansud	Buhid/Bangon
Naujan	Alangan, Tadyawan	Bongabong	Buhid/Bangon
Victoria	Alangan, Tadyawan, Hanunoo	Roxas	Buhid/Bangon
Socorro	Tadyawan	Mansalay	Hanunoo
Pola	Tadyawan	Bulalacao	Hanunoo

Source: Mangyan Mission and National Commission for Indigenous Peoples (NCIP), 2009

H. MANGYAN POPULATION BY SEX, 2008

City/Municipality	Number of Mangyan Population		
	Total	Male	Female
Baco	4,995	2,568	2,427
Bansud	1,719	869	850
Bongabong	5,536	2,917	2,619
Bulalacao	10,195	5,307	4,888
Calapan City	117	52	65
Gloria	932	462	470
Mansalay	8,600	4,395	4,205
Naujan	4,654	2,395	2,259
Pinamalayan	1,171	605	566
Pola	782	438	344
Puerto Galera	2,065	1,092	973
Roxas	2,111	1,110	1,001
San Teodoro	2,506	1,355	1,151
Socorro	1,222	646	576
Victoria	1,500	803	697
Oriental Mindoro	48,105	25,014	23,091

Source: Community Based Monitoring System Survey, 2008

Economic Profile

A. AGRICULTURE

1. Rice Area

City/Municipality	Irrigated Area (ha)	Rainfed Area (ha)	Total Rice Area (ha)
Baco	2,946.00	2,097.00	5,043.00
Bansud	5,251.00	502.50	5,753.50
Bongabong	8,925.00	2,573.00	11,498.00
Bulalacao	769.00	716.00	1,485.00
Calapan City	14,123.00	1,880.00	16,003.00
Gloria	4,873.00	260.00	5,133.00
Mansalay	2,964.00	1,860.00	4,824.00
Naujan	22,760.00	5,565.00	28,325.00
Pinamalayan	7,189.00	757.00	7,946.00
Pola	1,813.00	802.00	2,615.00
Puerto Galera	8.00	8.00	16.00
Roxas	4,829.00	156.00	4,985.00
San Teodoro	293.00	474.00	767.00
Socorro	3,382.00	835.00	4,217.00
Victoria	9,044.00	1,443.00	10,487.00
Total	89,169.00	19,928.50	109,097.50

Source: Provincial Agriculture Office, 2014

2. Irrigated Area and Type of Irrigation Facility

City/Municipality	RIS (ha)	CIS (ha)	Pump/STW (ha)	TOTAL (ha)
Baco		652.00		652.00
Bansud	835.00	934.00		1,769.00
Bongabong		1,057.25		1,057.25
Bulalacao		112.00		112.00
Calapan City	3,650.00		59.76	3,709.76
Gloria		922.42		922.42
Mansalay		265.00		265.00
Naujan	22.00	912.37	438.72	1,373.09
Pinamalayan	2,493.00			2,493.00
Pola	60.00	570.40	45.00	675.40
Roxas		146.20		146.20
Socorro	226.00	650.00		876.00
Victoria	300.00	217.00		517.00
Total	6,751.00	4,892.64	543.48	24,608.12

Notes: NIA-Assisted Irrigation Systems only; STW – Shallow Tube Well; CIS – Communal Irrigation System
Source: National Irrigation Administration, 2014

3. Rice Production

City/ Municipality	Farmers (No.)	Area Harvested (ha.)	Production (MT)	Average Yield (MT/ha)
Baco	3,604	5,043	18,578.23	3.68
Bansud	3,504	5,753.50	27,064.15	4.70
Bongabong	5,726	11,498.00	52,031.47	4.52
Bulalacao	1,382	1,485.00	6,096.78	4.10
Calapan City	8,402	16,003.00	75,956.16	4.74
Gloria	3,596	5,133.00	23,102.37	4.50
Mansalay	3,840	4,824.00	20,999.94	4.35
Naujan	14,860	28,325.00	131,226.25	4.63
Pinamalayan	4,901	7,946.00	38,888.520	4.89
Pola	1,509	2,615.00	14,217.150	5.42
Puerto Galera	21	16.00	63.00	3.93
Roxas	2,812	4,985.00	25,233.68	5.06
San Teodoro	576	767.00	2,637.35	3.43
Socorro	2,500	4,217.00	19,388.85	4.59
Victoria	4,601	10,487.00	46,204.52	4.40
Total	61,834	109,097.50	501,688.42	4.58

Source: Provincial Agriculture Office, 2014

4. Corn Production

Municipality	Area Planted (ha)	Production (MT)	Average Yield (MT/ha)
Baco	31.75	52.00	2.00
Bansud	377.00	512.00	1.64
Bongabong	704.00	717.00	2.23
Bulalacao	451.50	872.00	1.93
Calapan	3.55	5.30	1.49
Gloria	113.25	245.00	2.61
Mansalay	60.00	150.00	2.50
Naujan	106.00	285.40	2.69
Pinamalayan	33.35	104.27	4.25
Puerto Galera	26.70	33.20	1.24
Roxas	40.00	120.00	3.00
San Teodoro	5.500	7.80	2.22
Victoria	35.00	141.00	4.40
Total	1,987.600	2,858.97	2.47

Source: Provincial Agriculture Office, 2014

Note: Areas affected by typhoon - 7.38 hectares

Areas not yet harvested - 511.44 hectares

Partial average production/hectare - 2.47 mt

5. Vegetable Production

Commodity	Area Planted (ha)	Area Harvested(ha)	Production (MT)	Average Yield (MT/ha)
Root Crops	211.00	124.06	365.10	2.94
Fruit Vegetables	608.56	261.701	918.47	3.51
Leafy Vegetables	125.23	40.92	59.66	1.46
Legumes	255.21	112.66	118.216	1.05
Condiments	360.685	301.525	3,287.065	10.90
Total	1,560.685	840.866	4,748.511	5.65

Source: Provincial Agriculture Office, 2014

The table shows that the area harvested decreased and generated low production due to continuous rain and flash flood.

6. Coconut Production

City/ Municipality	Coconut Area (ha)	No. of Coco Farmers	No. of SCFOs	No. of Trees Planted		Estimated Nut Production (wholenuts-pcs)
				Bearing	Non-Bearing	
Baco	4,816	2,823	2,798	345,150	142,981	15,531,750
Bansud	1,584	585	516	91,490	27,593	4,574,500
Bongabong	7,453	2,584	12	353,747	186,896	16,626,109
Bulalacao	728	829	5	32,211	23,685	1,352,862
Calapan City	2,763	938	9	186,574	88,109	8,022,682
Gloria	4,538	3,371	14	441,158	47,797	19,410,952
Mansalay	997	834	5	52,971	18,580	2,277,753
Naujan	3,527	3,852	10	279,202	119,625	12,284,888
Pinamalayan	4,952	4,468	9	501,567	51,343	24,576,783
Pola	9,738	5,426	11	799,138	204,040	39,956,900
Puerto Galera	3,385	1,215	4	232,480	101,128	9,764,160
Roxas	1,272	1,037	8	77,803	23,334	3,345,529
San Teodoro	1,989	1,017	7	142,079	98,515	6,109,397
Socorro	2,538	1,427	10	275,074	28,353	13,203,552
Victoria	1,379	832	6	71,081	43,061	2,985,402
Total	51,659	31,238	132	3,881,725	1,205,040	180,023,219

Source: Philippine Coconut Authority, 2014

Note:- Small Coconut Farmers Organization (SCFO)

7. High Value Commercial Crops (HVCC) Production

Commodity	Farmers Served	No. of Trees Planted	Area Planted (ha)	Production (MT)	Average Yield (MT/ha)
Banana		4,816,930	29,235.68	128,399.55	4.39
Mango	3,748	157,438	1,603.81	10,776.35	6.71
Citrus	2,802	1,985,552	3,573.71	15,882.00	4.44
Rambutan	1,581	1,387,978	3,446.83	18,234.15	5.2
Lanzones	1,532	1,462,980	3,659.85	19,224.92	5.2
Durian	394	57,628	373.93	1,283.24	3.4
Papaya	25	58,333	35.00	168.00	4.8
Pineapple	21	15,387	24.62	30.774	1.25
Guyabano	10	200	5.00	-	-
TOTAL	10,113	9,942,426	41,958.43	193,998.984	4.42

Source: Provincial Agriculture Office, 2014

8. Top Five Fruit Production

City/ Municipality	Production (MT)					
	Banana	Citrus	Rambutan	Lanzones	Mango	Total
Baco	5,538.90	574.46	650.00	425.00	567.25	7,755.61
Bansud	25,456.03	2.60	772.50	2,894.35	362.15	29,487.634
Bongabong	18,578.91	347.40	1,961.60	150.00	275.00	21,312.91
Bulalacao	-	-	-	-	6,372.86	6,372.86
Calapan City	273.05	175.91	60.65	57.5	102.66	669.77
Gloria	13,414.08	200.00	59.00	82.50	364.92	14,120.50
Mansalay	4,351.41	379.20	250.00	420.00	1,061.73	6,462.34
Naujan	9,176.03	9,169.03	2,407.20	992.414	71.00	21,815.67
Pinamalayan	10,029.51	157.25	563.20	249.00	182.93	11,181.89
Pola	11,135.50	2,558.12	440.00	297.50	7.50	14,438.62
Puerto Galera	772.20	15.94	7.50	5.50	90.50	891.64
Roxas	2,253.30	620.25	265.00	496.25	837.15	4,471.95
San Teodoro	4,327.17	115.33	12.50	225.00	132.50	4,812.50
Socorro	22,445.12	1,279.00	5,620.00	4,805.00	261.80	34,410.92
Victoria	648.34	287.47	5,165.00	8,124.907	87.19	14,312.91
Total	128,399.55	15,881.96	18,234.15	19,224.92	10,777.14	192,517.72

Source: Provincial Agriculture Office, 2014

9. Livestock and Poultry Population

City/ Municipality	Carabao	Cattle	Swine	Goat	Horse	Duck	Chicken
Baco	857	846	4,582	1,063	12	1,079	26,338
Bansud	1,710	2,849	13,442	3,798	194	1,402	31,985
Bongabong	1,832	4,911	7,088	7,771	36	16,197	96,843
Bulalacao	1,141	2,637	4,103	5,973	16	695	18,995
Calapan City	1,496	2,380	12,695	1,998	28	14,616	59,017
Gloria	1,666	2,738	6,941	1,458	56	2,907	30,041
Mansalay	1,252	1,484	10,245	10,340	157	7,347	35,293
Naujan	4,277	4,911	8,681	3,919	98	12,512	67,080
Pinamalayan	1,302	1,451	6,488	2,791	70	3,205	44,268
Pola	1,529	782	5,488	2,562	196	1,176	35,353
Puerto Galera	195	363	975	881	22	433	20,777
Roxas	2,044	2,041	12,164	4,243	43	10,563	44,289
San Teodoro	932	592	6,647	2,380	9	797	18,415
Socorro	567	824	7,645	1,102	63	3,328	14,521
Victoria	1,152	749	6,701	1,002	82	4,605	21,329
Total	21,952	29,558	113,885	51,281	1,082	80,862	564,544

Source: Provincial Veterinary Office, 2014

10. Fishery Area Resource, Production and Income

Indicators	Area (ha)	Production (MT)	Income (Php)
Freshwater			
* <i>Tilapia</i>	157.2612	650	52,659,300.00
Brackishwater			
* <i>Sugpo and Bangus Polyculture</i>	2,997.215	1,478.58	170,483,700.00
Sugpo (30%)			
Bangus (70%)			
Fish cages/Fish Pen		6.64	784,100.00
Municipal Fisheries		92,618.14	244,721,284.00
Commercial Fisheries		2,798.47	
TOTAL	4,569,827	97,551.83	468,648,384.00

Source: Provincial Agriculture Office, 2014 and *Bureau of Agricultural Statistics

Per capita fish consumption - 38 kg/yr (BFAR, 2007)
 No. of registered fisherfolk - 14,206

B. TOURISM

1. Tourist Establishments

City/ Municipality	No. of Establishment (Hotels/Resorts)	No. of Rooms	Bedding Capacity
Baco	3	34	88
Bansud	5	42	129
Bongabong	8	69	232
Bulalacao	4	22	95
Calapan City	28	449	1,310
Gloria	7	52	132
Mansalay	6	24	58
Naujan	8	55	339
Pinamalayan	12	126	312
Pola	6	14	38
PuertoGalera	154	2,598	6,952
Roxas	22	123	297
San Teodoro	3	23	68
Socorro	3	26	52
Victoria	6	31	90
TOTAL	275	3,688	10,192

Source: Provincial Tourism, Investment and Enterprise Development Office

2. Tourist Attractions

- ★ The Tamaraw
- ★ Mount Halcon
- ★ History and Culture
- ★ Industrial Tourism
- ★ Nature
- ★ Sport and Recreational Facilities
- ★ Health and Wellness
- ★ Other unspecified attractions

3. Tourist Sites and Destinations

CITY/MUNICIPALITY	TOURIST SITES AND DESTINATIONS
Puerto Galera	The Cross and Canyons (Muelle Bay) Garita or Spanish Guardhouse Excavation Museum Baclayan and TalipananMangyan Settlements Paradise Zoo (Herpa World) Giant Clam Garden Hibiscus Garden Municipal Forest Park Ponderosa White Sand Beaches (19 beaches) Premier Dive Sites (36 dive sites) Waterfalls (4 waterfalls)

CITY/MUNICIPALITY	TOURIST SITES AND DESTINATIONS
Puerto Galera	Coral Garden at Long Beach Tabinay and Villaflor Hot Springs Python Cave Puerto Galera Bay Mt. Malasimbo The Black Rice at Muelle Marble Mine
San Teodoro	Punta Baluarte Spanish Fortress Saclag Settlement Farm School Saclag Ecological Waterfalls (13 waterfalls) Agsambalilo Tabunan Hot Spring Aras Cave TagongParaiso Subuan River Saclag Hanging Bridge Punta Beach Arigoy White Water Kayaking
Baco	Mount Halcon Rivers (4 rivers) Lantuyan and Bayanan Waterfalls CuevaSagrada TiboyBaras Rapids Gumahan San Andres (The Sunken Town/Old Settlement) Mangangan and Karayrayan Tunnels Nature's Park
Calapan City	Calapan Recreational and Zoological Park Bulusan-Suqui Eco Trail Pachoca-Balite and Lazareto, Suqui-Parang Beaches Caluangan Lake Islets (4 islets) Parang Coconut and Banana Plantations Sapul Orchard Casa Real Ruins Calapan City Hall Silonay Mangrove Conservation and Protection Area Kayak, Boardwalk Calapan Town Plaza
Naujan	Naujan Lake Pungao and Montelago Hot Springs Waterfalls (5 waterfalls)

CITY/MUNICIPALITY	TOURIST SITES AND DESTINATIONS
Naujan	Bancuro Church Ruins Baluarte (Bell Tower) Sta. Isabel Tree Farm MILAR Aquatic Farm Bancuro Butterfly Sanctuary Naujan Town Plaza
Victoria	Tongloy Mountain Lake Fruit Orchards Philippine Tree Farm, Inc. Polester and Butterfly Farms Gipit Picnic Grove Villa Bautista Resort Triple L Resort
Socorro	BatongDalig River La Fortuna Waterfalls Lake View Park Tree Farms Tyron Butterfly Breeding Farm Marl Insects and Butterfly Culture Branch
Pola	Tuntong Point Waterfalls (5 waterfalls) St. John the Baptist Shrine Misong Archaeological Site Old Houses Misong Mangrove Forest Aguada Beach
Pinamalayan	Rosario Cave Cawa-cawa Cave and Marayos Waterfalls MahabangBuhangin BaniladBayview Mts. Dumali, Beyer and Worcester Bongol Point Pili-Banilad-Ranzo Reefs Pinamalayan Theme Park Mangyan Shooting Range Rainbow Junction Parola at Pinamalayan Bay Magdalena Beach Resort Bulaklak Garden Resort Ranzo Stairway to Heaven Pinamalayan Airport Banilad Archaeological Site Tau BuhidMangyan Settlement Ranzo Lighthouse

CITY/MUNICIPALITY	TOURIST SITES AND DESTINATIONS
Gloria	WalangLangit Waterfalls Bulaklakan Tree Farm Mount Manguyang Camping Site
Bansud	Rosacara River Waterfalls (4 waterfalls) Bansud Museum Mangyan Settlements Bansud Municipal Park and Plaza
Bongabong	Caves (3 caves) Waterfalls (7 waterfalls) 17 th Century Kuta Shrine Ancestral House of Vicente Ilagan BatanganMangyan Community Botanical Park
Roxas	San Rafael Cave TaugaDiit River Happy Valley Mountain View Fish Sanctuary San Vicente Eco-Forest
Mansalay	MatangPugita and Lamak River/Waterfalls Palaypay Burial Ground and PalaypayDiit River LanaoSigong River Mansalay Bay BugtongBato Point Mangyan Virgin Cave Acacia Park and Mountain View Palace Buktot and Kasabangan White Sand Beaches Bait Mangyan Village in Brgy. Panaytayan Burial Cave in Balanga Mangyan Culture (settlement) Municipal Museum Wasig Airport Turtle Sanctuary Mansalay Eco Park Mansalay Municipal Port
Bulalacao	White sand islets and reefs (7 islands, 5 islets) Cabugao Waterfalls BagongSikat Falls Panangiran Peak Buyayao Peak Mt. Namalayan Colon Hill Lubok Sunken 17 th Century Sunken Church

Source: Provincial Tourism, Investment and Enterprise Development Office (PTIEDO)

4. Festivities by City/Municipality

City/ Municipality	Foundation Day	Date of Fiesta	Festival	
			Name	Date
Baco	January 25	March 19	Banana	January 25
Bansud	July 4	January 17-19	Basudani	January 19
Bongabong	December 7	March 19	Sulyog	March 19
Bulalacao	February 15	June 29	Biniray	June 29
Calapan City	March 21	January 1	Harvest/Kalap Festival	March 21
Gloria	October 1	February 14-15	Kawayanan	Sept. 29 – Oct. 1
Mansalay	July 24	November 25	MansalensesPalakaya	July 24
Naujan	January 4	September 10	DaBaLisTiHit	September 10
			Bibingka	May 24
Pinamalayan	April 25	April 25	Bahaghari	April 25
			Bahaghari Centurion	Every Holy Week
Pola	January 1	June 24	Sab'uyan&Bankathon	June 24
			PolaMoriones	April
Puerto Galera	March 18	December 8	KaaldawanIraya	October 12
			De Galera	May 10-12
Roxas	November 15	January 25	Sipag	July 28
San Teodoro	February 16	December 8	Adyawan Festival	December 8
Socorro	July 26-27	July 26-27	PakapyaAgtike	July 26
Victoria	September 18	October 14-15	Kapakyanan	September 18

Source: Provincial Tourism, Investment and Enterprise Development Office, 2014

C. COMMERCE AND INDUSTRY

1. Business Establishments by Type, Investments & Employment

Sectoral Classification	No. of Applications	Investments (PhP)	Employment
Agriculture	10	1,780,000.00	36
Manufacturing	58	5,218,000.00	166
Services	812	298,186,860.00	2,373
Tourism			
Trading	753	97,664,104.00	1,597
Total	1,633	402,848,963.00	4,172

Source: Department of Trade and Industry, 2014

2. Banks with Automated Teller Machines in Calapan City

- | | |
|---|------------------------------|
| 1. Land Bank of the Philippines (LBP) | 12. Max Bank |
| 2. Development Bank of the Philippines (DBP) | 13. East West Unibank |
| 3. Philippine National Bank (PNB) | 14. Security Bank |
| 4. United Coconut Planters Bank (UCPB) | 15. Maybank |
| 5. First Allied Bank | 16. CARD Bank |
| 6. MetroBank | 17. First Consolidated Bank |
| 7. Bank of the Philippine Islands (BPI) | 18. Robinson's Bank |
| 8. China Bank | 19. City Savings |
| 9. Banco de Oro (BDO) | 20. PS Bank |
| 10. Bank of Commerce | 21. Philippine Business Bank |
| 11. Rizal Commercial Banking Corporation (RCBC) | 22. Asia United Bank |

3. Number of Banks by City/Municipality

City/ Municipality	Banks
Baco	1
Bansud	2
Bongabong	3
Bulalacao	-
Calapan City	34
Gloria	4
Mansalay	1
Naujan	3
Pinamalayan	12
Pola	1
Puerto Galera	3
Roxas	5
San Teodoro	1
Socorro	3
Victoria	2
TOTAL	75

Infrastructure and Utilities

A. TRANSPORTATION

Facilities	Number
1. Roads (as of 2014)	
a. National Roads (KM)	329.445
▪ Concrete – 250.731kms; Gravel – 0.615kms; Asphalt – 78.099kms	
b. Provincial Roads (KM) as of 2013	897.285
▪ Concrete – 384.4380kms; Gravel – 498.3961kms; Earth – 14.431km; Asphalt – 0.020km	
2. Bridges (number)	
a. National	94
b. Provincial	101
3. Land Transportation	
a. Registered vehicles	27,885
b. License issued	28,006
c. Total collection from fines on law enforcement (PhP)	2,039,360.00
4. Airports	
a. Existing airports (Calapan, Pinamalayan, Wasig)	
b. Aircraft movements	
▪ Private/commercial aircraft landed (Calapan)	1,345
▪ Government including military craft	23
5. Sea Ports	
a. National ports (Calapan, Roxas, Puerto Galera, Bulalacao, Pola)	5
b. Municipal ports(1 in Puerto Galera; 1 each in Calapan, Pinamalayan, Mansalay, Bulalacao and Bansud)	6
	23
6. RO-RO vessels	
	8
7. Fast craft	
	8
8. Shipping company	
	17,922
9. Ship calls	
	2,680,953
10. Passengers	
a. Disembarked	2,356,749
b. Embarked	
11. Cargo (MT)	
a. Inbound	7,873
b. Outbound	7,636

Source: Land Transportation Office, Philippine Ports Authority, Civil Aviation Authority, Provincial Engineering Office, Department of Public Works and Highways, 2014

B. COMMUNICATION

1. Newspapers (Coverage-Or. Mindoro and Southern Tagalog)

- | | |
|----------------------|----------------------------|
| a. Island Sentinel | e. Mindoro Bulletin |
| b. Halcon Star | f. Mindoro Weekly Reporter |
| c. Island Observer | |
| d. Island Profiles | |
|
h. Post Office - | - 10 |

2. Telegraphic Services

- | | |
|-------------------------------------|------|
| a. Telegraphic transfer office | - 4 |
| b. Office handling social telegraph | - 10 |

3. Wireless Service Providers

City/ Municipality	No. of cellsites		
	Smart Communications	Globe Telecom	Digitel (SunCellular)
Baco	1	1	1
Bansud	2	1	
Bongabong	1	1	
Bulalacao	1	1	
Calapan City	6	9	1
Gloria	2	1	
Mansalay	1	1	
Naujan	3	4	1
Pinamalayan	4	1	1
Pola	1	1	
Puerto Galera	3	5	
Roxas	2	3	
San Teodoro	1	1	
Socorro	1	2	
Victoria	2	2	1
TOTAL	31	34	5

4. Telephone Companies (landline)

- | | |
|-----------------------------------|---|
| a. Calapan Telephone System, Inc. | - Calapan City, Puerto Galera, Victoria, Socorro, Pinamalayan, Bongabong, Roxas |
| b. Globe Telecom | - Calapan City, Puerto Galera, Naujan, Victoria, Socorro, Pinamalayan, Bongabong, Roxas |

5. Internet Service Providers

- a. Calapan Telephone System, Inc. (CATSI) - *Calapan City, Pinamalayan, Bongabong*
- b. Dalcan Technologies - *Calapan City, Puerto Galera*
- c. Smart Communications - *Provincewide*
- d. Globe telecom - *Calapan City, Puerto Galera, Naujan, Victoria, Pinamalayan*
- e. TamarawVision Net, Inc. - *Calapan City*

6. Radio Stations and Cable TV Networks

City/ Municipality	FM Radio Station	Cable Television Network	City/ Municipality	FM Radio Station	Cable Television Network
1st District			2nd District		
Baco		1	Pinamalayan	1	2
San Teodoro		1	Gloria		1
Puerto Galera		1	Bansud		1
Calapan City *	4	2	Bongabong	1	1
Naujan	1	1	Roxas	1	1
Victoria	1	1	Mansalay		1
Socorro		2	Bulalacao		1
Pola		1			
Total	6	10	Total	3	8

* with 1 AM Radio Station - DWIM 9.36kHz

7. Ratio of postal employees to total population

Province/ Municipality	Projected No. of HH 2014	No. of Postal Employees	Ratio	Province/ Municipality	Projected No. of HH 2014	No. of Postal Employees	Ratio
Baco	7,920			Pinamalayan	18,982	3	1:6,327
Bansud	8,834	1	1:8,834	Pola	7,593		
Bongabong	15,473	1	1:15,473	Puerto Galera	9,065	2	1:4,532
Bulalacao	8,119			Roxas	11,203	2	1:5,602
Calapan City	28,764	12	1:2,397	San Teodoro	3,708		
Gloria	9,650			Socorro	9,029	1	1:9,029
Mansalay	11,571	1	1:11,571	Victoria	11,015	1	1:11,015
Naujan	22,526	1	1:22,526	Oriental Mindoro	184,780	25	1:7,391

Source: Philippine Postal Corporation, 2014

C. WATER

1. Level III Systems

City/ Municipality	Water System
Calapan City	Calapan Waterworks System and Dev't Corporation
Baco	Pag-asa Water System
Bongabong	Bongabong Waterworks System, Formon Waterworks System, Labasan Waterworks System, San Isidro Waterworks System
Bulalacao	Campaasan Water System; Nasukob Water System; Milagrosa Water System
Gloria	Tambong Water System; Malamig Water System
Mansalay	Mansalay Water System
Naujan	Naujan Water District
Pinamalayan	Pinamalayan Water District
Pola	Pola Water District
Puerto Galera	Puerto Galera Water Works Office
Roxas	Roxas Water District; Cantil Waterworks Association
Socorro	Socorro Water System
Victoria	San Gabriel Water System

Source: Provincial Planning and Development Office, 2012

2. Population by Type of Water Facility used

Type of Water Facility	Total	Urban	Rural
Community Water System - Owned	84,680	20,486	64,194
Community Water System – Shared	96,117	10,476	85,641
Deep well – owned	57,240	10,499	46,741
Deep well – shared	120,095	17,898	102,197
Artesian well – owned	52,150	5,560	46,590
Artesian well – shared	86,165	7,057	79,108
Dug/shallow well – owned	18,951	525	18,426
Dug /shallow well – shared	32,196	1,143	31,053
River, stream, lake, spring bodies of water	61,264	2,007	59,257
Bottled Water	4,792	1,883	2,909
Tanker Truck/Peddler	59,111	21,620	37,491
Other	3,433	356	3,077
Total	676,194	99,510	576,684

Source: Community Based Monitoring System Survey, 2008

3. Potential Water Sources

- a. Surface Water (rivers, streams, lakes) are available in the main river of Oriental Mindoro and in the vast Naujan Lake.
- b. Groundwater

4. Watershed Areas

- a. Baco-Bucayao Watershed (Baco, San Teodoro)
- b. Mag-AsawangTubig Watershed (Victoria)
- c. Pola Watershed (Socorro)
- d. Bongabong Watershed (Bongabong, Bansud, Mansalay&Roxas)
- e. Mayabig Community Watershed (Bayanan, Baco)
- f. Sabang Community Watershed (Sabang, Pinamalayan)
- g. Lancawan Community Watershed (Conrazon, Bansud)

D.POWER

1. Status of Electrification

City/ Municipality	Barangays			House Connections	Members Approved
	Covered	Energized	%		
Baco	27	27	100	7,072	5,271
Bansud	13	13	100	7,675	6,364
Bongabong	36	36	100	13,062	10,385
Bulalacao	15	15	100	3,837	3,352
Calapan City	62	62	100	40,881	26,643
Gloria	27	27	100	8,665	6,603
Mansalay	17	17	100	5,947	5,409
Naujan	70	70	100	22,101	18,131
Pinamalayan	37	37	100	18,608	13,171
Pola	23	23	100	6,789	6,624
Puerto Galera	13	13	100	9,093	4,907
Roxas	20	20	100	10,264	8,239
San Teodoro	8	8	100	3,636	2,376
Socorro	26	26	100	8,464	6,639
Victoria	32	32	100	11,380	8,623
TOTAL	426	426	100%	177,474	132,737

2. Total Dependable Capacity - 41.5 MW

3. Maximum Power Demand - 39.02 MW

4. Present Sources of Power

Power Plant	Installed Capacity	Dependable Capacity	Location
1. NPC-MONARK (contract ended June 2014)	8 MW	8 MW	Sta. Isabel, Calapan City
2. Power One Corp.	9 MW	7 MW	Sta. Isabel, Calapan City
3. ORMIN POWER	6.4 MW	5.6 MW	Sta. Isabel, Calapan City
4. LinaoCawayan Mini Hydro-Lower Cascade	2.1 MW	1.2 MW	Calangatan, San Teodoro
5. Mindoro Grid Corp. - Calapan	6.6 MW	5 MW	Sta. Isabel, Calapan City
6. Mindoro Grid Corp. - Bongabong	6.6 MW	5 MW	Labasan, Bongabong
7. Global Power	7.5 MW	5 MW	Papandayan, Pinamalayan
8. Dulangan Mini Hydro	1.6 MW	1.2 MW	Paitan, Naujan
9. LinaoCawayan MHPP-Lower Cascade	2.1	1.2	San Teodoro, Or. Mindoro
10. LinaoCawayan MHPP-Upper Cascade	3	1.5	San Teodoro, Or. Mindoro
11. Mindoro Grid Corporation-Calapan	6.6	5	Calapan City
12. Mindoro Grid Corporation-Bongabong	6.6	5	Bongabong, Or. Mindoro
13. DMCI 15MW Land Based Power Plant	15	0	Calapan City

5. Power Substations

Power Substations [ORMECO]	MVA RATING	Ownership
Calapan	30 MVA	NPC
Bansud	-	-
Pinamalayan	10 MVA	GBH
Naujan	5 MVA	ORMECO, Inc.
Roxas	5 MVA	ORMECO, Inc..
Socorro-Pola	5 MVA	ORMECO, Inc.
Puerto Galera	10 MVA	ORMECO, Inc.
Bongabong	5 MVA	ORMECO, Inc.

6. Breakdown of actual connections

a. Commercial	-	9,356
b. Residential	-	133,316
c. Industrial	-	134
d. Public Buildings	-	3,362
e. Street Lights	-	633
f. BAPA	-	3,828
TOTAL		150,629

Source: Oriental Mindoro Electric Cooperative, Inc., 2014

Social Development Profile

A. LABOR AND EMPLOYMENT

1. Comparative Labor Force Participation Rates, Employment and Unemployment Rates, MIMAROPA

Labor and Employment	2012	2013	2014
Labor Force Participation Rate	68.4	66.3	67.2
Employment Rate	95.8	95.9	95.4
Unemployment Rate	4.2	4.1	4.6
Underemployment Rate	22.6	23.4	20.4

2. Comparative Employment Status of Household Population 15 years old and over, MIMAROPA (in thousands)

Labor and Employment	2012	2013	July 2014
Total in the labor force	1,301	1,294	1,367
Total Employed	1,247	1,241	1,310
Total Unemployed	55	53	56

Note: Details may not add up to total due to rounding

Source: <http://bles.dole.gov.ph/PUBLICATIONS>

B. POVERTY AND INCOME

1. Annual per Capita Poverty Threshold, Poverty Incidence, Magnitude of Poor Families and Population by Province, MIMAROPA

Region/ Province	Annual Per Capita Poverty Threshold (in Pesos)			Poverty Incidence among Families (%)			Magnitude of Poor Families Estimate		
	2006	2009	2012	2006	2009	2012	2006	2009	2012
PHILIPPINES	13,357	16,871	18,935	21	20.5	19.7	3,809,283	4,036,915	4,214,921
Region IV-B	12,645	15,613	17,292	32.4	27.2	23.6	176,282	160,226	150,486
Marinduque	12,909	15,678	17,180	31.9	27.4	23.9	15,481	13,971	12,743
Occidental Mindoro	12,725	15,937	17,412	33.5	25	29.8	30,084	24,203	31,070
Oriental Mindoro	13,396	16,710	17,415	35.7	28.8	21.5	56,043	48,741	39,272
Palawan	11,521	14,418	16,696	28.2	25.3	20.5	53,193	53,131	47,730
Romblon	12,811	15,547	18,464	36.3	32.6	30.4	21,481	20,181	19,671

Source: Philippine Statistics Authority, December 2013

2. Annual per Capita Food Threshold, Subsistence Incidence, Magnitude of Poor Families and Population by Province, MIMAROPA – 2012

Region/Province	Annual Per Capita Food Threshold (PhP)	Subsistence Incidence (%)	
		Families	Population
Region IV - B	12,082	16.8	15.8
Occidental Mindoro*	12,103	31.9	32.2
Oriental Mindoro	12,192	26.1	24.0
Marinduque	11,997	31.3	29.1
Romblon	12,893	27.6	27.8
Palawan*	11,697	41.6	36.2

*Coefficient of Variation (CV) of 2012 poverty incidence among families is greater than 20%

Source: Philippine Statistics Authority, 2012

3. Average Family Income, Expenditures and Savings of Families, MIMAROPA: 2012

Income	-	PhP177,000
Expenditures	-	134,000
Savings	-	43,000

Source: Philippine Statistics Office, 2012 Family Income and Expenditure Survey

4. The 13+1 Dimensions of Poverty, Oriental Mindoro, 2008

Indicator	Households		Population					
	Magnitude	Pro-portion	Magnitude			Proportion		
			Total	Male	Female	Total	Male	Female
DEMOGRAPHY								
Population	153999		675838	343995	331843	100	50.9	49.1
Average household size	4							
Children 0-5 years old	68887	44.7	102321	52580	49741	15.1	15.3	15.0
Children 6-12 years old	73955	48	127242	65217	62025	18.8	19.0	18.7
Members 13-16 years old	50518	32.8	68955	35821	33134	10.2	10.4	10.0
Members 6-16 years old	90952	59.1	196197	101038	95159	29.0	29.4	28.7
Members 10 years old and above	153885	99.9	501153	254460	246693	74.2	74.0	74.3
Members of the labor force	136651	88.7	204053	142060	61993	30.2	41.3	18.7
HEALTH AND NUTRITION								
children 0-5 year old who died	534	0.8	559	294	265	0.5	0.6	0.5
women who died due to pregnancy related-causes	38	0.2	39			0.2		
malnourished children 0-5 year old	5435	7.9	7032	3591	3441	6.9	6.8	6.9
HOUSING								
households living in makeshift housing	6504	4.2	28470	14882	13588	4.2	4.3	4.1
households who are squatters	4577	3	20176	10403	9773	3.0	3.0	2.9
WATER AND SANITATION								
households without access to safe water	39956	25.9	175117	89298	85819	25.9	26.0	25.9
households without access to sanitary toilet facility	35181	22.8	155752	81235	74517	23.0	23.6	22.5
BASIC EDUCATION								
children 6-12 years old not attending elementary	25001	33.8	29762	15727	14035	29.5	8.0	14.7
children 13-16 years old not attending high school	22411	44.4	26844	15766	11078	38.9	44.0	33.4
children 6-16 years old not attending school	21416	23.5	29287	17127	12160	14.9	17.0	12.8
INCOME AND LIVELIHOOD								
households with income below poverty threshold	95163	61.8	460250	237061	223189	68.1	68.9	67.3
households with income below food threshold	71700	46.6	358982	185356	173626	53.1	53.9	52.3
households experienced food shortage	13321	8.7	64750	33638	31112	9.6	9.8	9.4
Unemployed members of the labor force	3326	2.4	3869	2289	1580	1.9	1.6	2.5
PEACE AND ORDER								
Victims of crime	2149	1.4	4507	2583	1924	0.7	0.8	0.6

Source: Community Based Management System (CBMS) Survey, 2008

5. Municipal level small area estimates of poverty incidence, 2009 and 2012

Municipality	Poverty Incidence	
	2009	2012
Baco	44.5	22.8
Bansud	39.0	19.9
Bongabong	35.8	25.1
Bulalacao	51.5	40.0
Calapan City	23.0	7.1
Gloria	35.5	18.3
Mansalay	41.8	35.5
Naujan	38.4	20.5
Pinamalayan	31.7	17.0
Pola	37.9	29.2
Puerto Galera	23.9	11.0
Roxas	29.7	21.1
San Teodoro	33.6	14.8
Socorro	36.8	15.4
Victoria	35.2	18.0

Source: Philippine Statistics Authority – World Bank Estimation of Local Poverty in the Philippines

C. HEALTH

1. Number and Rate of Births, Total Deaths, Infant and Maternal Deaths

INDICATORS	2012		2013		2014	
	No.	Rate	No.	Rate	No.	Rate
Births	17,166	19.9	17,042	20.7	16,685	20.0
Total Deaths	3,360	3.91	2,892	3.5	2,696	3.2
Infant Deaths	143	8.3	121	7.1	99	5.9
Maternal Deaths	5	0.29	4	0.23	4	0.23

Source: Annual 2014 Field Health Service Information System

2. Access to Health Services

INDICATORS	2012	2013	2014
Proportion of children 0-5 years old who are below normal weight for their age	8.9	8.9	7.05
Proportion of children 0-5 years old who died of illness	0.40	0.11	0.06
Proportion of women who died due to pregnancy	0.29	0.23	0.23
Proportion of births attended by skilled health personnel			
a. MD/PHN/Midwives	73.27	78.92	80.00
b. Hilot/Trained Birth Attendants	25.30	19.97	18.00
c. Others	1.43	1.14	1.00

3. Morbidity: Leading Causes, Number and Rate per 100,000 Population Five Year Average (2009-2013), 2014

CAUSES	2014		5 Yr. Average	
	No.	Ratio	No.	Ratio
1. AURI	26,219	3197	24,732	3016
2. Bronchitis	4,295	524	2,020	246
3. Hypertension	3,531	431	2,450	299
4. Acute Gastroenteritis	3,476	424	1,522	186
5. Pneumonia	3,082	376	2,657	324
6. Wound All Forms	2,157	263	1,723	210
7. UTI	2,070	252	2,517	307
8. PTB	1,516	185	1,762	215
9. Bronchial Asthma	1,516	185	1,762	215
10. Tonsillo Pharyngitis	1,441	176	1,387	169

4. Infant Morbidity: Leading Causes, Number and Rate per 100,000 Population Five Year Average (2009-2013), 2014

CAUSES	2014		5 Yr. Average	
	No.	Ratio	No.	Ratio
1. AURIA	3,617	435.21	2,570	309.23
2. Pneumonia	559	67.26	524	63.05
3. Bronchitis	456	54.87	502	60.40
4. Acute Gastroenteritis	260	31.28	35	4.21
5. Bronchial Asthma	191	22.98	66	7.94
6. Skin Diseases	165	19.85	83	9.99
7. Malnutrition	69	8.30	179	21.54
8. Rhinitis	67	8.06	201	24.19
9. Wound all Forms	36	4.33	44	5.29
10. Eye Diseases	27	3.25	33	3.97

Source: Provincial Health Office, 2014 Annual Report

5. Mortality: Leading Causes, Number and Rate per 100,000 Population Five Year Average (200-2013), 2014

CAUSES	2014		5 Yr. Average	
	No.	Ratio	No.	Ratio
1. Diseases of the Heart	772	93	491	59
2. Pneumonia	394	47	217	26
3. Accident all Forms	305	37	96	12
4. Degenerative Diseases	292	35	230	28
5. Cancer all Forms	278	33	213	26
6. PTB	250	30	104	13
7. UTI	194	23	80	10
8. Acute Gastroenteritis	119	14	20	2
9. Hypertension	89	11	175	21
10. COPD	63	8	121	15

Source: Provincial Health Office, 2014 Annual Report

6. Infant Mortality per 100,000 Population Five Year Average (2009-2013), 2014

CAUSES	2014		5 Yr. Average	
	No.	Rate	No.	Rate
1. Acute Gastroenteritis	28	1.68	3	0.18
2. Prematurity	18	1.08	19	1.14
3. Septicemia	17	1.02	3	0.18
4. Pneumonia	15	0.90	20	1.20
5. Congenital Anomaly	9	0.54	6	0.36
6. Diseases of the Heart	8	0.48	9	0.54
7. Unknown	3	0.18	5	0.30
8. Bronchial Asthma	3	0.18	20	1.20
9. Hydrocephalus	3	0.18	5	0.30
10. Anemia	2	0.12	2	0.12

Source: Provincial Health Office, 2014 Annual Report

7. Nutritional Status

Age Group (months)	Number of Preschoolers Weighed by Nutritional Status and Sex											
	Normal			Underweight			Severely Underweight			Overweight		
	Boys	Girls	Total	Boys	Girls	Total	Boys	Girls	Total	Boys	Girls	Total
0-5	3,899	3,854	7,753	120	121	241	51	36	87	68	52	120
6-11	4,554	4,216	8,770	222	214	436	67	51	118	52	44	96
12-23	8,275	8,323	16,598	651	552	1,203	189	148	337	82	52	134
24-35	8,566	8,206	16,772	808	729	1,537	176	210	386	59	33	92
36-47	8,942	8,259	17,201	696	769	1,465	172	175	347	56	48	104
48-59	9,492	9,149	18,641	767	827	1,594	159	177	336	67	41	108
60-71	7,966	7,748	15,714	869	819	1,688	193	180	373	56	45	101
Total	51,694	49,787	101,449	4,133	4,031	8,166	1,007	977	1,984	440	315	755
% Weighed			90.30			7.27			1.76			0.67

Source: Provincial Health Office, 2014 Annual Report

8. Health Facilities and Personnel

Facilities	Number	Practitioners (government)	Number
Private Hospitals	19	Physicians	26
Government Owned Hospitals	8	Nurses	30
Private Clinics	46	Nutritionist	2
Rural Health Units	17	Medical Technologist	10
City Health Office	1	Dental Aides	-
Barangay Health Station	310	Non-Technical	34
Malaria Control Service	1	Dentists	14
Schistosomiasis Control Team Office	1	Midwives	153
Botikasa Barangay	356	Engineers/Sanitary Inspectors	19
Botikang Lalawigan	1	Active BHWs	4,278
Botikang Bayan	1		

Source: Provincial Health Office, 2014 Annual Report

D. EDUCATION

1. Facilities(SY2013-2014)

Facilities	Province	Calapan City
Educational Districts	18	3
Public Elementary Schools	419	49
National High Schools	79	9
Private Elementary Schools	49	13
Private Secondary Schools	35	6
Public Pre- Elementary Schools	411	49
Private Pre-Elementary Schools	53	16
Gov't Owned Tertiary (Vocational/Technical and Colleges)	2	1

2. Enrollment in Public and Private Schools By Level of Education (Prov'l and City)

Educational Level	2014-2015	
	Public	Private
Pre-Elementary	18,764	1,412
Elementary	124,210	4,939
Secondary	54,800	13,224

3. Performance Indicators in Public Elementary and Secondary Schools, 2013-2014

Performance Indicators	Province		Calapan City	
	Public Elementary Schools	Public Secondary Schools	Public Elementary Schools	Public Secondary Schools
Participation Rate				
Cohort Survival Rate	86.49	86.83	88.12	82.55
School Leavers Rate	2.95	4.78	2.65	6.43
Graduation Rate				
Completion Rate	85.63	84.92	86.11	79.04

Source: Department of Education (Provincial & City Division)

D. SOCIAL WELFARE SERVICES

City/Municipality	No. of Social Worker	No. of Day Care Worker	No. of Day Care Centers	No. of Children Served	No. of Registered Senior Citizens
Baco	3	31	31	946	4,120
Bansud	1	50	50	1,142	2,020
Bongabong	2	32	32	1,241	5,894
Bulalacao	1	48	48	1,085	1,200
Calapan City	8	71	71	2,526	11,743
Gloria	2	33	36	1,324	2,674
Mansalay	1	50	50	1,153	1,600
Naujan	2	77	78	1,826	5,000
Pinamalayan	1	58	58	2,094	5,233
Pola	1	26	26	868	2,159
Puerto Galera	2	16	13	601	2,018
Roxas	1	46	46	2,336	2,077
San Teodoro	2	12	13	321	800
Socorro	-	40	40	1,043	2,080
Victoria	1	36	36	897	3,500
PGOM-PSWDO					
Oriental Mindoro	28	626	628	19,403	52,118

Source: Provincial Social Welfare and Development Office, 2014

E. PROTECTIVE SERVICES

1. Crime Statistics and Protective Facilities (January 2013 to January 2014)

	No.		No.
a. Crime Statistics		c. Crime Against Property	
Crime Volume	2,512	Robbery	150
Crime Solved	1,247	Theft	322
Crime Unsolved	1,265		
Crime Solution Efficiency	50.35	d. Facilities	
Ave. Monthly Crime Rate (AMCR)	26.65	Building	6
		Serviceable Vehicles	
b. Crime Against Person		▪ Truck	1
Murder	68	▪ Patrol Jeep	20
Homicide	52	▪ Patrol Cars	8
Physical Injuries	677	▪ Motorcycles	6
Rape	120	Speed Boat	0

Source: Philippine National Police, 2014

2. Fire Prevention

City/Municipality	No. of Fire Stations	No. of Fire Trucks			No. Office Personnel
		BFP	LGU	NGO	
OPFM*	1	1			10
Baco	0	0			1
Bansud	1	1			8
Bongabong	1	1			9
Bulalacao	0	0			1
Calapan City	1	2		2	15
Gloria	1	1			8
Mansalay	0	0			1
Naujan	1	1	1		9
Pinamalayan	1	1	1		12
Pola	1	1			7
Puerto Galera	0	1			3
Roxas	1	1			9
San Teodoro	0	0			1
Socorro	0	0			2
Victoria	1	1			8
TOTAL	10	12	2	2	104

* OPFM - Office of the Provincial Fire Marshal
 Source: Bureau of Fire Protection, 2014

Financial Profile

A. INCOME CLASSIFICATION OF CITY/MUNICIPALITY

City/Municipality	Income Class
Oriental Mindoro	1 st
Baco	3 rd
Bansud	2 nd
Bongabong	1 st
Bulalacao	3 rd
Calapan City	3 rd Class Component City
Gloria	3 rd
Mansalay	2 nd
Naujan	1 st
Pinamalayan	1 st
Pola	3 rd
Puerto Galera	1 st
Roxas	2 nd
San Teodoro	4 th
Socorro	3 rd
Victoria	2 nd

Source: Provincial Treasury Office, 2014

B. ANNUAL INCOME AND BUDGET PER CITY/ MUNICIPALITY

City/ Municipality	Income [in Php]	Budget [in Php]
Baco	83,138,696.54	85,927,339.00
Bansud	98,030,659.86	118,371,734.04
Bongabong	152,970,381.56	214,592,943.08
Bulalacao	4,000,000.00	90,231,846.58
Calapan City	504,947,291.73	504,088,476.82
Gloria	94,113,740.00	95,428,158.78
Mansalay	124,287,353.62	128,1787,273.19
Naujan	186,615,605.35	186,530,808.45
Pinamalayan	160,553,035.17	176,684,413.00
Pola	43,608,447.06	78,261,543.45
Puerto Galera	120,508,909.80	132,386,755.00
Roxas	100,915,893.83	100,877,022.00
San Teodoro	73,374,038.98	79,760,690.37
Socorro	74,972,610.00	87,161,449.37
Victoria	101,486,770.92	97,860,979.95
Total	1,923,523,434.42	2,176,351,433.08

Sources: Provincial Treasury Office, Provincial Budget Office, 2014

C. INCOME AND EXPENDITURES, PROVINCIAL GOVERNMENT OF ORIENTAL MINDORO

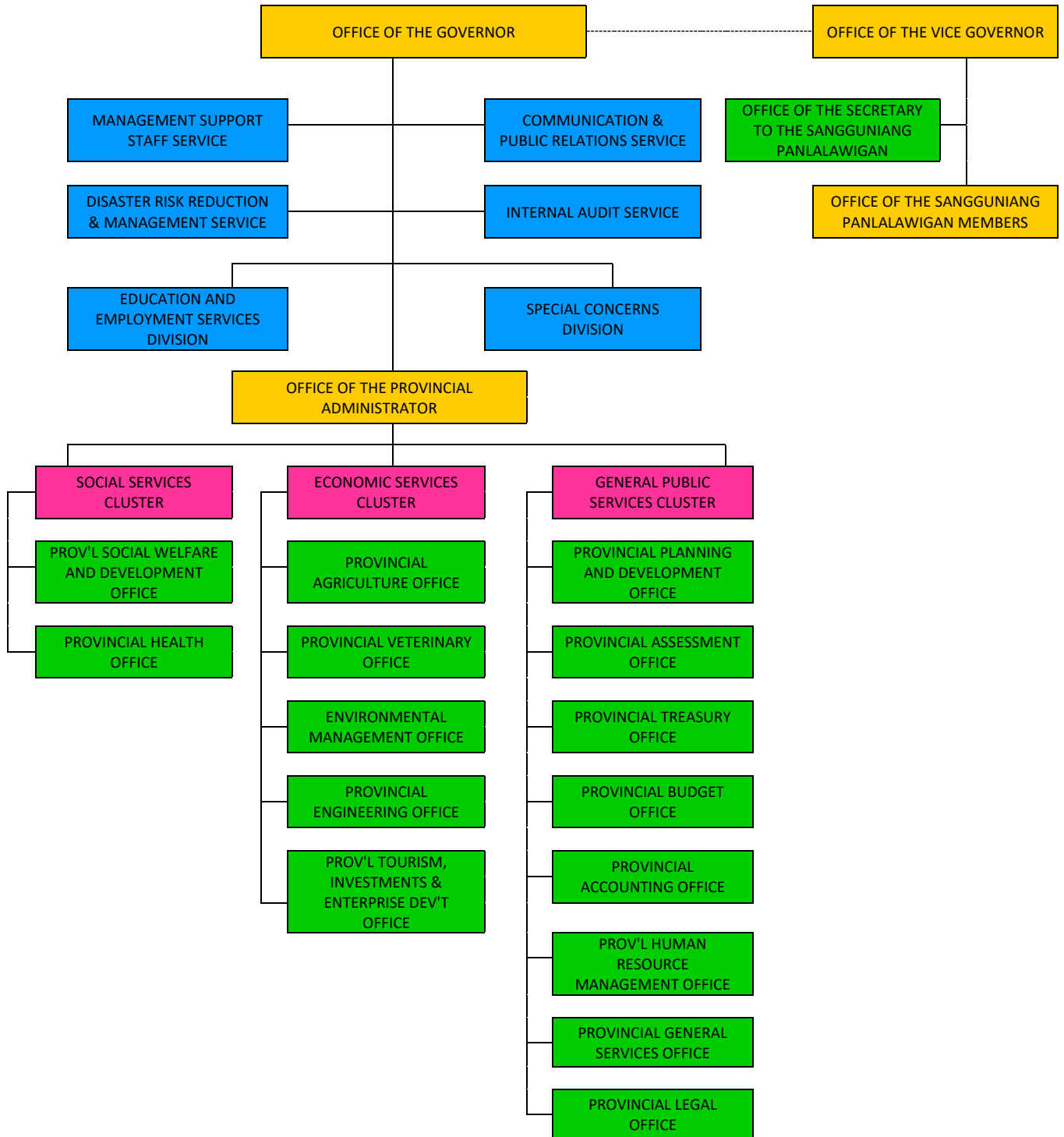
ITEM	AMOUNT (PhP)
Income and Expenditures	
Income(General & Special Educ. Fund)	1094,346,623.79
Expenditures/Obligations	884,321,852.61
Total Revenues by Source	
Tax Revenue/Special Education Tax	52,223,030.19
Permit and Licenses	844,500.00
Service Income	38,275,145.56
Business Income	35,209,123.78
Other Income (Interest Income, IRA, Misc. Income)	947,764,287.51
Income from Grants and Donations	20,030,536.75
Total Expenditures by Object	
Personal Services	361,956,741.57
MOOE	331,936,507.10
Capital Outlays	190,428,603.94

Source: *Provincial TreasuryOffice, 2014*
Provincial Accounting Office, 2014
Provincial Budget Office, 2014

Note: Income (General & Special Educ. Fund/BLOM (includes grants)
 Expenditures/Obligations (include expenses charged to Supplemental Budget, fund source of which are surplus and continuing appropriation)

Institutional Profile

A. ORGANIZATIONAL CHART OF THE PROVINCIAL GOVERNMENT OF ORIENTAL MINDORO



EXECUTIVE BRANCH

LEGISLATIVE BRANCH

C. PROVINCIAL GOVERNMENT PLANTILLA AND FILED-UP POSITION BY OFFICE (as of December 31, 2014)

Name of Office		No. of Plantilla Positions	No. of Filled-up Positions
1	Office of the Governor	1	1
	Management Support Staff Division	14	11
	Internal Audit Service Division	6	6
	Special Concerns Division	9	9
	Disaster Risk Reduction and Management Division	7	5
	Communication and Public Relations Division	13	11
	Education and Employment Services Division	7	4
2	Office of the Vice-Governor and SangguniangPanlalawigan	45	37
3	Office of the Provincial Administrator	28	21
4	Provincial Planning and Development Office	35	26
5	Provincial Treasury Office	37	29
6	Provincial Accounting Office	24	22
7	Provincial Budget Office	17	9
8	Provincial Assessment Office	30	26
9	Provincial Human Resource Management Office	20	18
10	Provincial General Services Office	40	36
11	Provincial Legal Office	12	10
12	Provincial Social Welfare and Development Office	21	18
13	Provincial Health Office		
	Technical Services	36	29
	Oriental Mindoro Provincial Hospital	175	129
	Oriental Mindoro Central District Hospital	32	17
	Naujan Community Hospital	22	20
	Bulalacao Community Hospital	20	17
	Oriental Mindoro Southern District Hospital	66	52
14	Provincial Engineering Office	120	109
15	Provincial Agriculture Office	52	45
16	Provincial Veterinary Office	21	17
17	Environment & Natural Resources Office	24	19
18	Provincial Tourism, Investment and Enterprise Development Office	20	12
Total		954	765

Source: Provincial Human Resource Management Office, 2014