

2016

Oriental Mindoro

FACTS & FIGURES



Prepared by:

PROVINCIAL PLANNING AND DEVELOPMENT OFFICE

TABLE OF CONTENTS

	Page
General Information	1
Oriental Mindoro Location Map	2
Oriental Mindoro Base Map	3
Land and Other Natural Resources	
• Land Area by City/Municipality	4
• Land Classification Statistics	5
• Geographical Zone Surfaces	5
• Mineral Resources	7
• Forest Cover	9
• Watersheds	10
• Greenhouse Gas (GHG) Emissions	10
• Coastal Resources	11
Demography	
• Population Size by City/Municipality by Census Years	16
• Actual and Projected Population and Number of Households, Growth Rate by City/Municipality	17
• Population Density	19
• Life Expectancy	20
• Projected Population by Province, MIMAROPA	21
• Urban-Rural Population	21
• Mangyan Tribes by Municipality	23
Economic Profile	
• Agriculture	24
• Tourism	30
• Commerce and Industry	34
Infrastructure and Utilities	
• Transportation	35
• Communication	39
• Water	42
• Power	46
Social Development Profile	
• Labor and Employment	50
• Poverty and Income	50
• Health	53
• Education	57
• Social Welfare Services	59
• Protective Services	61
Financial Profile	
• Income Classification of City/Municipality	63
• Annual Income and Budget per City/Municipality	63
• Income and Expenditure	64
Institutional Profile	
• Organizational Chart of the Provincial Government of Oriental Mindoro	65
• Provincial Government Personnel by Office	66
• Provincial Government Personnel by Status	66

GENERAL INFORMATION

LOCATION

Oriental Mindoro is located in Region IV-B, otherwise known as the MIMAROPA Region. It lies 45 kilometers south of Batangas and 130 kilometers south of Manila.

BOUNDARY

It is bounded by Verde Island Passage on the North; Maestro del Campo Island and Tablas Strait on the East; Semirara Island on the South; and Occidental Mindoro on the West.

TOPOGRAPHY

Oriental Mindoro has a rugged terrain and an irregular coastline. Numerous rivers and streams traverse the province but none are navigable by large vessels.

CLIMATE

The province has two climate types: Type I and Type III. Type I is characterized by two pronounced seasons, dry and wet. Type III has no pronounced season, relatively dry from November to April and wet during the rest of the year.

LAND AREA

Oriental Mindoro has a total land area of 4,364.72 square kilometers or 436,472 hectares. It represents 1.5 % of the total land area of the country and 16% of the MIMAROPA Region.

LEGAL BASIS

RA 505 (Division of Mindoro)

DATE OF APPROVAL

November 15, 1950

TWO CONGRESSIONAL DISTRICTS

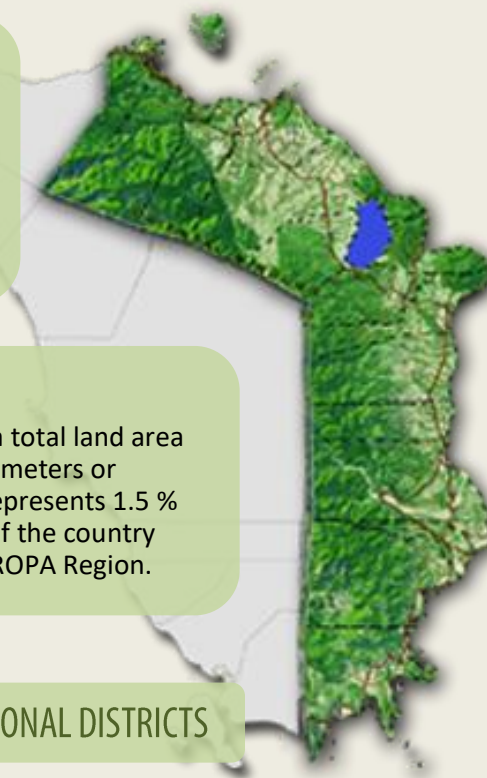
14 MUNICIPALITIES

CAPITAL

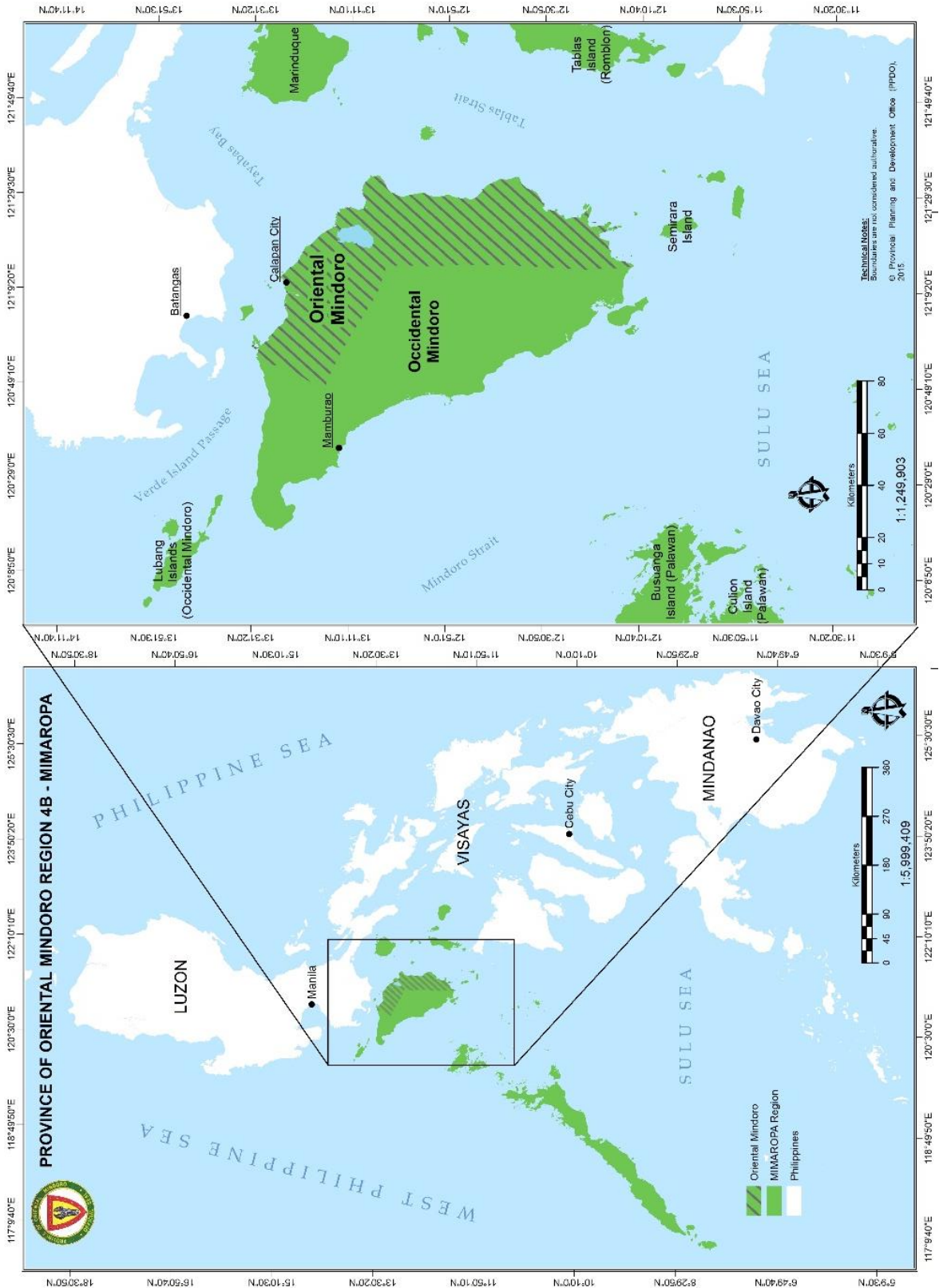
Calapan City

ONE COMPONENT CITY

426 BARANGAYS



ORIENTAL MINDORO LOCATION MAP



BASE MAP OF ORIENTAL MINDORO



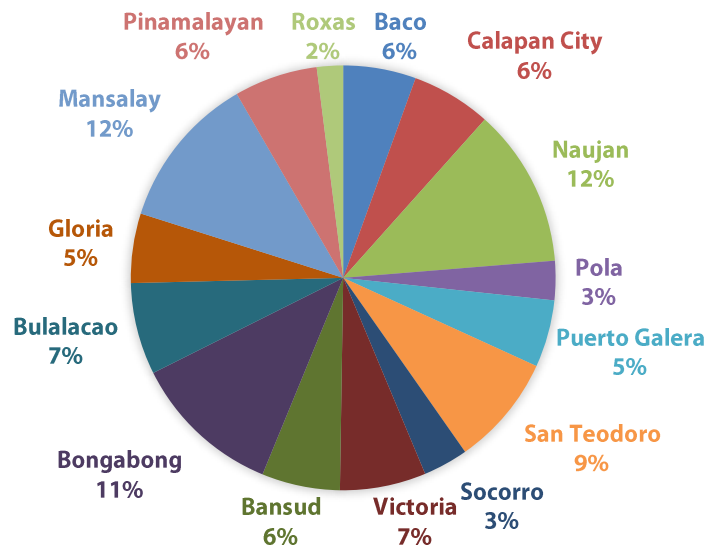
Source: Provincial Planning and Development Office



LAND AND OTHER NATURAL RESOURCES

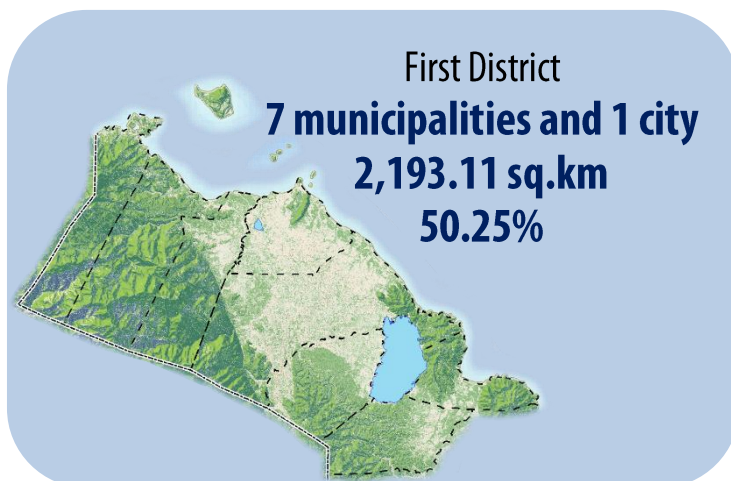
LAND AREA BY MUNICIPALITY

City/Municipality	Land Area (sq. km)	% to Total
1st District		
Naujan	528.00	12.10
San Teodoro	369.10	8.46
Victoria	286.00	6.55
Calapan City	265.20	6.08
Baco	241.70	5.54
Puerto Galera	223.51	5.12
Socorro	149.40	3.42
Pola	130.20	2.98
2nd District		
Mansalay	513.10	11.76
Bongabong	498.20	11.41
Bulalacao	305.11	6.99
Pinamalayan	277.30	6.35
Bansud	260.00	5.96
Gloria	230.80	5.29
Roxas	87.10	1.99
Oriental Mindoro	4,364.72	100.00

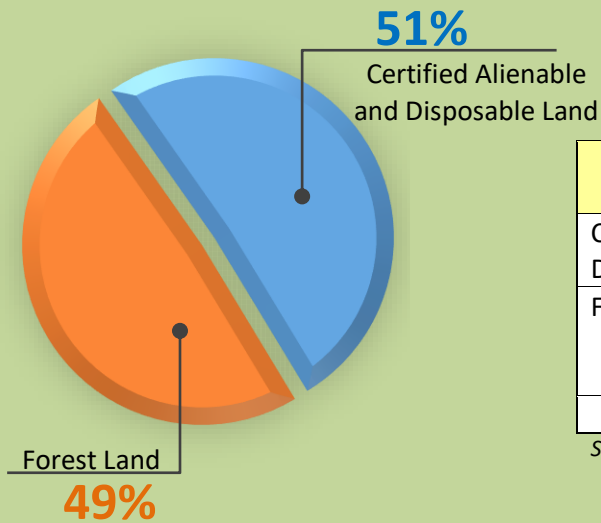


Source: Department of Environment and Natural Resources

4,364.72 sq. km
Oriental Mindoro Total Land Area



LAND CLASSIFICATION STATISTICS



Land Classification Statistics		Area (Hectares)
Certified Alienable and Disposable Land		222,895
Forest Land		213,577
Unclassified	148	
Classified	213,429	
Total		436,472

Source: Philippine Forestry Statistics, 2015



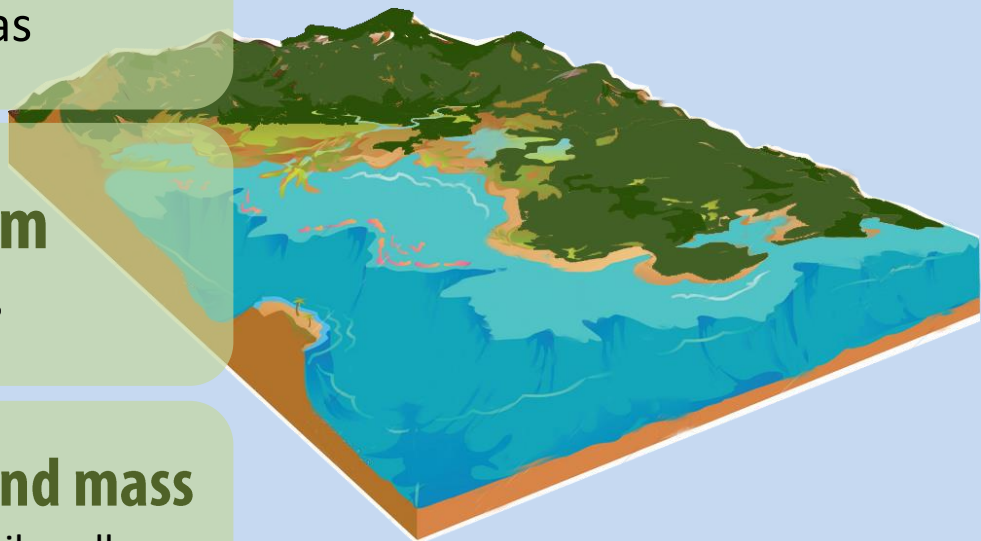
ALIENABLE AND DISPOSABLE LANDS refer to those lands of the public domain which have been the subject of the present system of classification and declared as not needed for forest purposes.

GEOGRAPHICAL ZONE SURFACES

342.45 km
Coastal Areas

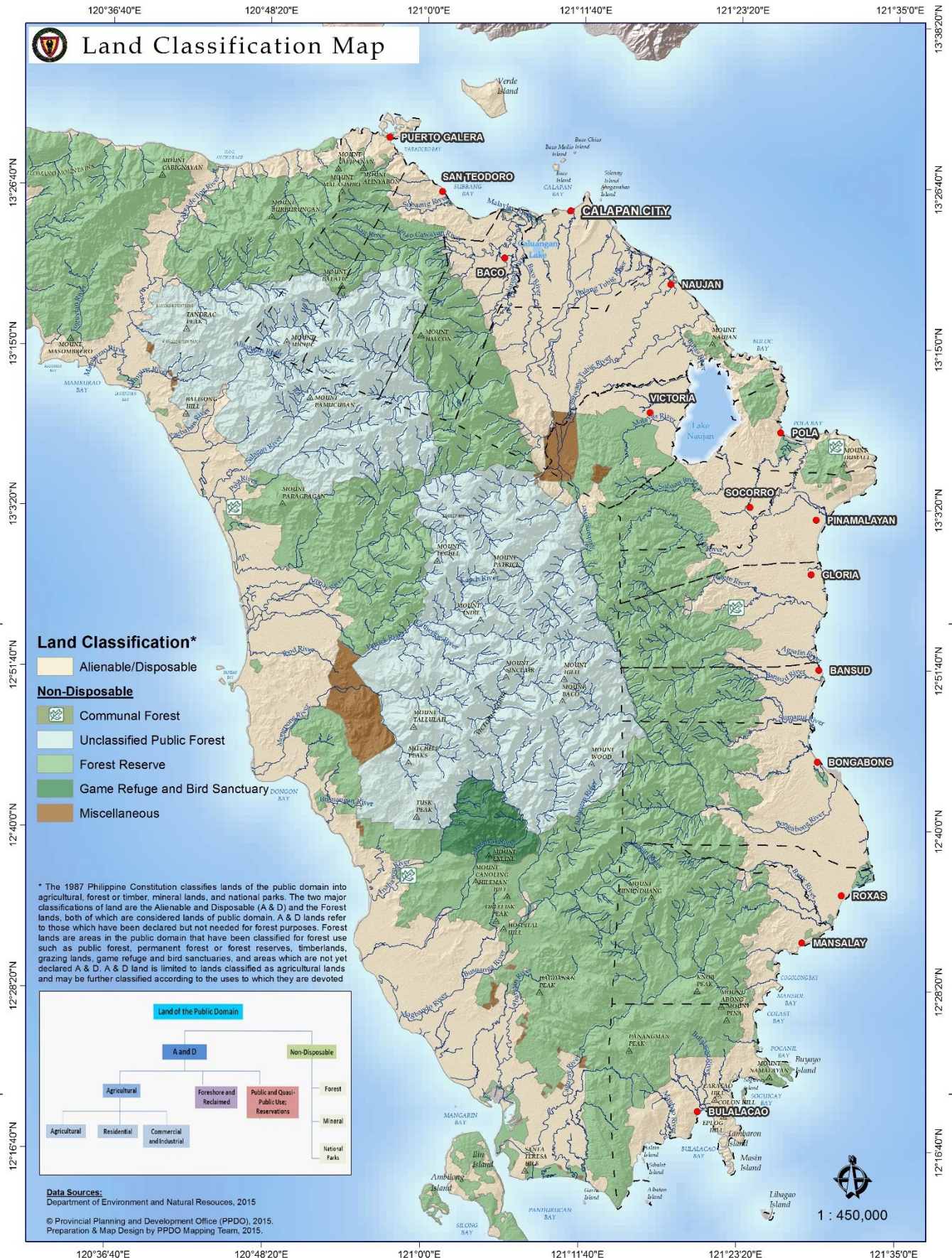
81.28 sq. km
Lake Areas

89% of its total land mass
Riparian areas, rich fertile valleys and mountainous areas



Source: Provincial Environment and Natural Resources Office

LAND CLASSIFICATION MAP

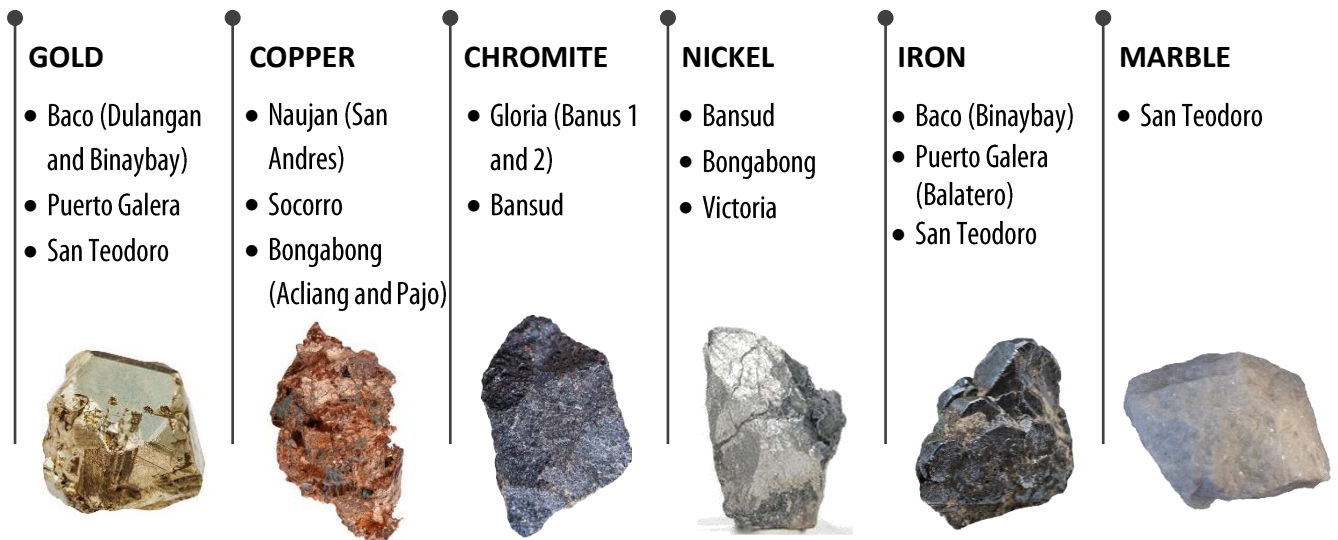


Source: Provincial Planning and Development Office



MINERAL RESOURCES

Location of Metallic Mineral Resources




Source: Mines & Geosciences Bureau, 2011 and Environment and Natural Resources Office, 2016

Non-Metallic Minerals

City/Municipality	Total [cu.m.]	Total Value (Php)	City/Municipality	Total [cu.m.]	Total Value (Php)
First District			Second District		
Baco	22,000	440,457.50	Bansud	2,000	32,050.00
Calapan City	30,250	414,482.50	Bongabong	200,250	3,188,530.00
Naujan	446,220	6,046,418.00	Bulalacao	250	11,720.00
Socorro	4,500	106,725.00	Gloria	51,000	762,567.50
Victoria	76,000	1,133,840.00	Mansalay	4,250	93,406.50
			Pinamalayan	34,750	454,857.50
			Roxas	51,250	705,637.50
1st District Total	578,970	8,141,923.00	2nd District Total	343,750	5,248,769.00
Oriental Mindoro				922,720	13,390,692.00

Source: Provincial Treasury Office, 2016



A MINERAL RESOURCE is a concentration or occurrence of material of intrinsic economic interest in or on the earth's crust in such form, quality and quantity that there are reasonable prospects for eventual economic extraction.

Geology and Mineral Resources Map



Source: Provincial Planning and Development Office



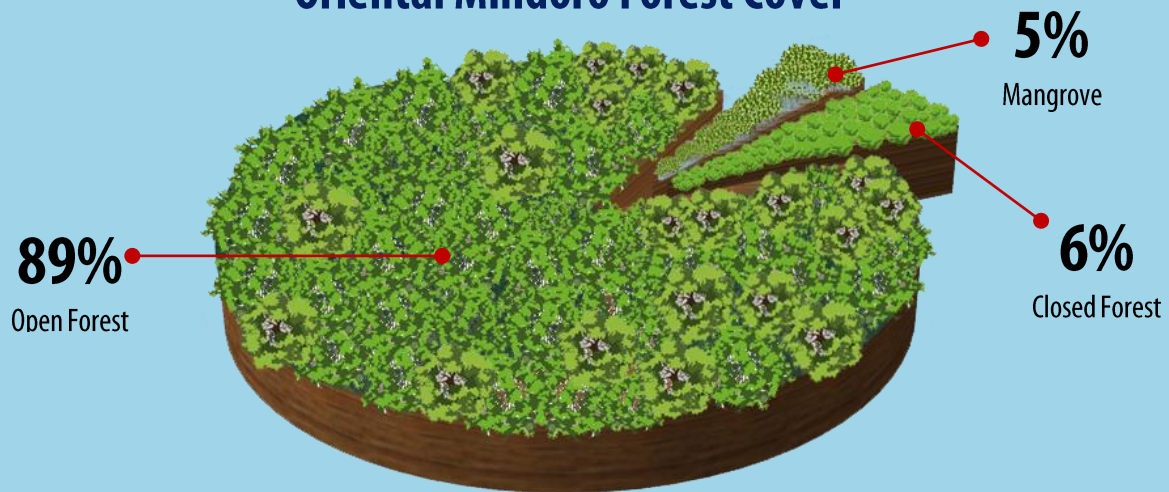
FOREST COVER

Forest Cover of MIMAROPA (By Province, Area in Hectares) December 31, 2010

Province	Closed Forest	Open Forest	Mangrove	Total Forest
Marinduque	-	12,255	2,877	15,132
Occidental Mindoro	1,968	101,424	1,594	104,986
Oriental Mindoro	5,301	77,731	3,949	86,981
Palawan	86,877	541,590	63,821	692,288
Romblon	3,664	11,529	1,084	16,277
MIMAROPA	97,810	744,530	73,324	915,664

Source: DENR-Forest Management Bureau
<http://forestry.denr.gov.ph/index.php/forest-cover-region4b>

Oriental Mindoro Forest Cover



Forests can be 'CLOSED' or 'OPEN' depending on the amount of cover provided by the tree canopy over the forest floor. An example of a closed forest is a rainforest, where branches and foliage of trees meet. Woodlands have a more open canopy with trees spaced farther apart.



Watersheds, Oriental Mindoro

Name of Watershed	Area (Hectares)
Malaylay River Watershed	33,630.43
Baco Bukayao River Watershed	22,189.80
Magasawang Tubig River Watershed	9,204.45
Pagbahan River Watershed	24,296.00
Lumangbayan River Watershed	36,401.57
Bukayao River Watershed	35,270.48
Magasawang Tubig River Watershed	43,700.68
Pula River Watershed	19,068.45
Bongabong River Watershed	46,451.03
Balete River Watershed	11,770.52
Agsalin Banus River Watershed	13,024.10
Bansud River Watershed	5,786.97
Sumagui Tangon River Watershed	11,958.90
Bugsanga River Watershed	50,931.54
Baroc River Watershed	17,885.61
Mansalay River Watershed	4,082.86
Labangan River Watershed	10,887.61
Caguray River Watershed	7,353.54
Total	403,894.55

Source: Provincial Environment and Natural Resources Office (PENRO), 2016

GREENHOUSE GAS (GHG) EMISSIONS

Oriental Mindoro Forestry and Other Land-Use Change Data for GHG emissions

Emission Type	Emission Source	Annual Total
Wood Products Harvesting	Charcoal (cu.m.)	442,507.00
Wood Products Harvesting	Fuelwood (cu.m.)	1,297,120.00
Wood Products Harvesting	Construction (cu.m.)	6,973,691.00
Changes in the use of forest lands	Forest converted to Agriculture (ha)	4,924.36
Changes in the use of forest lands	Forest converted to grassland (ha)	7,415.68
Changes in the use of forest lands	Forest left as barren (ha)	1,417.04

Source: Freedom-WorldFish, 2015

Oriental Mindoro Forestry and Other Land-Use Change Data for GHG removals

Removal Type	Removal Source	Annual Total (ha)
Remaining Forestland	Protection Forest/Old Growth/Mossy/Pine/Submarginal Mangrove	3,086.01
Remaining Forestland	Secondary Growth	104,233.78
Remaining Forestland	Brushland - for wood	56,512.90
Remaining Forestland	Grassland	56,414.64
Remaining Forestland	Tree Plantation	48,541.51
Land Use Change	Grassland to Forest	1,317.51
Land Use Change	Barren to Forest land	879.01
Land Use Change	Wetlands to Forestland	815.30
Land Use Change	Settlement to Forestland	72.00

Source: Freedom-WorldFish, 2015



COASTAL RESOURCES

Major Species Commonly Caught

- Tanigue, tambakol, malasugi, mamsa, lapu-lapu, galunggong, tuna, herrings, hasa-hasa, kalapato, caranx, dalagang-bukid, alumahan, bisugo, samaral, anchovies, sardines

Minor Species other than Fish

- Squid, shrimp, prawn, octopus, mudcrab, shells, lobster, cuttlefish, mussel, oyster, blue crabs, seaweed and sea cucumber

Percent of Marine Protected Areas to Total Area of Municipal Waters

Municipality	Municipal Waters (has.)	MPA (has.)	MPA Percentage Share
1st District			
Baco	16,130.60	152.53	0.95
Calapan City	26,526.70	186.34	0.70
Naujan	29,703.10	123.27	0.42
Pinamalayan	30,736.00	59.24	0.19
Pola	31,230.10	248.33	0.80
Puerto Galera	13,892.70	4,845.80	34.88
San Teodoro	4,559.27	112.48	2.47
2nd District			
Bongabong	32,016.50	21.68	0.07
Bulalacao	58,481.40	238.04	0.41
Gloria	13,762.70	174.43	1.27
Mansalay	24,114.40	289.79	1.20
Roxas	17,093.00	30.00	0.18
ORIENTAL MINDORO	311,555.07	6,481.93	2.08

Source: Provincial Agriculture Office, 2016

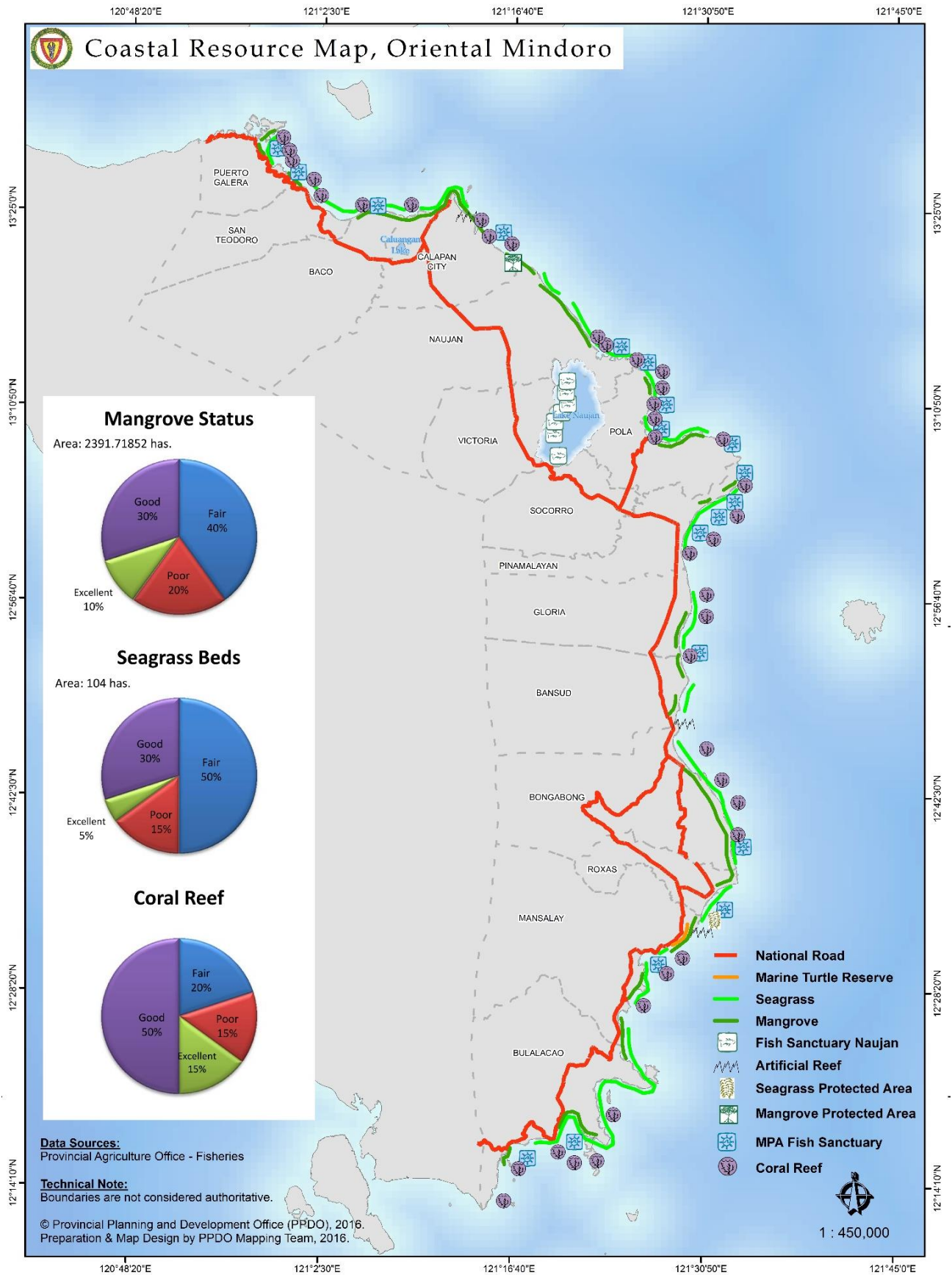


MARINE PROTECTED AREAS (MPA) are protected areas of seas, oceans, estuaries or large lakes. MPAs restrict human activity for a conservation purpose, typically to protect natural or cultural resources.

6,481.93 hectares

is the total area of MPAs
in Oriental Mindoro

Coastal Resources Map



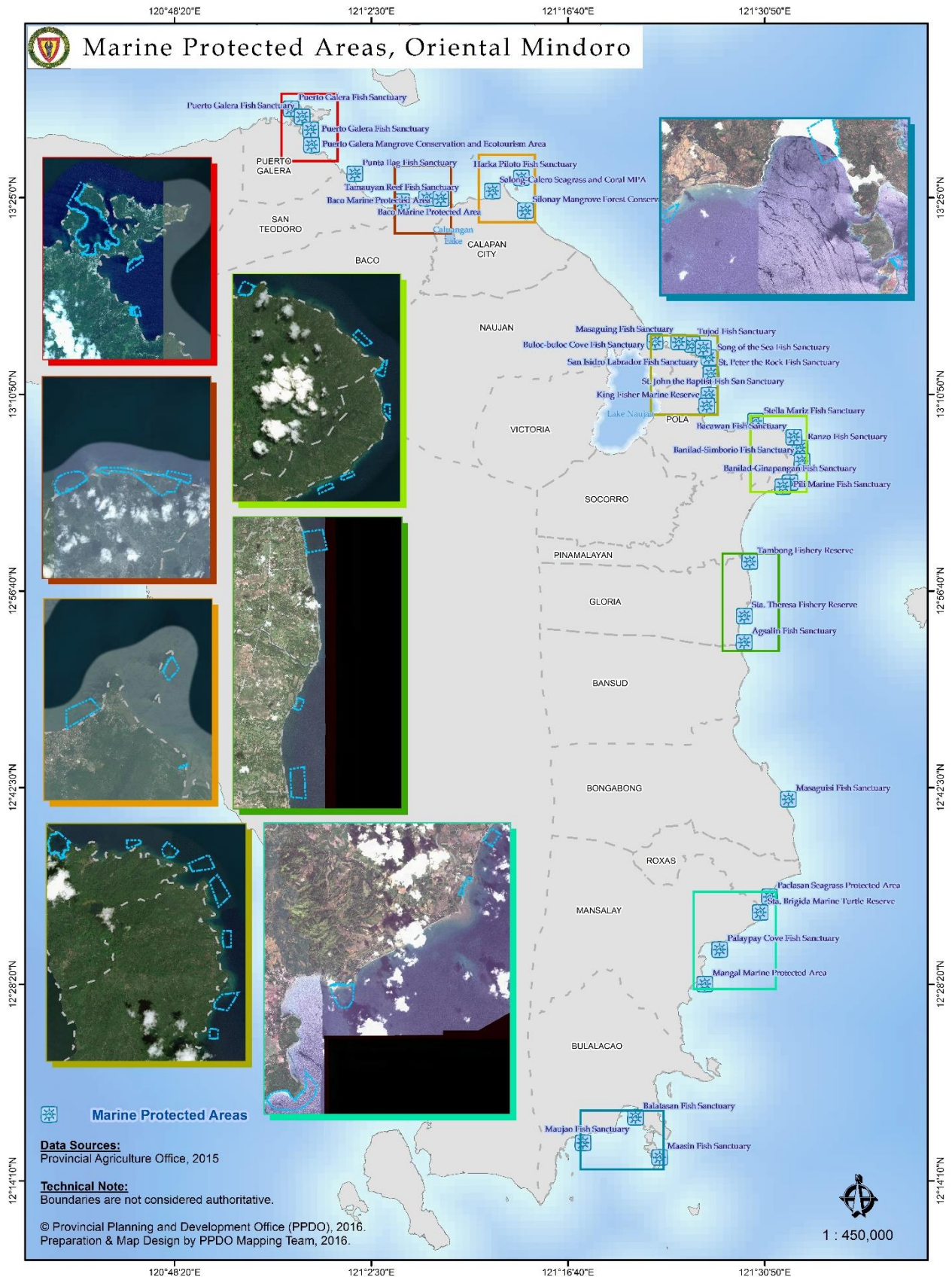
Established Marine Protected Areas

Name of MPA	Location	Year Established	Habitats protected	Estimated Area (Has.)
PUERTO GALERA				
1. Puerto Galera Fish Sanctuary	12 coastal Brgys. NTZ at San Antonio	2006	Coral reefs, seagrasses	4,828 .00 (250 NTZ)
2. Puerto Galera Mangrove Conservation and Ecotourism Area	Dulangan and Tabinay	2015	Mangrove, Coral Reef, Seagrass	17.80
SAN TEODORO				
3. Punta Ilag Fish Sanctuary	Ilag	2009	Coral reef	23.10
4. Tamauyan Reef Fish Sanctuary	Tacligan	2006 (formerly under SB Ordinance of Baco)	Coral reef & seagrass	89.37
		2014 (under LGU-San Teodoro)		
BACO				
5. Baco Marine Protected Area	San Andres and Pulantubig	2015	Mangrove, seagrass and corals	152.53
CALAPAN CITY				
6. Harka Piloto Fish Sanctuary	Lazareto	2003	Coral reef	37.44
7. Silonay Mangrove Conservation Area and EcoPark	Silonay	2010	Mangrove Forest	41.30
8. Salong-Calero Seagrass and Corals MPA	Salong and Calero	2016	Seagrass and Coral Reef	107.60
NAUJAN				
9. Masaguig Fish Sanctuary	Masaguig	2010	Coral reef	16.39
10. Tujod Fish Sanctuary	Sitio Tujod, Herrera	2006	Coral reef	29.88
11. Buloc-buloc Cove MPA	Sitio Buloc-buloc, Montemayor	2016	Coral reef	77.00
POLA				
12. Bacawan Fish Sanctuary	Bacawan, Pola	2006	Coral reef	23.44
13. San Isidro Labrador Fish Sanctuary	Buhay Na Tubig, Pola	2016	Coral Reef	45.00
14. St. John the Baptist Fish Sanctuary	Sitio Curtihan, Puting Cacao, Pola	2010	Coral reef; seagrass	49.38
15. St. Peter the Rock Fish Sanctuary	Tagumpay, Pola	2010	Coral reef	25.11
16. Stella Mariz Fish Sanctuary	Sitio Dayap, Calima, Pola	2013	Coral reef	30.12
17. Kingfisher Fishery Reserve	Tiguihan, Pola	2013	Coral reef	14.66
18. Song of the Sea Fish Sanctuary	Misong, Pola	2013	Coral reef	60.62

Name of MPA	Location	Year Established	Habitats protected	Estimated Area (Has.)
PINAMALAYAN				
19. Ranzo Fish Sanctuary	Ranzo	2006	Coral reef	24.16
20. Banilad- Simborio Fish Sanctuary	Sitio Simborio, Banilad	2010	Coral reef	10.41
21. Banilad- Guinapangan Fish Sanctuary	Sitio Guinapangan, Banilad	2010	Coral reef	10.28
22. Pili Fish Sanctuary	Sitio, Bulaklak, Pili	2010	Coral reef	14.39
GLORIA				
23. Tambong Fishery Reserve	Tambong	2013	Seagrass	80.40
24. Sta. Theresa Fish Sanctuary	Sta. Theresa	2013	Coral reef	13.90
25. Agsalin Fish Sanctuary	Agsalin	2004	Coral Reef, seagrass	80.13
BONGABONG				
26. Masaguisi Fish Sanctuary	Masaguisi	2006	Coral reef	21.68
ROXAS				
27. Paclasan Fish Sanctuary	Paclasan	2012	Seagrass	30.00
MANSALAY				
28. Palaypay Cove Fish Sanctuary	Palaypay Cove and Balanga Point, B. Del Mundo	2006	Mangrove, seagrass, coral reef	82.79
29. Alegria Sea Turtle Habitat	Tikling Point, Sta. Brigida	2008	Sea turtle nesting ground	1.00
30. Mangal Marine Protected Area	Don Pedro and Cabalwa	2014	Coral reef	206.00
BULALACAO				
31. Balatasan Fish Sanctuary	Balatasan	1999	Coral reef	178.98
32. Maujao Fish Sanctuary	Maujao	2009	Coral reef	40.00
33. Maasin Fish Sanctuary	Maasin	2014	Coral reef	19.06
Total Area of MPAs				6,481.93

Source: Provincial Agriculture Office-Fisheries & CRM Division, 2016

Marine Protected Areas Map



Source: Provincial Planning and Development Office

DEMOGRAPHY



844,059
Oriental Mindoro
Population (2015)

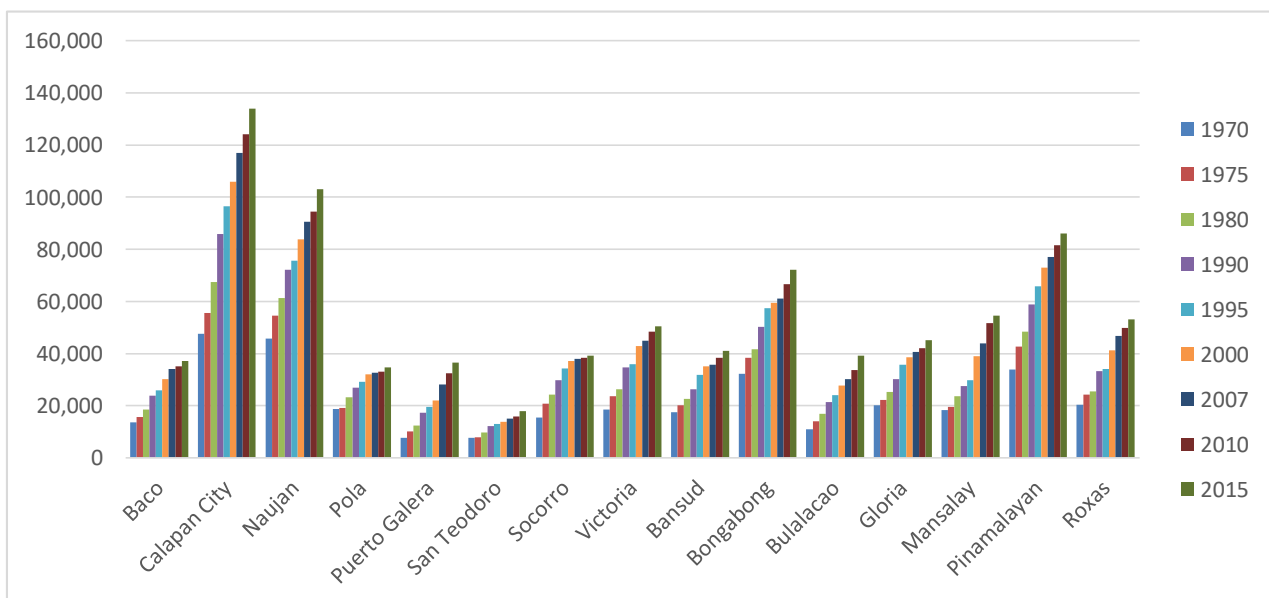


*Source: Philippine Statistics Authority
2015 Census of Population*

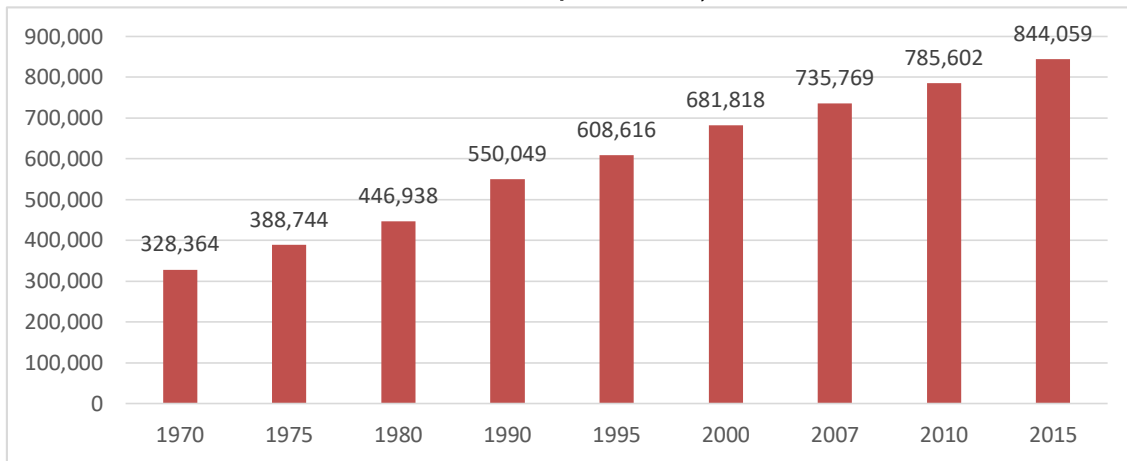
Population Size by City/Municipality by Census Years

CITY/ MUNICIPALITY	CENSUS YEARS								
	1970	1975	1980	1990	1995	2000	2007	2010	2015
1st District									
Baco	13,687	15,738	18,607	23,800	25,915	30,167	34,127	35,060	37,215
Calapan City	47,532	55,608	67,370	85,898	96,506	105,910	116,976	124,173	133,893
Naujan	45,685	54,641	61,216	72,203	75,726	83,892	90,629	94,497	102,998
Pola	18,789	19,072	23,188	26,833	29,156	31,938	32,635	32,984	34,701
Puerto Galera	7,659	10,129	12,306	17,200	19,485	21,925	28,035	32,521	36,606
San Teodoro	7,721	7,862	9,707	12,223	12,983	13,806	15,039	15,810	17,904
Socorro	15,456	20,868	24,332	29,806	34,182	37,176	38,052	38,348	39,099
Victoria	18,499	23,568	26,225	34,760	35,828	42,873	44,932	48,308	50,492
2nd District									
Bansud	17,492	20,095	22,614	26,225	31,901	35,032	35,664	38,341	40,992
Bongabong	32,167	38,358	41,719	50,213	57,403	59,477	61,127	66,569	72,073
Bulalacao	10,857	14,038	16,926	21,316	24,047	27,698	30,188	33,754	39,107
Gloria	20,147	22,249	25,291	30,102	35,771	38,667	40,561	42,012	45,073
Mansalay	18,395	19,544	23,548	27,515	29,765	39,041	43,974	51,705	54,533
Pinamalayan	33,936	42,701	48,431	58,777	65,903	72,951	77,119	81,666	86,172
Roxas	20,342	24,273	25,458	33,178	34,045	41,265	46,711	49,854	53,201
ORIENTAL MINDORO	328,364	388,744	446,938	550,049	608,616	681,818	735,769	785,602	844,059

Source: Philippine Statistics Authority, 2016



Oriental Mindoro Population, by Census Years



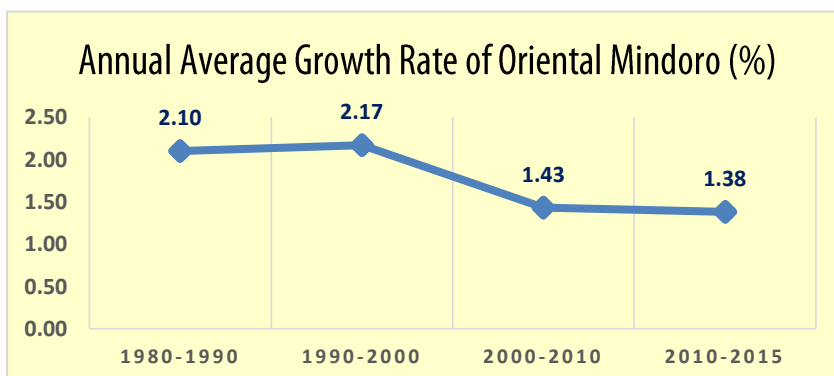
Source: Philippine Statistics Authority, 2016

Actual and Projected Population and Number of Households, Growth Rate by City/Municipality

Municipality	2010		2015 (Actual)		2025 (Projected)		Growth Rate	
	Total Pop'n	No. of HHs	Total Pop'n	No. of HHs	Total Pop'n	No. of HHs	2000-2010	2010-2015
1st District								
Baco	35,060	7,483	37,215	8,326	41,682	9,334	1.51	1.14
City of Calapan	124,173	27,242	133,893	30,734	154,472	35,732	1.60	1.44
Naujan	94,497	21,479	102,998	23,348	121,312	27,525	1.20	1.65
Pola	32,984	7,582	34,701	8,192	38,218	9,023	0.32	0.97
Puerto Galera	32,521	7,661	36,606	8,322	45,863	10,511	4.02	2.28
San Teodoro	15,810	3,508	17,904	4,058	22,696	5,150	1.36	2.40
Socorro	38,348	8,850	39,099	9,108	40,570	9,464	0.31	0.37
Victoria	48,308	10,485	50,492	11,208	54,952	12,213	1.20	0.85
2nd District								
Bansud	38,341	8,459	40,992	9,250	46,552	10,539	0.91	1.28
Bongabong	66,569	14,758	72,073	16,753	83,809	19,525	1.13	1.52
Bulalacao	33,754	7,427	39,107	8,542	51,746	11,321	2.00	2.84
Gloria	42,012	9,400	45,073	10,366	51,541	11,870	0.83	1.35
Mansalay	51,705	10,193	54,533	11,286	60,358	12,502	2.85	1.02
Pinamalayan	81,666	18,043	86,172	19,551	95,471	21,717	1.13	1.03
Roxas	49,854	10,386	53,201	11,719	60,178	13,298	1.91	1.24
ORIENTAL MINDORO	785,602	172,956	844,059	190,763	968,045	219,422	1.43	1.38

Source: Philippine Statistics Authority, 2010 and 2015 Census of Population

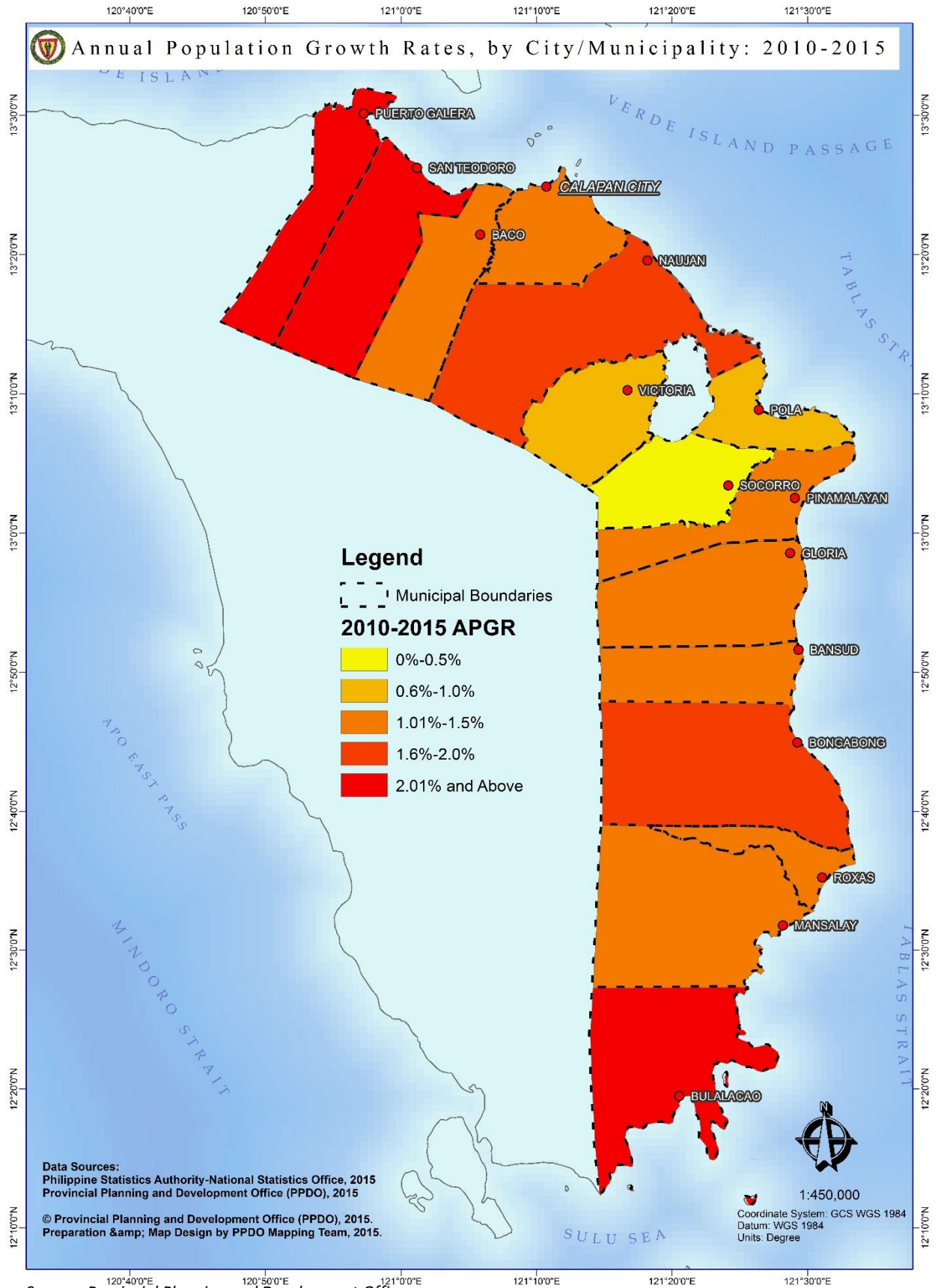
Projected population computed using the formula prescribed in the Provincial Physical Framework Plan Training Program Learning Materials from National Economic Development Authority (1996); Projected number of households computed using PSA's Average Household Size. Figures do not add up to totals (geometric formula used in projections)



Source: Philippine Statistical Yearbook, 2006, 2015 and 2016

GROWTH RATE - indicates how fast a population increases or decreases as a result of the interplay of births, deaths, and migration during a given period of time.

Annual Population Growth Rate, by City/Municipality, 2010-2015



Household Population by Sex by City/Municipality, Oriental Mindoro, 2007, 2010 and 2015

MUNICIPALITY	2007			2010			2015
	Total HH Population	Male	Female	Total HH Population	Male	Female	Total HH Population
1st District							
Baco	34,127	17,654	16,473	35,060	18,030	17,030	37,182
Calapan City	116,399	58,463	57,936	123,480	62,076	61,404	132,864
Naujan	90,580	46,674	43,906	94,448	48,492	45,956	102,903
Pola	32,635	16,814	15,821	32,984	16,831	16,153	34,699
Puerto Galera	27,997	14,301	13,696	32,408	16,539	15,869	36,311
San Teodoro	15,027	7,724	7,303	15,801	8,070	7,731	17,882
Socorro	38,022	19,519	18,503	38,336	19,448	18,888	39,044
Victoria	44,932	23,211	21,721	48,308	24,664	23,644	50,432
2nd District							
Bansud	35,543	18,238	17,305	38,223	19,488	18,735	40,859
Bongabong	61,115	31,133	29,982	66,568	33,972	32,596	71,909
Bulalacao	30,188	15,522	14,666	33,753	17,438	16,315	39,044
Gloria	40,527	20,598	19,929	42,010	21,277	20,733	45,011
Mansalay	43,974	22,615	21,359	51,705	26,502	25,203	54,487
Pinamalayan	76,980	39,203	37,777	81,552	41,288	40,264	85,948
Roxas	46,614	23,603	23,011	49,739	25,256	24,483	53,033
ORIENTAL MINDORO	734,660	375,272	359,388	784,375	399,371	385,004	841,608

Source: Philippine Statistics Authority, Census of Population, 2007, 2010 and 2015

Note: No available disaggregated data for 2015

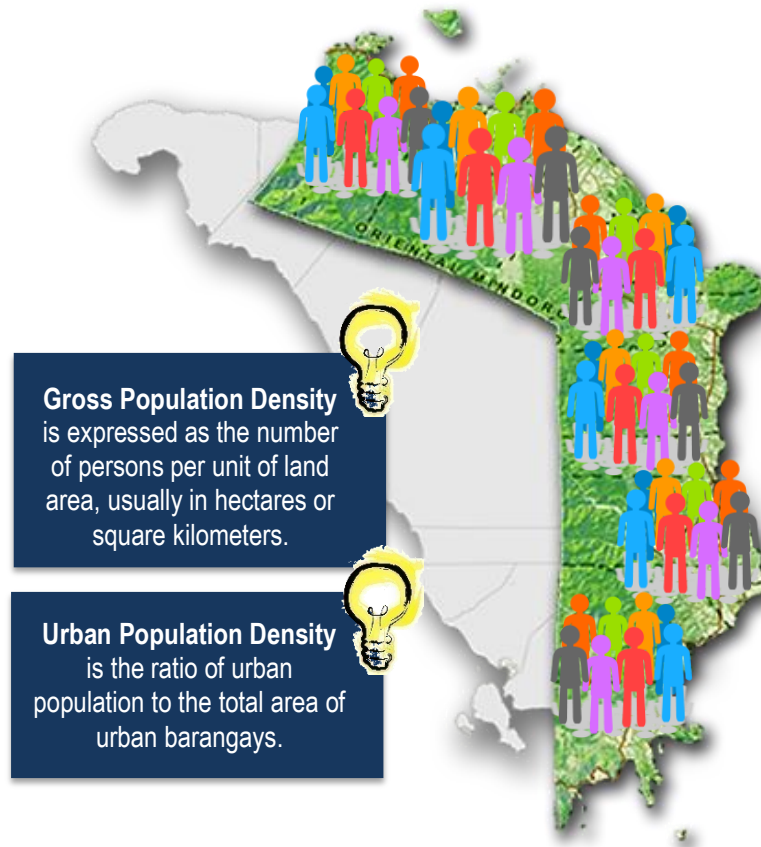
Population Density

Municipality	Gross Population Density (per sq.km.)		Urban Population Density (per sq.km.)		Estimated Population Density (per sq.km.)
	2010	2015	2010	2015	2025
1st District					
Baco	145	154	655	638	172
Calapan City	468	505	4,091	2,382	582
Naujan	179	195	460	1,373	230
Pola	253	267	21,700	12,573	294
Puerto Galera	146	164	291	310	205
San Teodoro	43	49	3153	2,579	61
Socorro	257	262	249	2,145	272
Victoria	169	177	489	919	192
2nd District					
Bansud	147	158	1149	747	179
Bongabong	134	145	325	3,028	168
Bulalacao	111	128	119	629	170
Gloria	182	195	527	581	223
Mansalay	101	106	270	215	118
Pinamalayan	295	311	1010	2,703	344
Roxas	572	611	1272	1,292	691
Oriental Mindoro	180	193	467	819	222

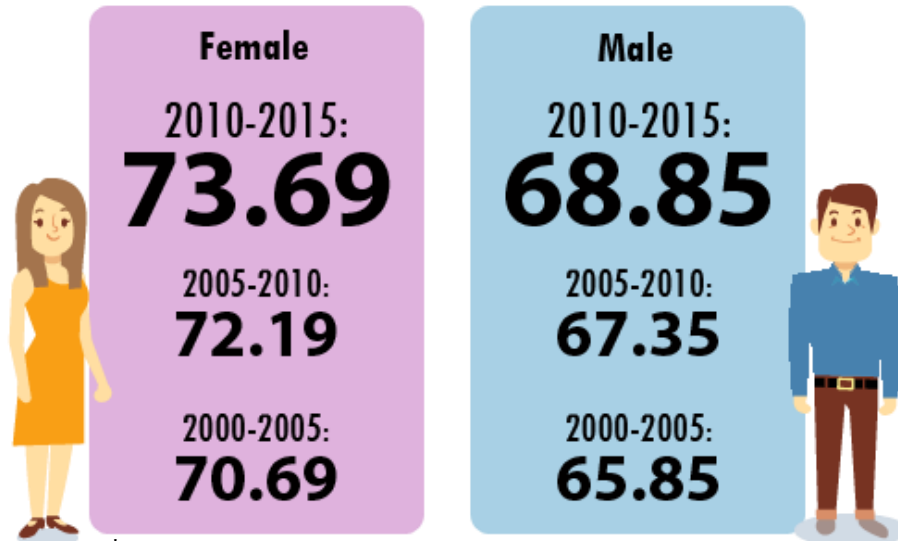
Source: Philippine Statistics Authority/ Provincial Planning and Development Office, 2010 and 2015

Note: Figures for 2025 were derived using the formula prescribed in the PFPF Training Program Learning Materials from National Economic Development Authority (1996).





Life Expectancy at Birth*



*In years; medium assumption; 2000 Census-Based National, Regional and Provincial Projections
 Source: PSA Quickstat, January 2017

LIFE EXPECTANCY AT BIRTH - reflects the overall mortality level of a population. It summarizes the mortality pattern that prevails across all age groups - children and adolescents, adults and the elderly. It is the average number of years that a newborn is expected to live if current mortality rates continue to apply.



Projected Population by Province, MIMAROPA, Philippines, 2016, 2020, 2025

Province	Actual Population		Growth Rate	Population Projection		
	2010	2015		2016	2020	2025
Occidental Mindoro	452,971	487,414	1.40	494,238	522,502	560,115
Oriental Mindoro	785,602	844,059	1.38	855,707	903,929	968,045
Marinduque	227,828	234,521	0.55	235,811	241,042	247,744
Romblon	283,930	292,781	0.59	294,508	301,521	310,521
Palawan	771,667	849,469	1.84	865,099	930,550	1,019,369
Puerto Princesa City	222,673	255,116	2.62	261,800	290,334	330,414
MIMAROPA	2,744,671	2,963,360	1.47	3,006,921	3,187,665	3,428,949
Philippines	92,337,852	100,981,437	1.72	102,718,318	109,969,767	119,758,145

Source: Philippine Statistics Authority, 2010 and 2015 Census of Population

Note: Projected population computed using the formula prescribed in the Provincial Physical Framework Plan

Training Program Learning Materials from National Economic Development Authority (1996)

Figures do not add up to totals (geometric formula used in projections)

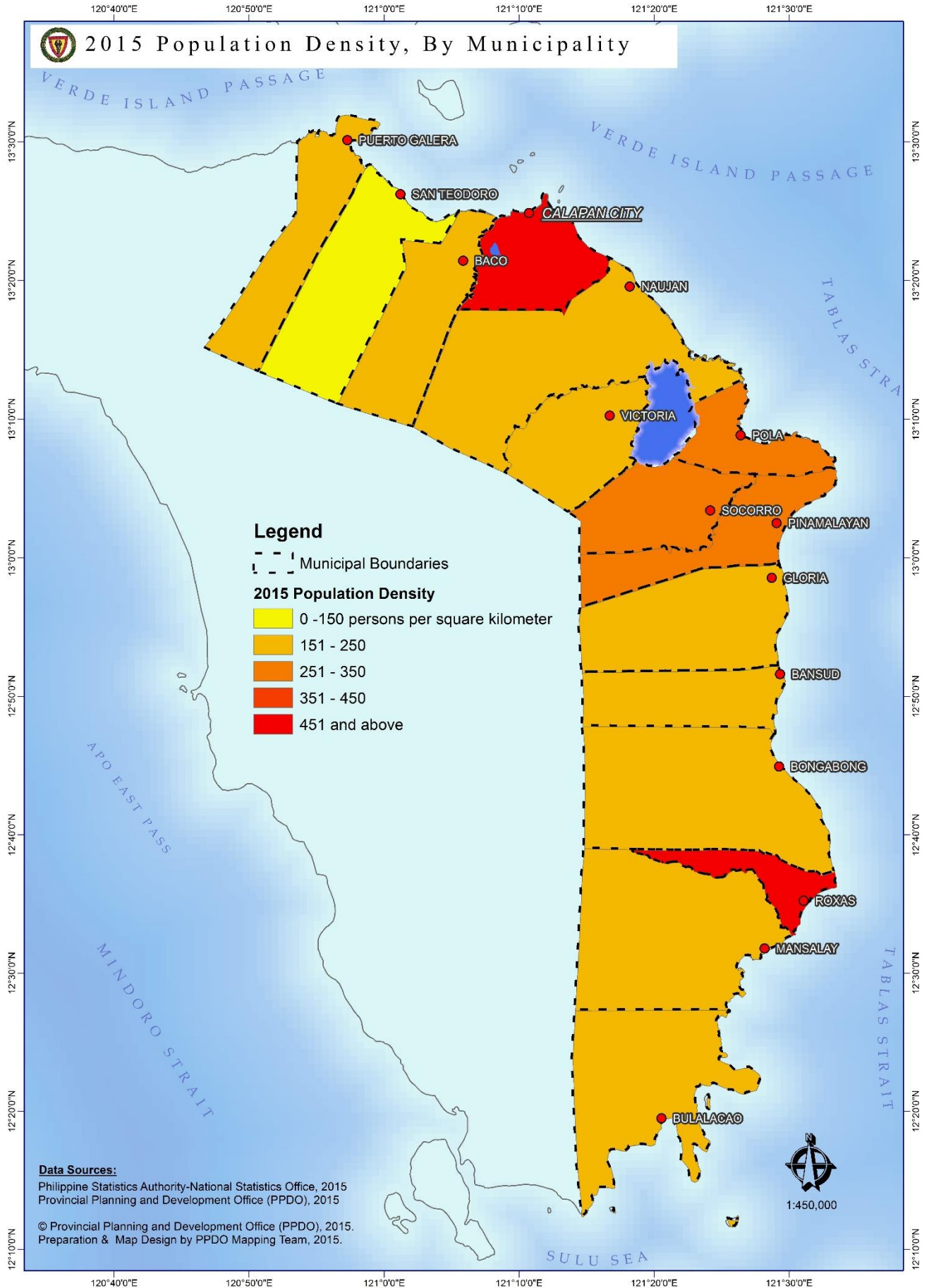
Urban-Rural Population, 2010 and 2015

City/ Municipality	No. of Barangays			Population, 2010				Population, 2015			
	Urban	Rural	Total	Urban	%	Rural	%	Urban	%	Rural	%
1st District											
Baco	1	26	27	2,846	8.12	32,214	91.88	3,021	8.12	34,194	91.88
Calapan City	23	39	62	18,131	14.60	106,042	85.40	59,309	44.30	74,584	55.70
Naujan	3	67	70	9,040	9.57	85,457	90.43	2,405	2.33	100,593	97.67
Pola	2	21	23	1,085	3.29	31,899	96.71	1,031	2.97	33,670	97.03
Puerto Galera	3	10	13	11,577	35.60	20,944	64.40	12,330	33.68	24,276	66.32
San Teodoro	1	7	8	1,734	10.97	14,076	89.03	1,868	10.43	16,036	89.57
Socorro	4	22	26	8,295	21.63	30,053	78.37	5,307	13.57	33,792	86.43
Victoria	5	27	32	16,212	33.56	32,096	66.44	12,082	23.93	38,410	76.07
2nd District											
Bansud	3	10	13	14,181	36.99	24,160	63.01	14,954	36.48	26,038	63.52
Bongabong	5	31	36	1,626	2.44	64,943	97.56	10,869	15.08	61,204	84.92
Bulalacao	2	13	15	10,624	31.47	23,130	68.53	6,783	17.34	32,324	82.66
Gloria	6	21	27	12,924	30.76	29,088	69.24	14,238	31.59	30,835	68.41
Mansalay	3	14	17	13,620	26.34	38,085	73.66	17,120	31.39	37,413	68.61
Pinamalayan	7	30	37	27,803	34.04	53,863	65.96	22,080	25.62	64,092	74.38
Roxas	5	15	20	18,151	36.41	31,703	63.59	22,583	42.45	30,618	57.55
Oriental Mindoro	73	353	426	167,849	21.37	617,753	78.63	205,980	24.40	638,079	75.60

Source: Philippine Statistics Authority, 2010 and City/Municipal Planning and Development Office, 2016

Note: Details may not add up to totals due to rounding

2015 Population Density, Oriental Mindoro



Source: Provincial Planning and Development Office



Mangyan Tribes by Municipality

Municipality	Tribes	Municipality	Tribes
First District		Second District	
Puerto Galera	Iraya	Pinamalayan	Tadyawan, Tau-buid
San Teodoro	Iraya	Gloria	Tadyawan, Tau-buid
Baco	Iraya, Alangan	Bansud	Buhid, Bangon, Tadyawan
Naujan	Alangan, Tadyawan	Bongabong	Buhid, Bangon
Victoria	Alangan, Tadyawan	Roxas	Buhid, Bangon
Socorro	Tadyawan, Tau-buid	Mansalay	Hanunoo, Buhid, Bangon
Pola	Tadyawan	Bulalacao	Hanunoo

Source: National Commission for Indigenous Peoples, 2016

Seven Mangyan Tribes




ECONOMIC PROFILE

AGRICULTURE

Rice Area by City/Municipality, 2016

City/ Municipality	Irrigated Area (ha)	Rainfed Area (ha)	Total Rice Area (ha)
1st District			
Baco	2,958.50	2,304.75	5,263.25
Calapan City	14,561.10	1,434.50	15,995.60
Naujan	24,673.66	4,681.55	29,355.21
Pola	2,130.00	700.00	2,830.00
Puerto Galera	8.00	26.50	34.50
San Teodoro	325.00	531.00	856.00
Socorro	3,667.00	482.00	4,149.00
Victoria	6,908.25	2,379.50	9,287.75
2nd District			
Bansud	6,020.00	404.00	6,424.00
Bongabong	9,816.00	1,174.00	10,990.00
Bulalacao	919.50	779.50	1,699.00
Gloria	5,121.00	228.25	5,349.25
Mansalay	2,357.00	828.00	3,185.00
Pinamalayan	6,984.27	713.13	7,697.40
Roxas	4,405.00	211.00	4,616.00
ORIENTAL MINDORO	90,854.28	16,877.68	107,731.96

Source: Provincial Agriculture Office, 2016



IRRIGATION is the method in which a controlled amount of water is supplied to plants at regular intervals for agriculture. The term **RAINFED** agriculture is used to describe farming practices that rely on rainfall for water.

Irrigated Area by Type of Irrigation Facility by City/Municipality, 2016

Municipality	RIS (ha)	CIS (ha)	Pump/STW (ha)	Total (ha)
1st District				
Baco		493.00	240.00	733.00
Calapan City	4,031.95			4,031.95
Naujan	380.00	840.00	438.72	1,658.72
Pola	60.00		70.00	130.00
Puerto Galera				0.00
San Teodoro				0.00
Socorro	246.00	954.00	120.00	1,320.00
Victoria	300.00	592.00		892.00
2nd District				
Bansud	926.00	1,159.00		2,085.00
Bongabong		1,235.00		1,235.00
Bulalacao		416.00		416.00
Gloria		1,156.42		1,156.42
Mansalay		917.00		917.00
Pinamalayan	2,628.00			2,628.00
Roxas	1,223.00	25.00		1,248.00
Oriental Mindoro	9,794.95	7,787.42	868.72	18,451.09

Notes: NIA-Assisted Irrigation only; STW – Shallow Tube Well; CIS – Communal Irrigation System
NIS/RIS – National Irrigation System

Rice Production by City/Municipality

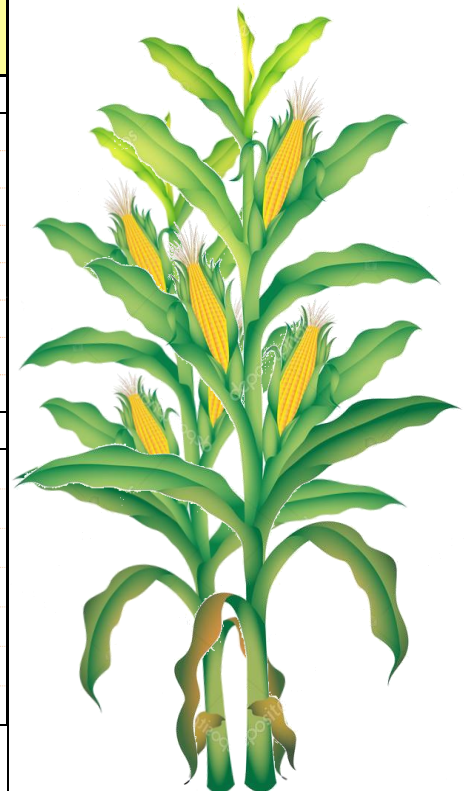
City/ Municipality	No. of Farmers	Rice Area- Wet Season (ha.)	Production Wet Season (MT)	Average Yield (MT/ha)	Rice Area- Dry Season (ha.)	Production Dry Season (MT)	Average Yield (MT/ha)
1st District							
Baco	1,909	2,639.00	9,675.25	3.6	2,624.25	9,957.80	3.5
Calapan City	3,607	7,873.55	40,910.78	4.9	8,122.05	36,413.20	4.9
Naujan	6,111	14,472.60	68,031.73	4.5	14,882.61	69,506.80	4.5
Pola	878	1,415.00	7,076.50	5.0	1,415.00	6,772.00	5.2
Puerto Galera	10	16.50	171.21	4.0	18.00	59.3	-
San Teodoro	285	428.00	1,637.30	3.5	428.00	1,599.20	3.7
Socorro	982	2,078.00	7,743.90	4.3	2,071.00	9,427.70	4.3
Victoria	2,131	4,449.50	22,853.13	4.9	4,838.25	17,681.30	4.7
2nd District							
Bansud	2,138	3,251.00	13,424.55	3.4	3,173.00	11,943.30	3.2
Bongabong	3,086	5,412.00	26,187.50	4.4	5,578.00	24,176.70	4.6
Bulalacao	1,232	1,482.00	2,243.30	4.3	217.00	7,212.00	4.6
Gloria	1,835	2,669.00	10,064.72	4.1	2,680.25	11,372.40	4.1
Mansalay	1,876	2,383.00	10,383.00	4.6	802.00	12,351.80	4.6
Pinamalayan	2,496	3,774.32	16,060.43	4.6	3,923.08	18,640.80	4.6
Roxas	1,361	2,204.00	8,949.70	5.0	2,412.00	8,744.20	5.1
Oriental Mindoro	29,937	54,547.47	245,413.00	4.5	53,184.49	245,858.30	4.6

Source: Provincial Agriculture Office, 2016

Corn Production by City/Municipality

City/ Municipality	No. of Farmers	Area Harvested (ha)	Production (MT)	Average Yield (MT/ha)
1st District				
Baco	119	68.55	118.65	1.73
Calapan City	32	64.25	67.88	1.06
Naujan	88	45.20	233.92	5.18
Pola	-	-	-	-
Puerto Galera	212	6.50	13.00	2.00
San Teodoro	2	3.00	7.50	2.50
Socorro	8	6.67	19.53	2.93
Victoria	47	196.00	711.76	3.63
2nd District				
Bansud	80	268.55	300.99	1.12
Bongabong	252	30.00	52.50	1.75
Bulalacao	412	824.60	4,004.15	4.86
Gloria	117	151.00	703.24	4.66
Mansalay	313	197.10	380.76	1.93
Pinamalayan	13	66.23	311.85	4.71
Roxas	15	-	-	-
Oriental Mindoro	1,710	1,927.65	6,925.73	3.59

Source: Provincial Agriculture Office, 2016



Vegetable Production



Commodity	No. of Farmers	Area Planted (ha)	Area Harvested (ha)	Production (MT)	Average Yield (MT/ha)
Root Crops	3,078	96.31	48.51	104.90	1.09
Fruit Vegetables		479.30	197.43	639.32	1.33
Leafy Vegetables		72.42	36.40	55.72	0.77
Legumes		669.90	302.98	148.50	0.22
Condiments		677.40	347.40	2,973.60	4.39
Total	3,078	1,995.33	932.72	3,992.04	2.00

Source: Provincial Agriculture Office, 2016

Coconut Production by City/Municipality



City/ Municipality	Coconut Area (ha)	No. of Coconut Farmers	No. of Coconut Barangays	No. of Trees Planted		Estimated Nut Production	
				Non-Bearing	Bearing	No. of Nuts	Copra (M.T.)
1st District							
Baco	4,703	2,817	25	127,784	347,220	17,361,000	434.0
Calapan City	1,289	1,183	19	43,242	84,330	4,216,500	105.4
Naujan	3,297	3,803	59	118,350	244,373	13,196,142	330.0
Pola	8,907	5,439	23	240,832	703,301	38,681,555	967.0
Puerto Galera	3,200	1,311	13	93,784	226,260	11,765,520	294.1
San Teodoro	2,143	1,105	8	88,629	166,441	7,822,727	195.6
Socorro	2,768	1,425	20	74,679	251,956	12,597,800	314.9
Victoria	3,030	936	24	111,745	145,846	7,292,300	182.3
2nd District							
Bansud	1,780	656	10	39,796	102,615	5,130,750	128.3
Bongabong	6,205	2,782	28	174,063	415,389	20,769,450	519.2
Bulalacao	970	813	12	33,860	41,779	1,712,939	42.8
Gloria	4,733	3,489	26	77,159	424,504	22,074,208	551.9
Mansalay	1,366	916	14	41,417	62,418	2,621,556	65.5
Pinamalayan	4,476	4,498	27	83,715	408,591	20,838,141	521.0
Roxas	1,487	1,197	15	31,282	90,683	3,899,369	97.5
Oriental Mindoro	50,354	32,370	323	1,380,337	3,715,706	189,979,957	4,749.5

Source: Philippine Coconut Authority, 2016

High Value Commercial Crops (HVCC) Production

Commodity	Area (ha)	No. of Trees	Harvest (MT)	Average Yield (MT/ha)
Banana	22,450.19	7,033,575	399,583.29	17.80
Mango	1,603.81	157,438	63,891.63	39.84
Calamansi	3,573.51	1,932,805	35,595.00	9.96
Rambutan	3,468.33	1,387,978	1,639.60	0.47
Lanzones	4,001.70	1,462,980	2,981.66	0.75
Durian	455.43	59,128	183.34	0.40
Coffee	77.50	1,700	68.07	0.88
Total	35,630.47	12,035,604.00	503,942.59	14.14

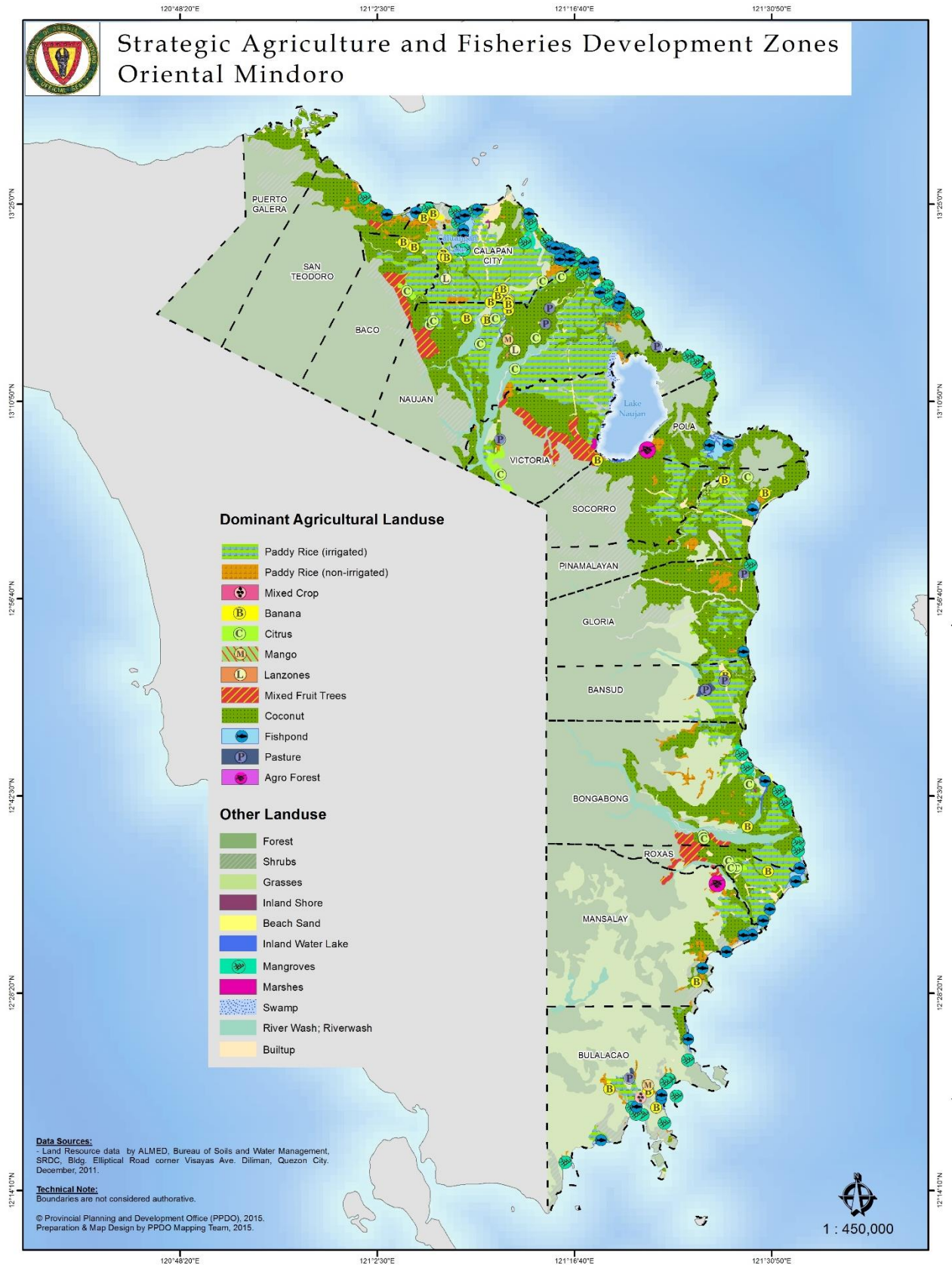
Source: Provincial Agriculture Office, 2016

Top Five Fruit Production by City/Municipality

Municipality	Production (MT)					
	Banana	Mango	Calamansi	Lanzones	Rambutan	Total
1st District						
Baco	4,335.76	66.10	545.50	0.22	88.08	5,035.66
Calapan City	6,775.45	17.88	1,281.20	4.45	19.30	8,098.28
Naujan	58,801.75	185.00	18,309.80	73.25	331.27	77,701.07
Pola	17,948.50	15.00	5,271.80	20.10	67.80	23,323.20
Puerto Galera	45.62	0.18	1,215.00		0.15	1,260.95
San Teodoro	7,997.33	11.50	135.80	2.20	19.40	8,166.23
Socorro	36,062.00	1.20	4,881.30	1,534.25	170.25	42,649.00
Victoria	8,767.78	10.50	125.80	26.59	77.29	9,007.96
2nd District						
Bansud	45,502.83	121.55	29.00	22.50	60.50	45,736.38
Bongabong	36,008.50	25.00	388.60	15.00	140.50	36,577.60
Bulalacao	85,578.67	63,143.13				148,721.80
Gloria	23,284.43	14.59	482.60	283.35	23.50	24,088.47
Mansalay	9,693.50	221.00	779.40	846.00	420.00	11,959.90
Pinamalayan	50,575.37	21.00	278.10	27.75	112.56	51,014.78
Roxas	8,205.80	38.00	1,870.60	126.00	109.00	10,349.40
Oriental Mindoro	399,583.29	63,891.63	35,594.50	2,981.66	1,639.60	503,690.68

Source: Provincial Agriculture Office, 2016

Strategic Agriculture and Fisheries Development Zones Map



Livestock Inventory

Livestock	2014	2015	2016
Carabao	33,760	33,606	34,447
Cattle	30,915	28,953	27,534
Goat	30,010	28,061	26,829
Hog	103,304	94,179	87,586
Chicken	554,147	565,173	499,445
Duck	49,294	19,423	20,951
Total	801,430	769,395	696,792

Source: CountrySTAT Philippines

Fishery Area Production and Income

Indicators	Area (ha)	Production (MT)	Income (Php)
Freshwater			
* <i>Tilapia</i>	157.26	179.88	14,390,480.00
Brackishwater			
* <i>Bangus and Sugpo</i>			
FLA	887.36	161.02	16,102,000.00
Private	1,143.60		
Total	2,030.96		
Municipal Fisheries		9,997.03	1,199,643,600.00
Commercial Fisheries		9,470.45	1,136,454,000.00
Total		19,808.38	2,366,590,080.00

Source: Provincial Agriculture Office, 2016

Per capita fish consumption

36.6

(31,309,945.89)

Number of Registered Fisherfolk

14,718



TOURISM

Oriental Mindoro Accommodation Establishments

City/Municipality	No. of Accommodation Establishments	No. of Rooms	Bedding Capacity	Total Employment
1st District				
Baco	3	37	171	13
Calapan City	31	440	1,365	207
Naujan	10	66	375	69
Pola	7	14	54	16
Puerto Galera	164	2,790	7,174	1,541
San Teodoro	4	20	90	8
Socorro	3	26	52	6
Victoria	9	43	96	23
2nd District				
Bansud	5	47	149	18
Bongabong	9	80	240	26
Bulalacao	6	25	130	23
Gloria	8	57	238	38
Mansalay	8	40	64	22
Pinamalayan	13	123	317	58
Roxas	21	133	264	57
Oriental Mindoro	301	3,941	10,779	2,125

Source: Provincial Tourism, Investment and Enterprise Development Office, 2016

Tourist Attractions



The Tamaraw



Mount Halcon



History and Culture



Industrial Tourism



Nature



Sports and Recreational Facilities



Health and Wellness

Tourist Sites and Destinations by City/Municipality

Puerto Galera	San Teodoro
The Cross and Canyons (Muelle Bay)	Punta Baluarte Spanish Fortress
Garita or Spanish Guardhouse	Saclag Settlement Farm School
Excavation Museum	Aras Waterfalls
Baclayan and Talipanan Mangyan Settlements	Botolan Waterfalls
Paradise Zoo (Herpa World)	Binaybay Waterfalls
Giant Clam Garden	Paspasin Waterfalls
Hibiscus Garden	Agsambalilo Waterfalls
Municipal Forest Park	Singiton Waterfalls
Ponderosa Golf Club	Lambingan Waterfalls
White Sand Beaches (19)	Raymundo Waterfalls
Premier Dive Sites (36)	Ibuye Waterfalls
Tamaraw Waterfalls	Yango Waterfalls
Talipanan Waterfalls	Palomaan Waterfalls
Aninuan Waterfalls	Kamatis Waterfalls
Tukuran Waterfalls	Kaguinto Waterfalls
Tukuran River	Tabunan Hot Spring
Coral Garden at Long Beach	Aras Cave
Tabinay and Villafior Hot Springs	Tagong Paraiso Falls
Python and Underwater Caves	Subuan River
Puerto Galera Bay	Saclag Hanging Bridge
Mt. Malasimbo	Punta Beach
The Black Rice at Muelle	Arigoy White Water Kayaking
Marble Mine	
Lighthouse	
Baco	Calapan City
Mount Halcon	Calapan Recreational and Zoological Park
Baco Infinity Farm	Bulusan-Suqui Eco Trail
Gumahan San Andres (The Sunken Town/Old Settlement)	Pachoca-Balite and Lazareto, Suqui-Parang Beaches
Cueva Sagrada	Caluangan Lake
Tiboy Baras Rapids	Baco-Chico Islets
Tagbungan River	Harca Piloto Islet
Mayabig River	Aganahaw Islet
Catuwiran River	Silonay Islet
Mayagao River	Parang Coconut and Banana Plantations
Mangangan and Karayrayan Tunnels	Sapul Orchard
Nature's Park	Casa Real Ruins
Lantuyan Waterfalls	Calapan City Hall
Bayanan Waterfalls	Kayak, Boardwalk
	Calapan Town Plaza
	Wakeboarding
	Mangyan Heritage Center
	Calapan City Museum
	Silonay Mangrove Conservation and Protection Area
Naujan	Victoria
Naujan Lake	Tongloy Mountain Lake
Pungao, Boloc Boloc and Montelago Hot Springs	Tongloy Mountain Water Falls
Arangin Waterfalls	Fruit Orchards
Arambyaw Waterfalls	Philippine Tree Farm, Inc.
Taguan Waterfalls	Polester and Butterfly Farms
Karacha Falls	Gipit Picnic Grove
Bancuro Church Ruins	Villa Bautista Resort
Baluarte (Bell Tower)	Triple L Resort
Sta. Isabel Tree Farm	

Naujan	Socorro
Milar Aquatic Farm	Batong Dalig River
Bancuro Butterfly Sanctuary	Maradyong and La Fortuna Waterfalls
Naujan Town Plaza	Lake View Park
Paitan River	Tree Farms
Dome Hill	Tyron Butterfly Breeding Farm
Tuhod Beach	Marl Insects and Butterfly Culture Branch
Estrella Beach Resort	
Lagarian Beach Resort	
Pola	Gloria
Tuntong Point	Walang Langit Waterfalls
Talon Waterfalls	Bulaklakan Tree Farm
Tabunan Waterfalls	Mount Manguyang Camping Site
Enchanted Waterfalls	
Campamento Waterfalls	
St. John the Baptist Shrine	
Misong Archaeological Site	
Old Houses	
Misong Mangrove Forest	
Aguada Beach	
Pinamalayan	Bansud
Rosario Cave	Rosacara River
Cawa-cawa Cave and Marayos Waterfalls	Manihala Waterfalls
Mahabang Buhangin	Lanon Conrazon Waterfalls
Banilad Bayview	Langkawan Waterfalls
Mts. Dumali, Beyer and Worcester	Bansud Museum
Bongol Point	Mangyan Settlements
Pili-Banilad-Ranzo Reefs	Bansud Municipal Park and Plaza
Pinamalayan Theme Park	Madri Monte Beach Resort and Training Center
Mangyan Shooting Range	
Rainbow Junction	
Parola at Pinamalayan Bay	
Magdalena Beach Resort	
Bulaklak Garden Resort	
Ranzo Stairway to Heaven	
Pinamalayan Airport	
Banilad Archaeological Site	
Tau Buhid Mangyan Settlement	
Ranzo Lighthouse	
Bongabong	Mansalay
Balogbog Cave	Matang Pugita and Lamak River/Waterfalls
Paladjungen Cave	Palaypay Burial Ground and Palaypay Diit River
Tawas Cave	Lanao Sigong River
Tangisan Waterfalls	Mansalay Bay
Agpayan Waterfalls	Bugtong Bato Point
Kampana Waterfalls	Mangyan Virgin Cave
Pinagbangayan Waterfalls	Acacia Park and Mountain View Palace
Payagnon Waterfalls	Buktot and Kasabangan White Sand Beaches
Gantong Waterfalls	Bait Mangyan Village in Brgy. Panaytayan
17 th Century Kuta Shrine	Burial Cave in Balanga
Ancestral House of Vicente Ilagan	Mangyan Culture Settlement
Batangan Mangyan Community	Municipal Museum
Botanical Park	Wasig Airport
Municipal Park	Turtle Sanctuary
	Mansalay Eco Park
	Mansalay Municipal Port

Roxas	Bulalacao
San Rafael Cave	Target Island
Tauga Diit River	Sugicay Island
Happy Valley Mountain View	Maasin Island
Fish Sanctuary	Sibalat Island
San Vicente Eco-Forest	Buyayao Island
	Tambaron Islet
	Aslom Islet
	Silad Islet
	Nagubat Islet
	Liwagao Islet
	Borbo Islet
	Pocanil Islet
	Cabugao Waterfalls
	Bagong Sikat Falls
	Panangiran Peak
	Buyayao Peak
	Mt. Namalayan
	Colon Hill
	Lubok Sunken 17 th Century Sunken Church

Source: Provincial Tourism, Investment and Enterprise Development Office, 2016

Festivities by City/Municipality

Municipality	Foundation Day	Date of Fiesta	Festival	
			Name	Date
Baco	January 25	March 19	Banana	January 25
Bansud	July 4	January 17-19	Basudani	January 19
Bongabong	December 7	March 19	Sulyog	March 19
Bulalacao	February 15	June 29	Biniray	June 29
Calapan City	March 21	January 1	Harvest/Kalap Festival	March 21
Gloria	October 1	February 14-15	Kawayanan	Sept. 29 – Oct. 1
Mansalay	July 24	November 25	Mansalenses Palakaya	July 24
Naujan	January 4	September 10	DaBaLiSiHit	September 10
			Bibingka	May 24
Pinamalayan	April 25	April 25	Bahaghari	April 25
			Bahaghari Centurion	Every Holy Week
Pola	January 1	June 24	Sab'uyan & Bankathon	June 24
			Pola Moriones	April
Puerto Galera	March 18	December 8	Kaaldawan Iraya	October 12
			De Galera	May 10-12
Roxas	November 15	January 25	Sipag	July 28
San Teodoro	February 16	December 8	Adyawan Festival	December 8
Socorro	July 26-27	July 26-27	Pakapya Agtike	July 26
Victoria	September 18	October 14-15	Kapakyanan	September 18

Source: Provincial Tourism, Investment and Enterprise Development Office, 2016

COMMERCE AND INDUSTRY

Business Establishments by Type, Investments & Employment

Sectoral Classification	No. of Applications	Investments (PhP Million)	Employment
Agriculture	12	7.490	29
Manufacturing	104	10.228	306
Services	960	231.929	2,405
Tourism	51	36.001	155
Trading	1,084	258.377	1,968
Total	2,211	544.025	4,863

Source: Department of Trade and Industry, 2016

Banks with Automated Teller Machines (Calapan City):

- Agri Business Rural Bank
- Asia United Bank
- Banco de Oro (BDO)
- Bank of Commerce
- Bank of the Philippine Islands (BPI)
- Card Bank
- China Banking Corp.
- City Savings Bank
- Development Bank of the Philippines (DBP)
- East West Banking Corp.
- First Consolidated Bank
- May Bank
- Max Bank
- Metropolitan Bank and Trust Company
- Philippine National Bank (PNB) Commercial Bank
- Philippine National Bank (PNB) Savings Bank
- Philippine Savings Bank
- Rizal Commercial Banking Corporation (RCBC)
- Robinson's Bank Corp.
- Security Bank
- United Coconut Planters Bank (UCPB)



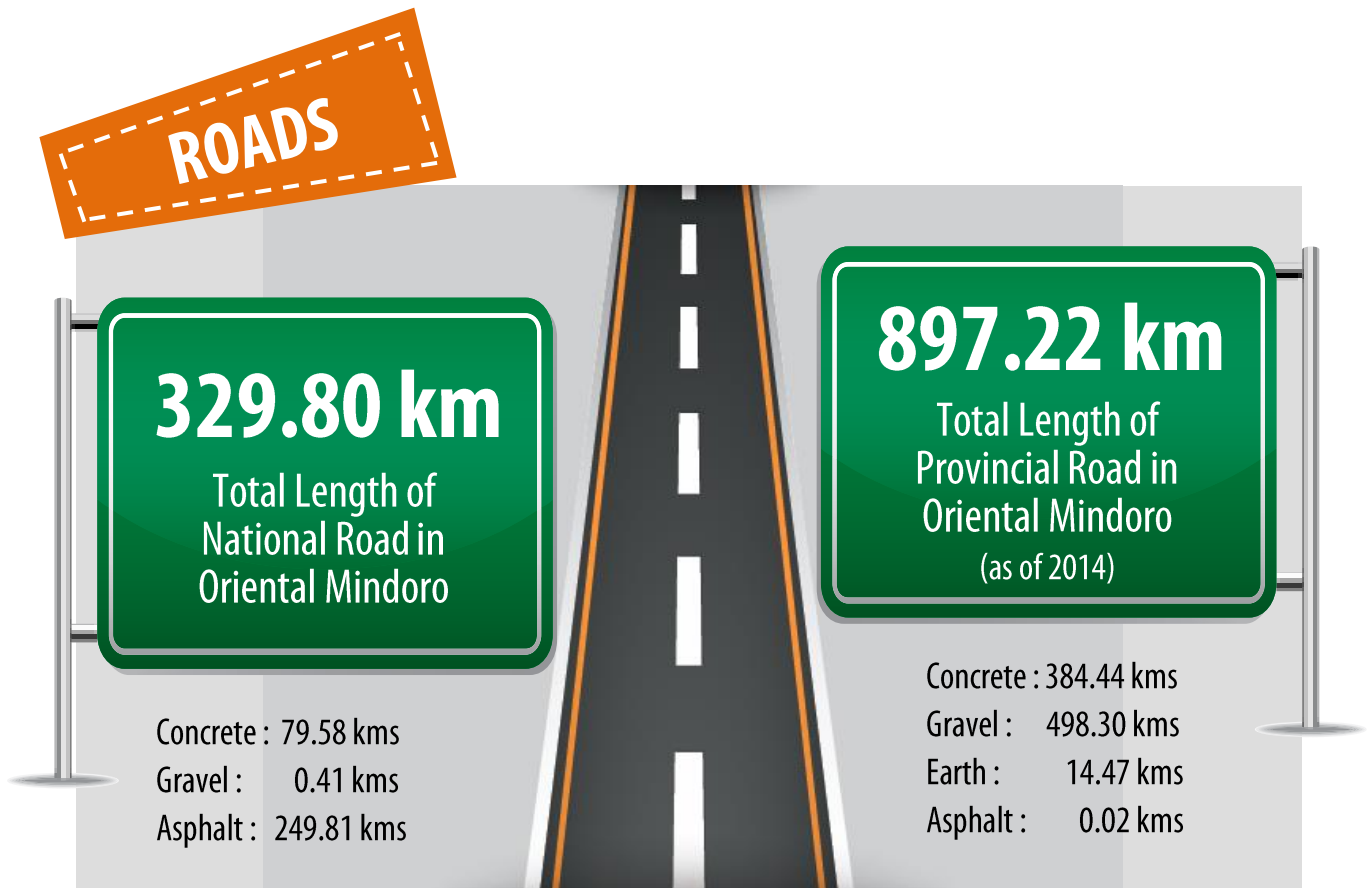
Number of Banks and ATMs by City/Municipality

City/Municipality	Banks	ATMs
Baco	1	-
Bansud	2	2
Bongabong	3	2
Bulalacao	-	-
Calapan City	39	41
Gloria	5	1
Mansalay	1	-
Naujan	3	1
Pinamalayan	11	6
Pola	1	-
Puerto Galera	4	5
Roxas	5	4
San Teodoro	1	1
Socorro	4	2
Victoria	3	2
Total	83	67

Source: City/Municipal Planning and Development Office, 2016

INFRASTRUCTURE AND UTILITIES

TRANSPORTATION



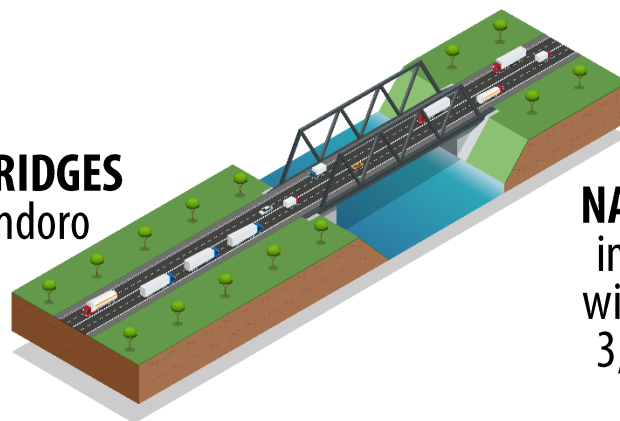
Source: Department of Public Works and Highways and Provincial Engineering Office, 2016

BRIDGES

There are

91

PROVINCIAL BRIDGES
in Oriental Mindoro



There are

66

NATIONAL BRIDGES
in Oriental Mindoro
with a total length of
3,291 linear meters

Source: Department of Public Works and Highways and Provincial Engineering Office, 2016

**LAND
TRANSPORTATION**

Registered Vehicles	
Private	
Car (Light, Medium, Heavy)	1,256
Utility Vehicle	4,777
Sports Utility Vehicle	789
Truck	816
Motorcycle with sidecar	2,936
Motorcycle without sidecar	12,676
For Hire	
Utility Vehicle	702
Truck	95
Tricycle	4,260
Government	
Utility Vehicle	152
Sports Utility Vehicle	24
Truck	31
Motorcycle without sidecar	34
License Issued	
Professional	11,793
Non-professional	7,123
Student	9,486
Collection from fines on law enforcement	PhP1,959,650.00

Source: Land Transportation Office-Calapan District Office, 2016

AIRPORTS

Oriental Mindoro has **3** Existing Airports

- Calapan City Airport
- Pinamalayan Airport
- Wasig Airport

Aircraft Movements (2016):

- Private/commercial aircraft landed (Calapan) – 1,073
- Government including military craft – 23

Source: Civil Aviation Authority of the Philippines, 2016



SEA PORTS

2
MAJOR PORTS
(Calapan City & Roxas)



Sea Ports and Facilities

Name of Port	Port Facilities
Baseport - Calapan	Nine RoRo Ramps
	One floating ramp for Fastcraft
	Port Operations Building
	Passenger Terminal Building
	New PTB (non-operational)
	Marshalling Area
Abra De Ilog	Two (2) RoRo Ramps
	Passenger Terminal Building
	Marshalling Area
Roxas	Two (2) RoRo Ramps
	Passenger Terminal Building
	Marshalling Area
Tilik, Lubang	Four (4) RoRo Ramps
	Passenger Terminal Building
	Marshalling Area
San Jose (New Port)	Two (2) RoRo Ramps
Bansud	Wharf
Puerto Galera-Balatero	Two (2) RoRo Ramps
	Back up Area
	New PTB (on-going construction)
	Passenger Terminal Building
Puerto Galera-Muelle	Wharf
Pinamalayan	Wharf
Mansalay	One (1) RoRo Ramp
	One (1) Conventional Ramp
Bulalacao	One (1) RoRo Ramp
	Field Office
Pola	One (1) RoRo Ramp
	Street Lights
	Marshalling Area

Source: Philippine Ports Authority, 2016

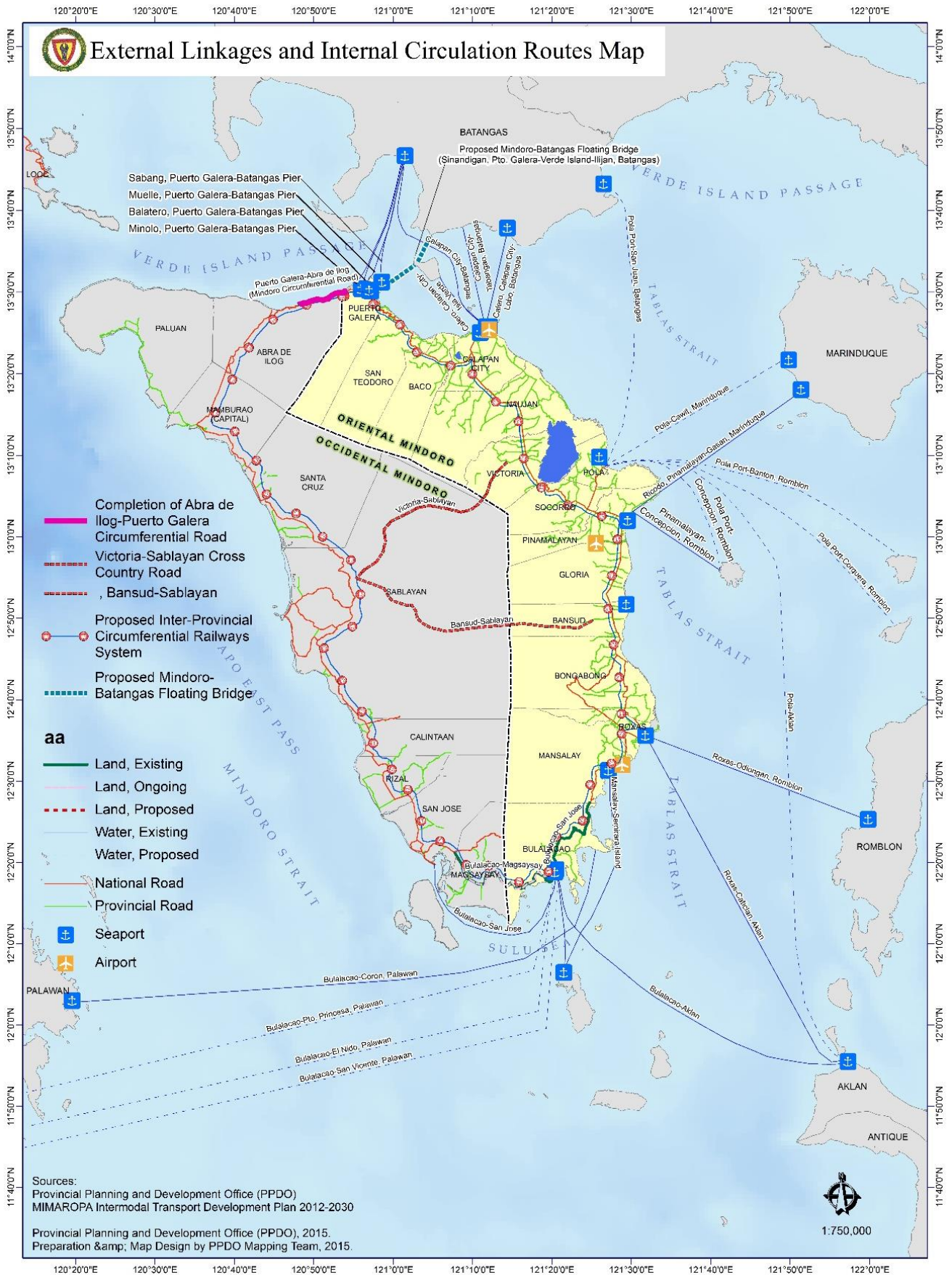
RO-RO vessels	16
Fast craft	5
Shipping company	8
Ship calls	30,070
Passengers	7,388,670
a. Inbound	3,867,537
b. Outbound	3,521,133
Cargo Throughput	
Non-RoRo	604,255.88
a. Inbound	393,139.08
b. Outbound	211,116.80
Rolling Cargo (in units)	652,417
a. Inbound	326,799
b. Outbound	325,618

Baseport – Calapan Statistical Reports

Shipcalls	
<i>RoRo</i>	<i>Fastcraft</i>
12,207	6,479
Passengers	
<i>Disembarked</i>	<i>Embarked</i>
2,617,582	2,355,139
Cargo Throughput (in MT)	
<i>Inbound</i>	<i>Outbound</i>
61,520.76	442.51
RoRo Cargo Throughput (in Units)	
<i>Inbound</i>	<i>Outbound</i>
229,307	216,298

Source: Philippine Ports Authority, 2016

External Linkages and Internal Circulation Routes Map



COMMUNICATION



Newspapers

(Coverage : Oriental Mindoro and Southern Tagalog)

1. Island Sentinel
2. Island Profiles
3. Island Observer
4. Halcon Star
5. Mindoro Bulletin
6. Mindoro Weekly Reporter
7. People's Tribune



Wireless Service Providers



City/ Municipality	No. of Cellsites	
	Smart Communications	Globe Telecom
Baco	1	-
Bansud	2	-
Bongabong	1	-
Bulalacao	1	-
Calapan City	9	8
Gloria	2	2
Mansalay	1	-
Naujan	5	1
Pinamalayan	4	-
Pola	1	-
Puerto Galera	3	2
Roxas	2	1
San Teodoro	1	-
Socorro	2	-
Victoria	2	2
Total	37	16

Source: Smart Communications, 2016 and Globe Telecom, 2015

Telephone Companies (landline)



Calapan Telephone System, Inc.
Calapan City, Puerto Galera, Victoria, Socorro, Pinamalayan,
Bongabong, Roxas, Gloria, Bansud



Globe Telecom
Calapan City, Puerto Galera, Naujan, Victoria, Socorro,
Pinamalayan, Bongabong, Roxas



Internet Service Providers



Calapan Telephone Systems, Inc. (CATSI)
Calapan City, Pinamalayan, Bongabong



Globe Telecom
Calapan City, Puerto Galera, Naujan, Victoria, Pinamalayan



Smart Communications
Provincewide



Tamaraw Vision Network, Inc. (TVNet)
Calapan City



Radio Stations and Cable TV Networks by City/Municipality

Municipality	FM Radio Station	Cable Television Network	City/Municipality	FM Radio Station	Cable Television Network
1st District			2nd District		
Baco		1	Pinamalayan	2	2
San Teodoro		1	Gloria		1
Puerto Galera		1	Bansud	1	1
Calapan City	4	2	Bongabong	1	1
Naujan	1	1	Roxas	1	1
Victoria		1	Mansalay		1
Socorro	1	2	Bulalacao		
Pola		1			
Oriental Mindoro	6	10	Total	3	7

Source: Municipal Planning and Development Offices, Communication and Public Relations Services Division, Tamaraw Vision Network, Calapan Cable, 2016

Ratio of postal employees to total population

Municipality	No. of HH 2015	No. of Postal Employees	Ratio
1st District			
Baco	37,182	1*	1:37,182
Calapan City	132,864	12	1:11,072
Naujan	102,903	1	1:102,903
Pola	34,699	1*	1:34,699
Puerto Galera	36,311	2	1:18,156
San Teodoro	17,882	1	1:17,882
Socorro	39,044	1	1:39,044
Victoria	50,432	1	1:50,432
2nd District			
Bansud	40,859	1	1:40,859
Bongabong	71,909	1	1:71,909
Bulalacao	39,044	-	
Gloria	45,011	-	
Mansalay	54,487	-	
Pinamalayan	85,948	4	1:21,487
Roxas	53,033	3	1:17,678
Oriental Mindoro	841,608	29	1:29,021

Sources: Philippine Postal Corporation, 2016; Philippine Statistics Authority 2015 Census of Population

*Municipal paid employee

WATER

Level III Water System by City/Municipality

City/Municipality	Water Service Provider	Type of Water Facility
Calapan City	Calapan Waterworks System and Dev't Corporation	Pressure Pump
Baco	Pag-asa Water System	Gravity-fed
	Bangkatan Water System	Gravity-fed
	Dulangan III Water System	Gravity-fed
	San Ignacio Water System	Gravity-fed
	Barangay Water Water System	Gravity-fed
Bongabong	Bongabong Municipal Waterworks System	Pressure Pump
	Formon Water System	Pressure Pump
	Labasan Water System	Gravity-fed
	Carmundo Water System	Pressure Pump
	Hagan Water System	Pressure Pump
	Libertad Water System	Pressure Pump
	Malitbog Water System	Pressure Pump
Bulalacao	Bulalacao Water System	Pressure Pump
San Teodoro	San Teodoro Water System	Gravity-fed
Gloria	Tambong Water System	Pressure Pump
	Malamig Water System	Pressure Pump
Mansalay	Mansalay Waterworks System	Pressure Pump
Naujan	Naujan Water District	Pressure Pump
	Melgar A Waterworks Association	Pressure Pump/Gravity-fed
	Melgar B Waterworks	Gravity-fed
	Poblacion I Water System	Pressure Pump
	Barcenaga Water System	Pressure Pump
	Sampaguita Water System	Pressure Pump
	So. Balangibang, Montelago Water System	Gravity-fed
Pinamalayan	Pinamalayan Water District	Pressure Pump
	Pili Rural Waterworks	Pressure Pump
	Maliancog Water System	Pressure Pump
	Pambisan Munti Water System	Pressure Pump
	Banilad Waster System	Gravity-fed
	Sabang Water System	Gravity-fed
Pola	Pola Water District	Pressure Pump
	So. Centro, Panikihan Water Supply System	Pressure Pump
	So. Parangan, Panikihan Water Supply System	Gravity-fed
	So. Palmera 1, Malibago Water System Association	Pressure Pump
	So. Palmera 2, Malibago Water System Association	Pressure Pump
	Tiguihan 1 Water Users Association	Gravity-fed
	Tiguihan 2 Water Users Association	Gravity-fed
	Bacawan 1 Water System Association	Gravity-fed
	Bacawan 2 Water System Association	Gravity-fed
	Campamento 1 Water System Association	Gravity-fed
	Campamento 2 Water System Association	Gravity-fed
	Tagumpay Water System Association	Gravity-fed
Puerto Galera	Puerto Galera Water Works Office	Gravity-fed
	Dulangan Water System	Gravity-fed
	Aninuan Water System	Gravity-fed
	Tabinay Water System	Gravity-fed
	Villalflor Water System	Gravity-fed
Roxas	Roxas Water District	Pressure Pump
	Cantil Water System	Pressure Pump
Socorro	Socorro Waterworks System Administrations	Pressure Pump
Victoria	San Gabriel Water System	Pressure Pump
	Bagong Silang Water System	Pressure Pump

Source: City/Municipal Planning and Development Office, 2016

Household Population by Source of Drinking Water

Source of Drinking Water	Source of Drinking Water*	
	Magnitude*	Proportion**
Own use faucet, community water system	31,329	18.73
Shared faucet, community water system	26,533	15.86
Own use tubed/piped deep well	18,784	11.23
Shared tubed/piped deep well	42,207	25.24
Tubed/piped shallow well	10,950	6.55
Dug well	4,507	2.69
Protected spring	7,930	4.74
Unprotected spring	4,939	2.95
Lake, river, rain and others	2,125	1.27
Peddler	10,754	6.43
Bottled water	3,979	2.38
Others	3,438	2.06
Total	167,475	100

*Type of source of drinking water of households

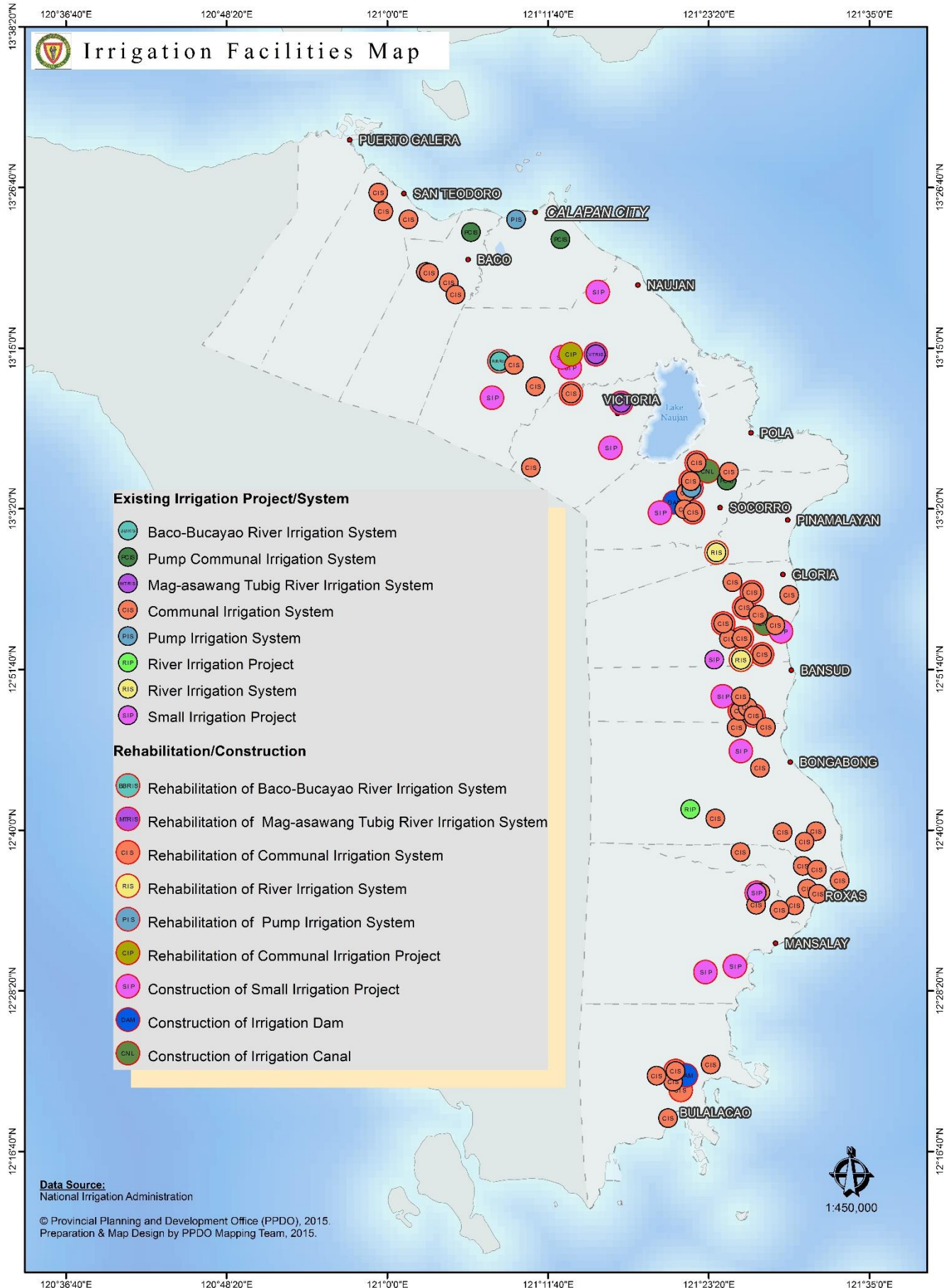
**Number of households by source of drinking water over total number of households

Source: Community Based Monitoring System Survey, 2014

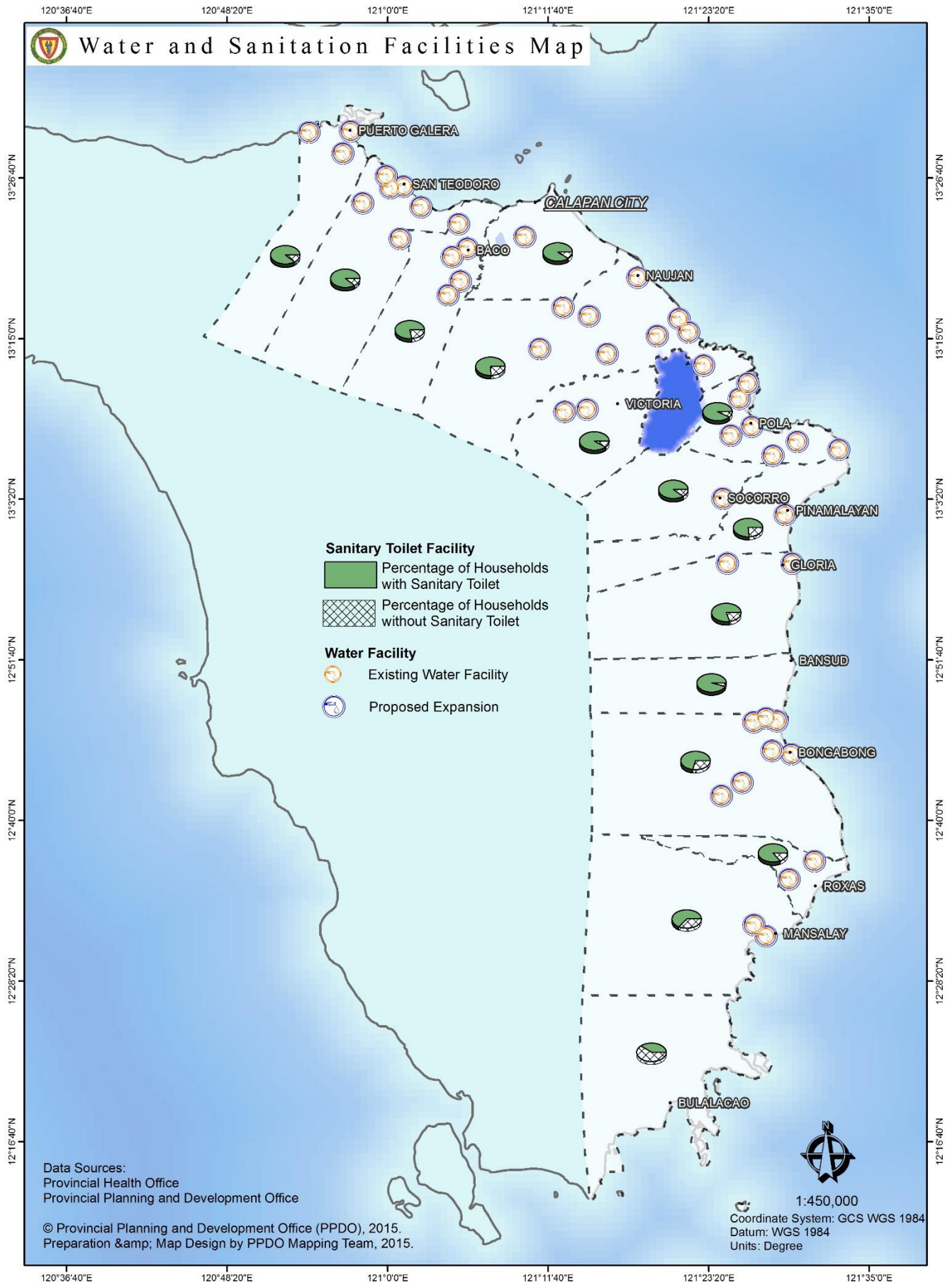
Potential Water Sources

- a. Surface Waters (rivers, streams, lakes) are available in the main rivers of Oriental Mindoro and in Naujan Lake.
- b. Groundwater

Irrigation Facilities Map



Water and Sanitation Facilities Map

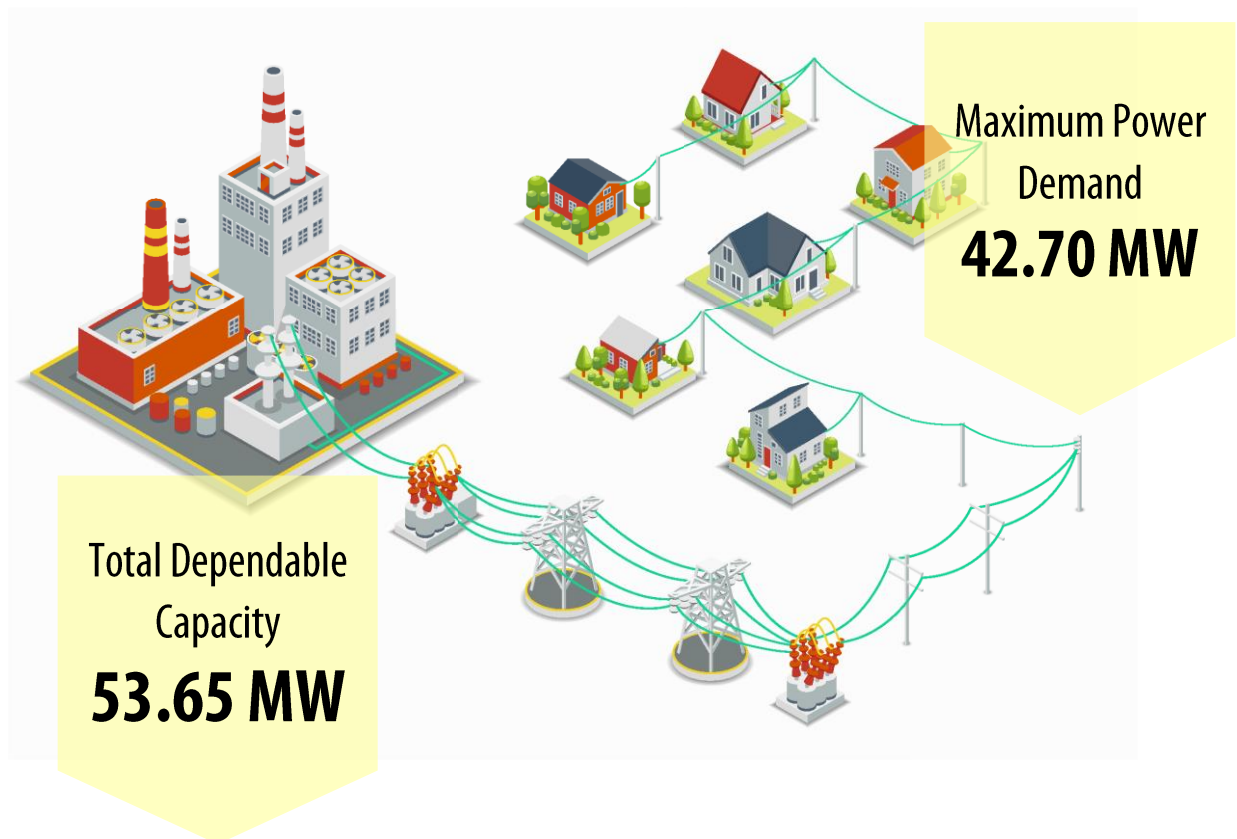


POWER

Status of Electrification

Municipality	Barangays			House Connections	Members Approved
	Covered	Energized	%		
1st District					
Baco	27	27	100	7,984	6,159
Calapan City	62	62	100	44,407	29,124
Naujan	70	70	100	24,039	19,977
Pola	23	23	100	7,552	7,189
Puerto Galera	13	13	100	10,199	5,430
San Teodoro	8	8	100	4,051	2,618
Socorro	26	26	100	9,398	7,326
Victoria	32	32	100	12,431	9,460
2nd District					
Bansud	13	13	100	8,668	7,205
Bongabong	36	36	100	14,902	11,833
Bulalacao	15	15	100	4,884	4,264
Gloria	27	27	100	9,612	7,366
Mansalay	17	17	100	6,933	6,370
Pinamalayan	37	37	100	20,519	14,722
Roxas	20	20	100	11,616	9,327
Oriental Mindoro	426	426	100	197,195	148,370

Source: Oriental Mindoro Electric Cooperative, Inc., 2016



Energized and Unenergized Sitios in Oriental Mindoro, 2016

City/ Municipality	Sitios				
	Potential	Energized	Percent	Unenergized	Percent
Calapan City	347	343	98.85%	4	1.15%
Naujan	472	451	95.55%	21	4.45%
Victoria	205	203	99.02%	2	0.98%
Baco	157	142	90.45%	15	9.55%
San Teodoro	69	49	71.01%	20	28.99%
Puerto Galera	83	68	81.93%	15	18.07%
Socorro	175	155	88.57%	20	11.43%
Pola	153	127	83.01%	26	16.99%
Pinamalayan	237	226	95.36%	11	4.64%
Gloria	189	169	89.42%	20	10.58%
Bansud	98	86	87.76%	12	12.24%
Bongabong	224	198	88.39%	26	11.61%
Roxas	138	124	89.86%	14	10.14%
Mansalay	183	110	60.11%	73	39.89%
Bulalacao	139	78	56.12%	61	43.88%
Total	2,869	2,529	88.15%	340	11.85%

Source: Oriental Mindoro Electric Cooperative, Inc., 2016

Present Sources of Power

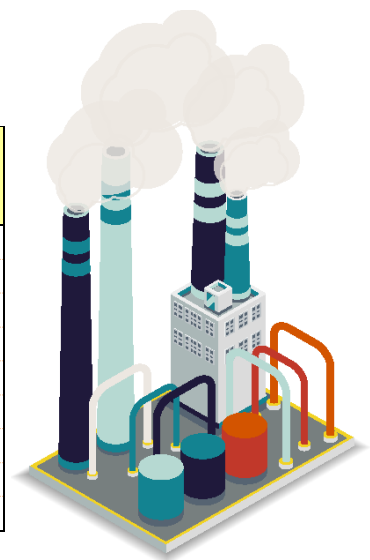
Power Plant	Installed Capacity (MW)	Dependable Capacity (MW)	Location
1. Power One Corp.	15.30	8.20	Sta. Isabel, Calapan City
2. Global Business Holdings, Inc.	7.50	5.50	Papandayan Pinamalayan
3. Ormin Power, Inc.	9.89	6.60	Sta. Isabel, Calapan City
4. Mindoro Grid Corp. (Bansud)	12.50	4.50	Conrazon, Bansud
5. Mindoro Grid Corp. (Bongabong)	11.95	4.50	Labasan, Bongabong
6. Linao Cawayan Mini Hydro (LOWER)	2.175	1.20	Calangatan, San Teodoro
7. Linao Cawayan Mini Hydro (UPPER)	3.24	2.10	Caagutayan, San Teodoro
8. DMCI Power Corp.	15.56	15.00	Sta. Isabel, Calapan City
9. Mindoro Grid Corp. (Roxas)	8.60	4.25	Odiong, Roxas
10. Mindoro Grid Corp. (Socorro)	2.50	1.80	Leuteboro, Socorro

Source: Oriental Mindoro Electric Cooperative, Inc., 2016

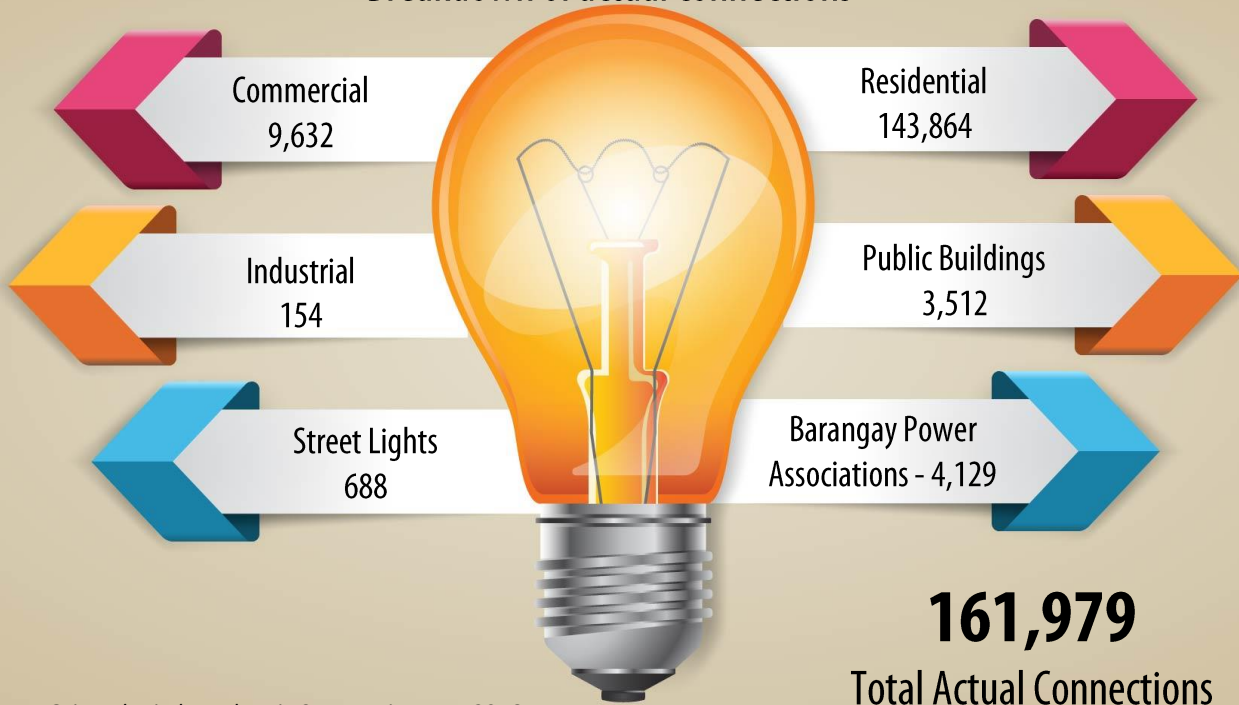
Power Substations

Power Substations [ORMECO]	Megavolt Amperes (MVA) Rating	Ownership
Calapan City	30	National Power Corporation
Pinamalayan	5	Oriental Mindoro Electric Cooperative
Naujan	5	Oriental Mindoro Electric Cooperative
Roxas	5	Oriental Mindoro Electric Cooperative
Socorro-Pola	unenergized	Oriental Mindoro Electric Cooperative
Puerto Galera	10	Oriental Mindoro Electric Cooperative
Bongabong	5	Oriental Mindoro Electric Cooperative
Bansud	5	Oriental Mindoro Electric Cooperative
Victoria	unenergized	Oriental Mindoro Electric Cooperative

Source: Oriental Mindoro Electric Cooperative, Inc., 2016



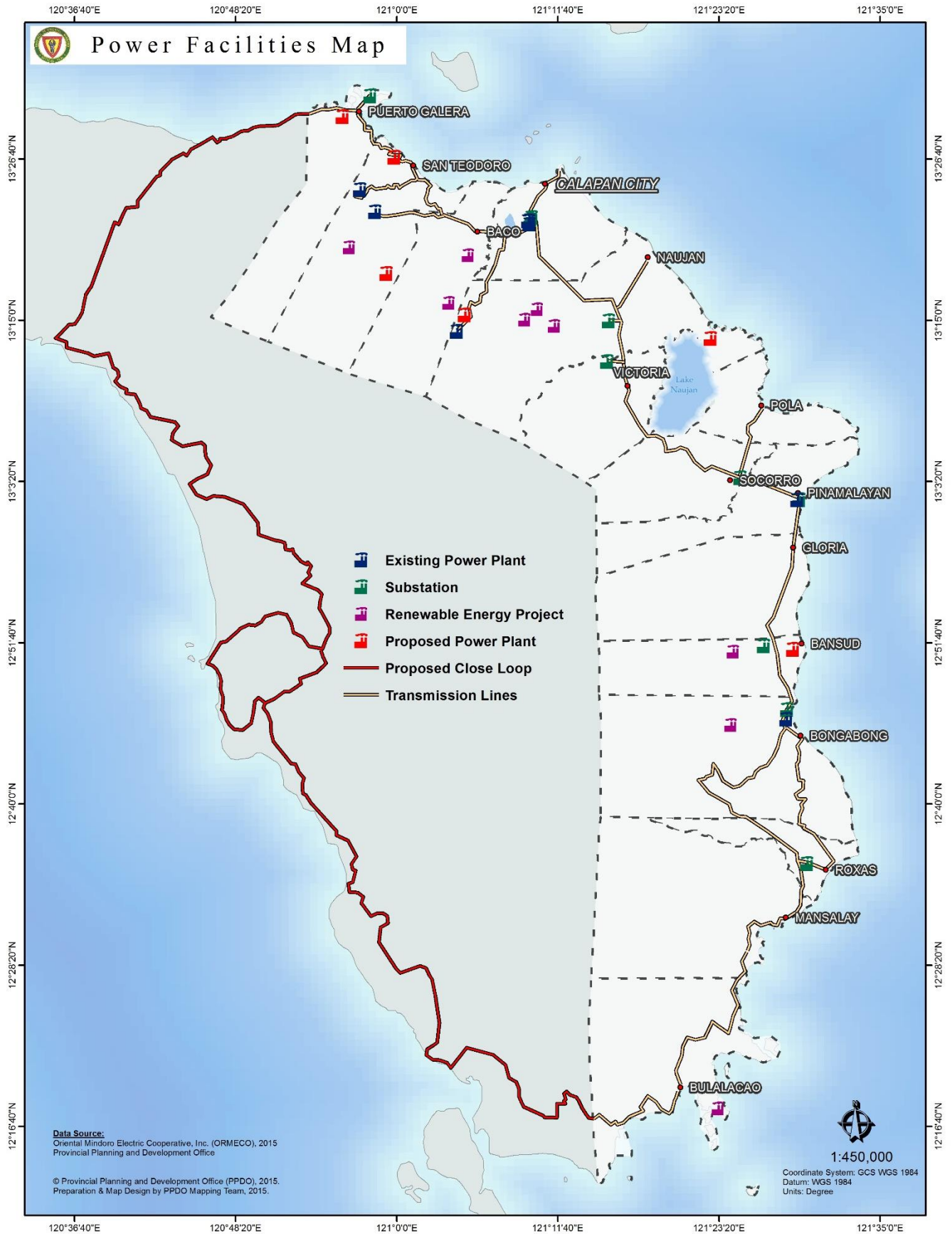
Breakdown of actual connections



Source: Oriental Mindoro Electric Cooperative, Inc., 2016



Power Facilities Map



SOCIAL DEVELOPMENT PROFILE

LABOR AND EMPLOYMENT

Comparative Labor Force Participation Rates, Employment and Unemployment Rates, MIMAROPA

Labor and Employment	2013	2014	Oct 2015
Labor Force Participation Rate	66.3	67.2	65.5
Employment Rate	95.9	95.4	97.4
Unemployment Rate	4.1	4.6	2.6
Underemployment Rate	23.4	20.4	18.7

Comparative Employment Status of Household Population 15 years old and over, MIMAROPA (in thousands)

Labor and Employment	2013	2014	Oct 2015
Total in the labor force	1,294	1,342	2,062
Total Employed	1,241	1,280	2,008
Total Unemployed	53	62	54

Note: Details may not add up to total due to rounding


Source: <http://bles.dole.gov.ph/PUBLICATIONS>

POVERTY AND INCOME


Annual per Capita Poverty Threshold, Poverty Incidence, Magnitude of Poor Families and Population by Province, MIMAROPA

Region/ Province	Annual Per Capita Poverty Threshold (in Pesos)			Poverty Incidence among Families (%)			Estimated Magnitude of Poor Families		
	2009	2012	2015	2009	2012	2015	2009	2012	2015
PHILIPPINES	16,871	18,935	21,753	20.5	19.7	16.5	4,036,915	4,214,921	3,746,513
MIMAROPA	15,613	17,292	20,224	27.2	23.6	17.4	160,226	150,486	121,283
Marinduque	15,678	17,180	19,722	27.4	23.9	11.7	13,971	12,743	9,157
Occidental Mindoro	15,937	17,412	19,994	25	29.8	30.0	24,203	31,070	31,354
Oriental Mindoro	16,710	17,415	20,410	28.8	21.5	15.0	48,741	39,272	29,061
Palawan	14,418	16,696	19,435	25.3	20.5	11.9	53,131	47,730	28,254
Romblon	15,547	18,464	21,601	32.6	30.4	28.1	20,181	19,671	23,457

Source: Philippine Statistics Authority, 2016



POVERTY THRESHOLD is the minimum income required for a family individual to meet the basic food and non-food requirements, also known as the Poverty Line.



POVERTY INCIDENCE is the proportion of families/individuals with per capita income less than the per capita *Poverty Threshold* to the total number of families/individuals.

Annual per Capita Food Threshold, Subsistence Incidence, Magnitude of Poor Families and Population by Province, MIMAROPA, 2015

Region/Province	Annual Per Capita Food Threshold (PhP)	Subsistence Incidence (%)	
		Families	Population
MIMAROPA	14,092	5.9	8.9
Occidental Mindoro*	13,901	15.8	23.0
Oriental Mindoro	14,270	6.8	9.8
Marinduque	13,722	1.9	2.8
Romblon	15,084	5.7	8.5
Palawan*	13,545	2.2	3.5

Source: Philippine Statistics Authority, 2015

*Coefficient of variation of 2015 subsistence incidence among population is greater than 20%

Annual Family Income, Expenditures and Savings of Families, MIMAROPA, 2015



Source: Philippine Statistics Authority, 2016

The 13+1 Dimensions of Poverty, Oriental Mindoro, 2014

Indicator	Households		Population					
	Magnitude	Proportion	Magnitude			Proportion		
			Total	Male	Female	Total	Male	Female
DEMOGRAPHY								
Population	167254		720015	366778	351838	100	50.9	48.9
Average household size	4							
Children under 1 year old	16140	9.7	16578	8371	8096	2.3	2.3	2.3
Children under 5 years old	63625	38	85849	43891	40838	11.9	12	11.6
Children 0-5 years old	71615	42.8	103753	53028	49605	14.4	14.5	14.1
Children 6-11 years old	69462	41.5	102752	53084	49666	14.3	14.5	14.1
Children 6-12 years old	75427	45.1	119203	61520	57681	16.6	16.8	16.4
Members 12-15 years old	51719	30.9	68307	35291	33016	9.5	9.6	9.4
Members 13-16 years old	51343	30.7	68481	35410	33071	9.5	9.7	9.4
Members 6-15 years old	90973	54.4	171059	88375	82682	23.8	24.1	23.5
Members 6-16 years old	95191	56.9	187684	96930	90752	26.1	26.4	25.8
Members 10 years old and above	166908	99.8	546818	278017	268787	75.9	75.8	76.4
Members of the labor force	150538	90	248767	167844	80921	34.6	45.8	23
HEALTH AND NUTRITION								
children under 5 years old who died	354	0.6	373	197	176	0.4	0.4	0.4
women who died due to pregnancy related-causes	27	0.2	27			0.2		
malnourished children 0-5 year old	3202	4.5	4027	2087	1940	3.9	3.9	3.9
HOUSING								
households living in makeshift housing	4907	2.9	21804	11361	10419	3	3.1	3
households who are informal settlers	6557	3.9	29331	15032	14284	4.1	4.1	4.1
WATER AND SANITATION								
households without access to safe water	30194	18.1	131533	67335	64145	18.3	18.4	18.2
households without access to sanitary toilet facility	26032	15.6	113121	59275	53779	15.7	16.2	15.3
BASIC EDUCATION								
children 6-11 years old not attending elementary	10544	15.2	11611	6178	5433	11.3	11.6	10.9
children 6-12 years old not attending elementary	17472	23.2	19170	9748	9422	16.1	15.8	16.3
children 12-15 years old not attending high school	20739	40.1	24074	13898	10176	35.2	39.4	30.8
children 13-16 years old not attending high school	20755	40.4	23825	13400	10425	34.8	37.8	31.5
children 6-15 years old not attending school	7624	8.4	9382	5627	3755	5.5	6.4	4.5
children 6-16 years old not attending school	12219	12.8	14698	8543	6155	7.8	8.8	6.8
INCOME AND LIVELIHOOD								
households with income below poverty threshold	93938	56.2	438963	225071	213383	61	61.4	60.6
households with income below food threshold	72978	43.6	344747	176930	167449	47.9	48.2	47.6
households who experienced food shortage	4409	2.6	20943	10965	9967	2.9	3	2.8
Unemployed members of the labor force	13549	9	16775	9900	6875	6.7	5.9	8.5
PEACE AND ORDER								
Victims of crime	348	0.2	399	260	135	0.1	0.1	0

Source: Community Based Monitoring System Survey, 2014



Municipal level small area estimates of poverty incidence, 2009 and 2012

Municipality	Poverty Incidence	
	2009	2012
1st District		
Baco	44.5	22.8
Calapan City	23.0	7.1
Naujan	38.4	20.5
Pola	37.9	29.2
Puerto Galera	23.9	11.0
San Teodoro	33.6	14.8
Socorro	36.8	15.4
Victoria	35.2	18.0
2nd District		
Bansud	39.0	19.9
Bongabong	35.8	25.1
Bulalacao	51.5	40.0
Gloria	35.5	18.3
Mansalay	41.8	35.5
Pinamalayan	31.7	17.0
Roxas	29.7	21.1

Source: Philippine Statistics Authority–World Bank Estimation of Local Poverty in the Philippines

HEALTH

Number and Rate of Births, Total Deaths, Infant and Maternal Deaths

Indicators	2014		2015		2016	
	No.	Rate	No.	Rate	No.	Rate
Births	16,685	20.00	17,312	20.50	11,614	13.60
Total Deaths	2,696	3.20	3,063	3.60	3,199	3.80
Infant Deaths	99	5.90	77	4.40	80	6.90
Maternal Deaths	4	0.23	1	0.06	1	8.60

Source: Provincial Health Office, 2016

Morbidity: Leading Causes, Number and Rate per 100,000 Population, Comparative Five Year Average (2012-2016) and 2016

Causes	2016		5-Year Average	
	No.	Rate	No.	Rate
1. Acute Respiratory Infection	35,447	4,154	26,933	3,156
2. Hypertension	6,455	756	3,167	371
3. Animal Bite	4,951	580	2,054	241
4. Wound	4,061	476	1,584	186
5. Pneumonia	3,503	410	2,996	351
6. Acute Gastroenteritis	3,388	397	1,673	196
7. Urinary Tract Infection	2,933	344	2,548	299
8. TB Respiratory	2,045	240	1,789	210
9. Bronchitis	1,965	230	2,445	287
10. Influenza	1,669	196	1,686	198

Source: Provincial Health Office, 2016

Infant Morbidity: Leading Causes, Number and Rate per 100,000 Population Comparative Five Year Average (2012-2016) and 2016

Causes	2016		5-Year Average	
	No.	Rate	No.	Rate
1. ARI	5,248	614.97	2,479	290.49
2. Pneumonia	357	41.83	489	57.30
3. Acute Gastroenteritis	354	41.48	147	17.23
4. Bronchitis	226	26.48	389	45.58
5. Rhinitis	169	19.80	150	17.58
6. Acute Viral Infection	103	12.07	114	13.36
7. Skin Problem	85	9.96	172	20.16
8. Acute Febrile Illness	28	3.28	1	0.12
9. Otitis Media	27	3.16	21	2.46
10. Tonsillitis	25	2.93	131	15.35

Source: Provincial Health Office, 2016

Mortality: Leading Causes, Number and Rate per 100,000 Population Comparative Five Year Average (2012-2016) and 2016

Causes	2016		5-Year Average	
	No.	Rate	No.	Rate
1. Heart Disease	471	55	603	71
2. Pneumonia	370	43	299	35
3. Cancer All Forms	307	36	245	29
4. Senelity	220	26	244	29
5. Hypertension	181	21	144	17
6. Diabetes Mellitus	137	16	83	10
7. Respiratory Tuberculosis (PTB)	107	13	150	18
8. Chronic Obstructive Pulmonary Disease	153	18	100	12
9. Renal Failure	96	11	51	6
10. Septicemia	68	8	70	8

Source: Provincial Health Office, 2016

Infant Mortality per 100,000 Population Comparative Five Year Average (2012-2016) and 2016

Causes	2016		5-Year Average	
	No.	Rate	No.	Rate
1. Sepsis/Septicemia	19	1.64	17	1.46
2. Prematurity	16	1.38	19	1.64
3. Pneumonia	14	1.21	16	1.38
4. Acute Respiratory Syndrome	6	0.52	3	0.26
5. Heart Disease	5	0.43	6	0.52
6. Congenital Malformation	3	0.26	3	0.26
7. Down Syndrome	2	0.17	3	0.26
8. Acute Gastro Enteritis w/ Severe/Moderate Dehydration	2	0.17	11	0.95
9. Sudden Infant Death Syndrome	2	0.17	3	0.26
10. Meningitis	2	0.17	1	0.09

Source: Provincial Health Office, 2016

Nutritional Status

Age Group (months)	Number of Preschool Children Weighed by Nutritional Status and Sex											
	Normal			Underweight			Severely Underweight			Overweight		
	Boys	Girls	Total	Boys	Girls	Total	Boys	Girls	Total	Boys	Girls	Total
0-5	4,060	4,148	8,208	90	84	174	34	44	78	76	75	151
6-11	4,245	3,748	7,993	175	152	327	64	32	96	40	55	95
12-23	8,012	7,741	15,753	539	470	1,009	152	136	288	101	68	169
24-35	8,236	8,076	16,312	692	599	1,291	169	158	327	92	71	163
36-47	8,618	8,137	16,755	755	690	1,445	199	134	333	81	75	156
48-59	8,857	8,340	17,197	707	702	1,409	148	141	289	89	48	137
60-71	8,632	8,220	16,852	710	660	1,370	182	176	358	63	32	95
Total	50,660	48,410	99,070	3,668	3,357	7,025	948	821	1,769	542	424	966
% Weighed	90.70	91.30	91.00	6.57	6.33	6.50	1.70	1.50	1.60	0.97	0.79	0.88

Source: Provincial Health Office, 2016

Health Facilities and Personnel

Facilities	Number	Practitioners (government)	Number
Private Hospitals	14	Physicians	24
Government Owned Hospitals	7	Nurses	28
Private Clinics	46	Nutritionist	1
Rural Health Units	17	Medical Technologist	14
City Health Office	2	Dentists	17
Barangay Health Station	297	Midwives	139
Botika ng Lalawigan	1	Engineers/Sanitary Inspectors	19
Botika ng Bayan	1	Active BHWs	3,872

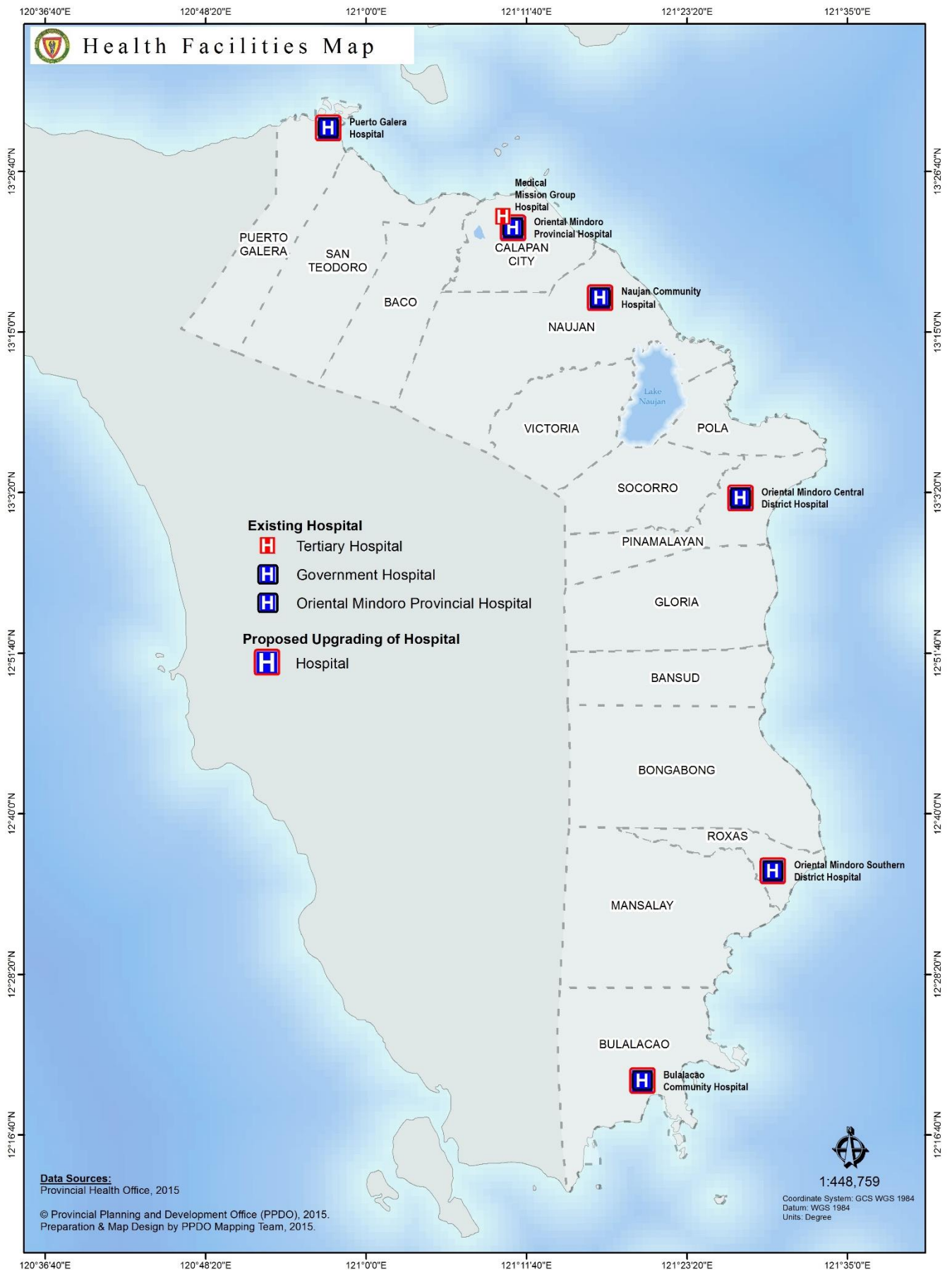
Source: Provincial Health Office, 2016

DOH-Licensed Health Facilities

Name of Infirmary	Government/ Private
1. Naujan Municipal Hospital	Government
2. Oriental Mindoro Central District Hospital	Government
3. Oriental Mindoro Southern District Hospital	Government
4. Bulalacao Community Hospital	Government
5. Renato Umali Reyes Hospital of Bongabong	Government
6. Puerto Galera People's Hospital	Government
7. Umali Medical Clinic	Private
8. Children's Medical Clinic	Private
9. Mina De Oro General Hospital	Private
10. Nuestro-Espiritu Medical-Surgical and Diagnostic Clinic	Private
11. Saint Lawrence Hospital	Private
12. Señor Tesoro Hospital	Private
13. Delos Reyes Medical Clinic	Private
14. Grace Mission Hospital	Private
15. Atienza Polyclinic	Private
16. St. Paul General Hospital	Private
Name of Hospital (Level I)	Government/ Private
1. Oriental Mindoro Provincial Hospital	Government
2. Sta. Maria Village Clinic	Private
3. Hospital of the Holy Cross	Private
4. Ma. Estrella General Hospital	Private
5. Pinamalayan Doctors' Hospital	Private

Source: Provincial Health Office, 2016

Health Facilities Map



Data Sources:
Provincial Health Office, 2015

© Provincial Planning and Development Office (PPDO), 2015.
Preparation & Map Design by PPDO Mapping Team, 2015.

Coordinate System: GCS WGS 1984
Datum: WGS 1984
Units: Degree



EDUCATION

Facilities (SY2016-2017)

Facilities	Province	Calapan City
Educational Districts	18	3
Public Pre- Elementary Schools	419	49
Public Elementary Schools	421	49
National High Schools	83	9
Private Pre-Elementary Schools	47	3
Private Elementary Schools	43	13
Private Secondary Schools	45	6
Public Senior High School	60	5
Non-DepEd Senior High School	37	14
Government Owned Tertiary (Vocational/Technical and Colleges) -MinSCAT Victoria and Bongabong	2	1

Source: Department of Education-Division of Oriental Mindoro and Schools Division of Calapan City

Enrollment in Government and Private Schools By Level of Education

Educational Level	2016-2017				
	Province		Calapan City		
	Public	Private	Public	Private	LUC/SUC
Pre-Elementary	15,702	746	2,143	204	
Elementary	104,447	4,088	16,743	1,805	
Secondary	45,740	13,997	10,150	1,627	147
Senior High School	6,795	4,028	1,204	1,545	149

Source: Department of Education-Division of Oriental Mindoro and Schools Division of Calapan City

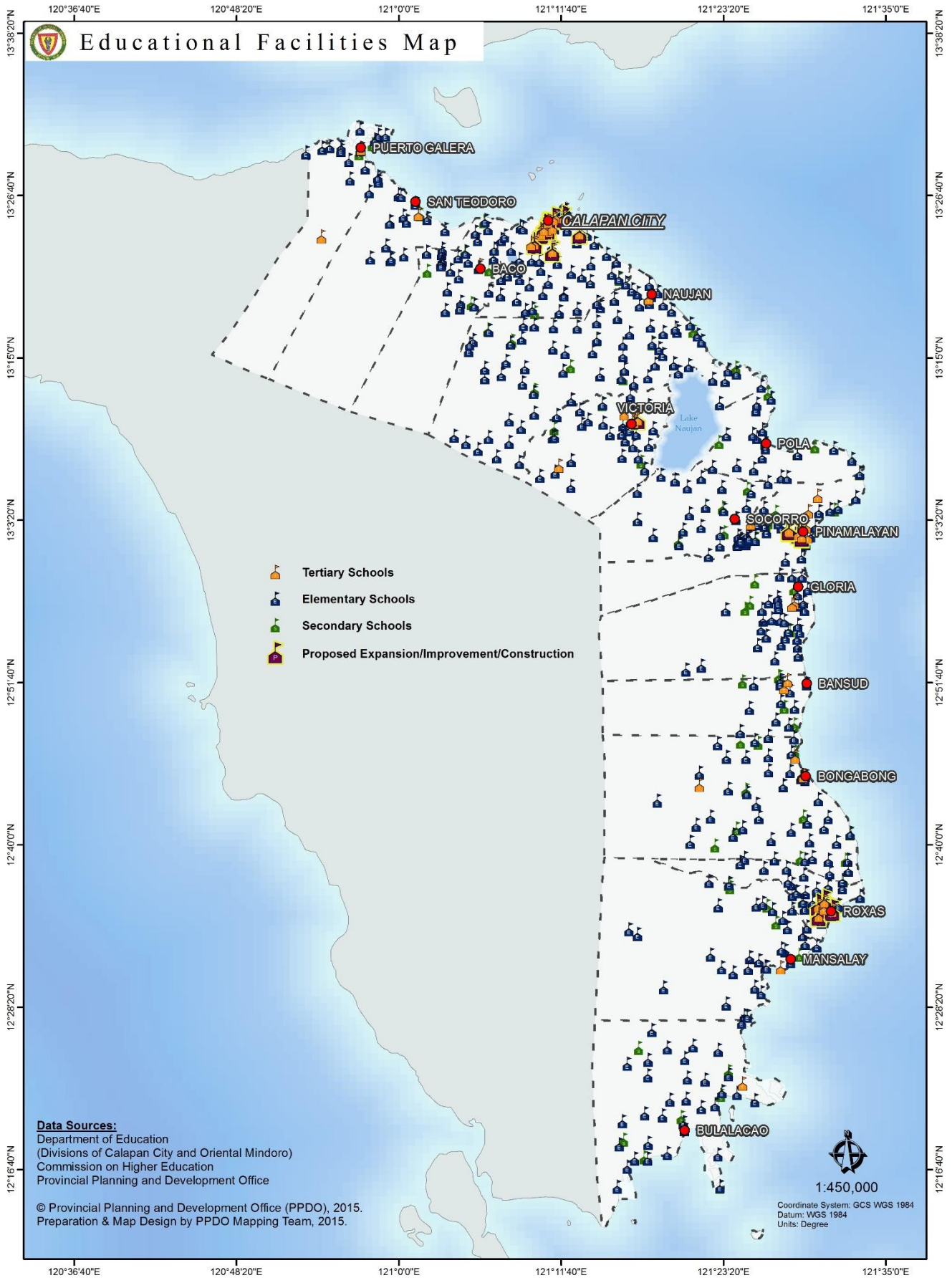
Performance Indicators in Public Elementary and Secondary Schools, 2015-2016

Performance Indicators	Province		Calapan City	
	Public Elementary Schools	Public Secondary Schools	Public Elementary Schools	Public Secondary Schools
Net Enrolment Rate	91.56	69.36	97.62	85.32
Cohort Survival Rate	98.56	90.63	96.35	84.20
School Leavers Rate	0.70	3.26	0.61	4.13
Promotion Rate	97.15	87.41	99.85	99.31
Completion Rate	95.49	79.35	96.35	84.20

Source: Department of Education-Division of Oriental Mindoro and Schools Division of Calapan City

Note: Performance indicators are in percent

Education Facilities Map



SOCIAL WELFARE SERVICES

City/ Municipality	No. of Social Worker		No. of Day Care Worker		No. of Day Care Centers	No. of Children Served		
	Male	Female	Male	Female		Male	Female	Total
Baco		1		32	32	622	614	1,236
Bansud		2		52	52	542	634	1,176
Bongabong		2		31	31	705	630	1,335
Bulalacao		0		55	55	735	747	1,485
Calapan City	2	5	2	69	69	805	1,995	2,800
Gloria		2		34	34	765	850	1,615
Mansalay		0		52	52	545	705	1,250
Naujan		3		78	78	438	714	1,152
Pinamalayan		3		59	59	1,017	1,084	2,101
Pola		1		23	23	371	495	866
Puerto Galera	1	1		13	13	409	485	894
Roxas		1		47	47	1,551	1,126	2,677
San Teodoro		2		13	13	183	192	375
Socorro		1		41	41	588	559	1,147
Victoria		1	1	31	31	610	512	1,122
PGOrM-PSWDO	1	7		2	1	28	24	52
DSWD-SWADT*		2						
Oriental Mindoro	4	34	3	632	630	9,914	11,366	21,283

Source: Provincial Social Welfare and Development Office, 2016

*SWADT - Social Welfare and Development Team

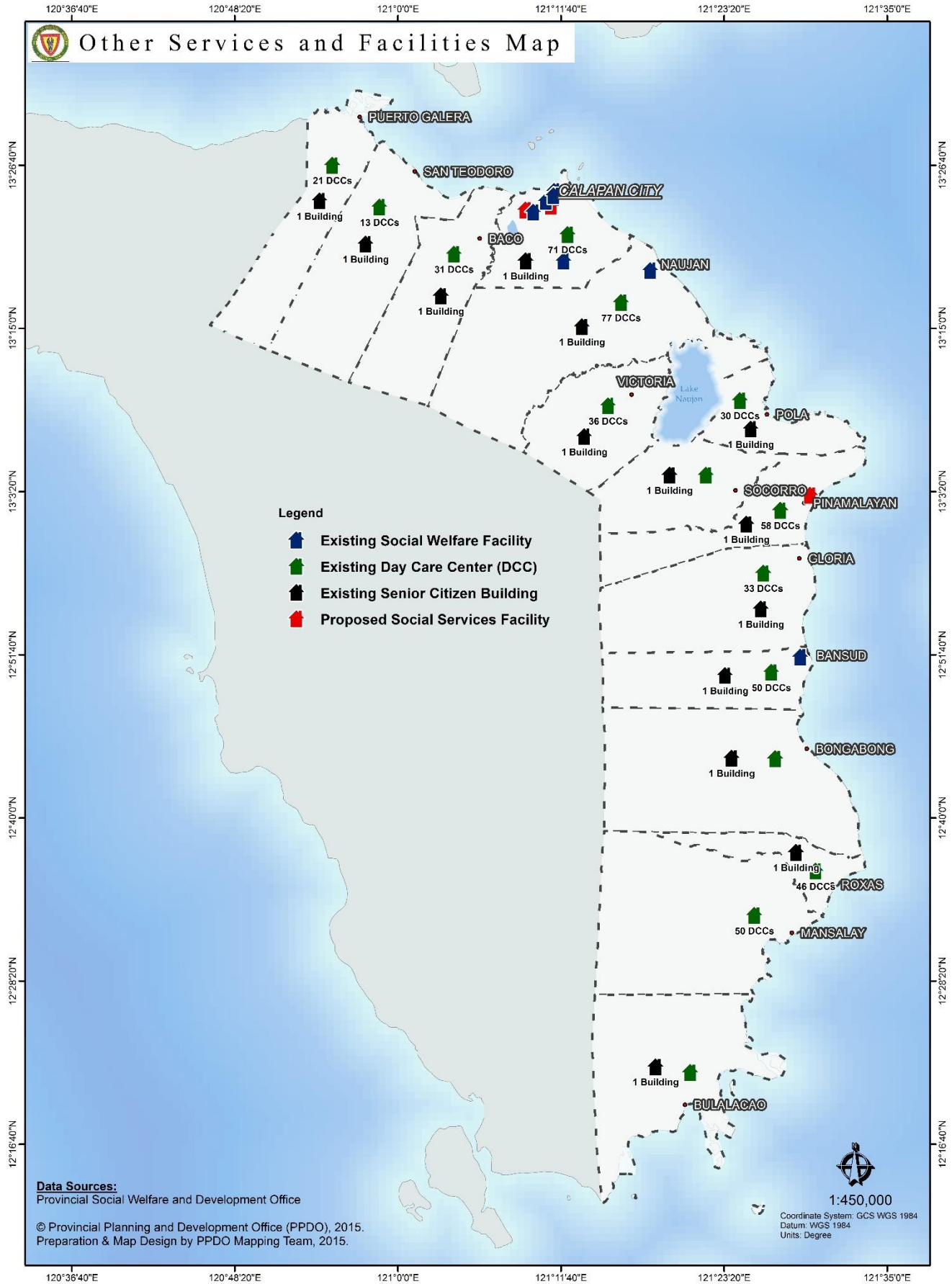
City/Municipality	No. of Registered Senior Citizens			No. of Persons with Disability		
	Male	Female	Total	Male	Female	Total
Baco	952	1,387	2,339	257	227	484
Bansud	1,052	1,594	2,646	295	215	510
Bongabong	1,514	2,206	3,720	425	335	760
Bulalacao	703	892	1,595	269	177	446
Calapan City	4,100	5,633	9,733	728	646	1,374
Gloria	1,476	1,953	3,429	337	348	685
Mansalay	957	1,309	2,266	252	167	419
Naujan	1,680	2,556	4,236	645	607	1,252
Pinamalayan	2,345	3,296	5,641	527	446	973
Pola	1,230	1,511	2,741	341	365	706
Puerto Galera	915	1,253	2,168	272	233	505
Roxas	950	1,320	2,270	266	234	500
San Teodoro	336	499	835	155	168	323
Socorro	784	1,259	2,043	283	234	517
Victoria	2,118	2,650	4,768	265	243	508
Oriental Mindoro	21,112	29,318	50,430	5,317	4,645	9,962

Source: Provincial Social Welfare and Development Office, 2016 (Senior Citizens)

Department of Social Welfare and Development Office 2015 Listahanan Database (PWDs)



Social Welfare Services and Facilities Map



PROTECTIVE SERVICES

Crime Statistics and Protective Facilities

	No.		No.
a. Crime Statistics		c. Crime Against Property	
Crime Volume	1,982	Robbery	77
Crime Solved	1,192	Theft	94
Crime Unsolved	1,570	Carnapping	41
Crime Clearance Efficiency (%)	79.21	Cattle Rustling	1
Crime Solution Efficiency (%)	60.14		
Ave. Monthly Crime Rate (AMCR) (%)	18.78	d. Facilities	
b. Crime Against Person		Building	26
Murder	68	Serviceable Vehicles:	
Homicide	67	Patrol Jeep	33
Physical Injuries	406	Patrol Cars	11
Rape	106	Motorcycles	24
		Trucks	2

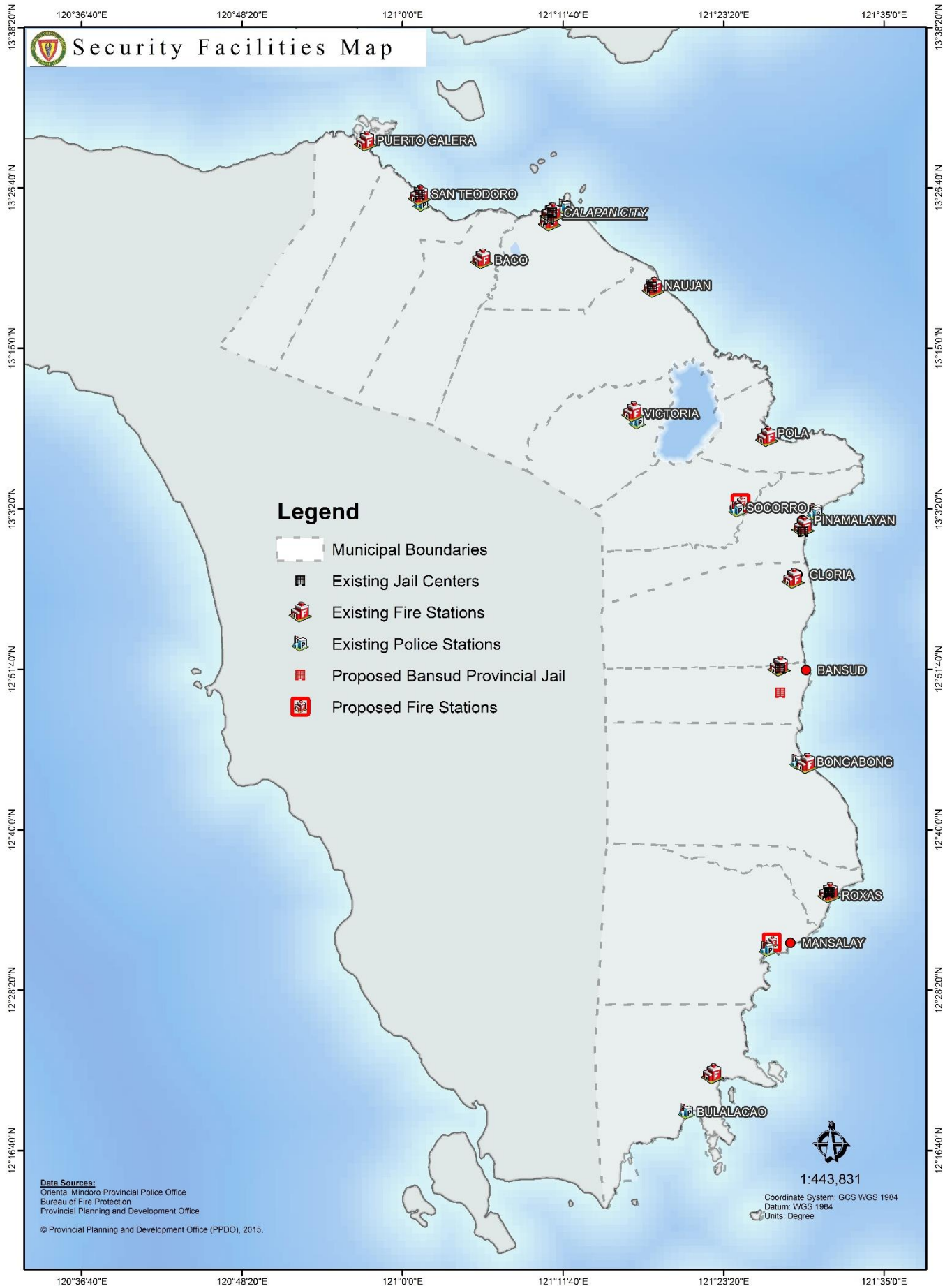
Source: Philippine National Police, 2016

Fire Prevention

Municipality	No. of Fire Stations	No. of Fire Trucks			No. Office Personnel	Remarks
		BFP	LGU	NGO		
Office of the Provincial Fire Marshal	1 (Office)				7	Office (Rented)
Baco	1	1			6	
Bansud	1	2	1		9	
Bongabong	1	1			7	
Bulalacao	1	1			7	
Calapan City	1	3	2	3	19	
Gloria	1	2			9	
Mansalay	1	1	1		7	
Naujan	1	2			9	
Pinamalayan	1	1		1	7	
Pola	1	2			9	
Puerto Galera	1	1			7	
Roxas	1	2			9	
San Teodoro	1	1	1		7	
Socorro	1	1			7	
Victoria	1	2	1		10	1 personnel inactive
Total	16	23	6	4	136	

Source: Bureau of Fire Protection, 2016

Security Facilities Map



FINANCIAL PROFILE

INCOME CLASSIFICATION OF CITY/MUNICIPALITY

3rd Class Component City	1st Class	2nd Class	3rd Class	4th Class
<ul style="list-style-type: none"> • Calapan City 	<ul style="list-style-type: none"> • Bongabong • Mansalay • Naujan • Pinamalayan • Puerto Galera 	<ul style="list-style-type: none"> • Bansud • Gloria • Roxas • Victoria 	<ul style="list-style-type: none"> • Baco • Bulalacao • Pola • Socorro 	<ul style="list-style-type: none"> • San Teodoro

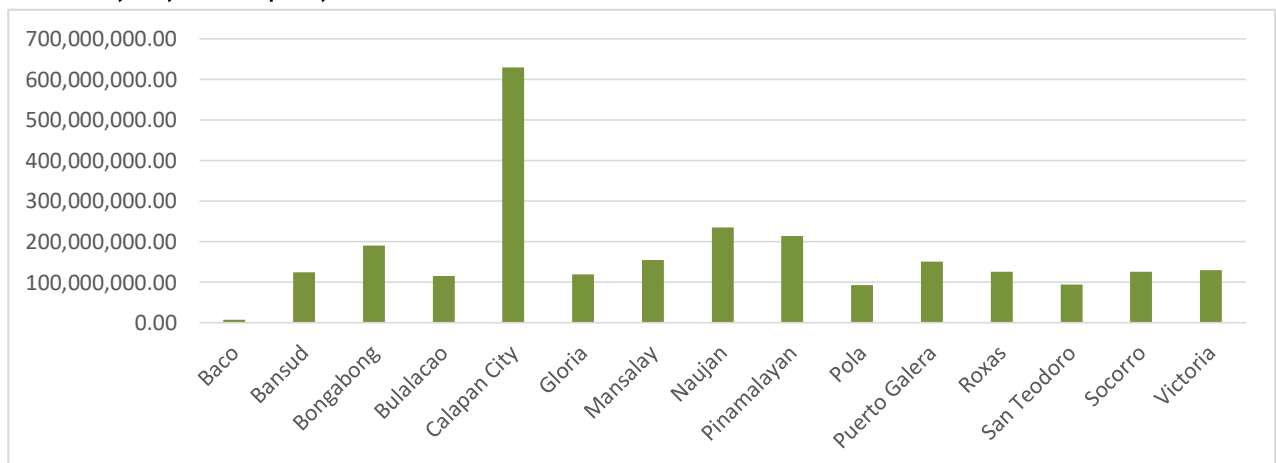
Source: Provincial Treasurer's Office, 2016

ANNUAL INCOME AND BUDGET PER CITY/ MUNICIPALITY

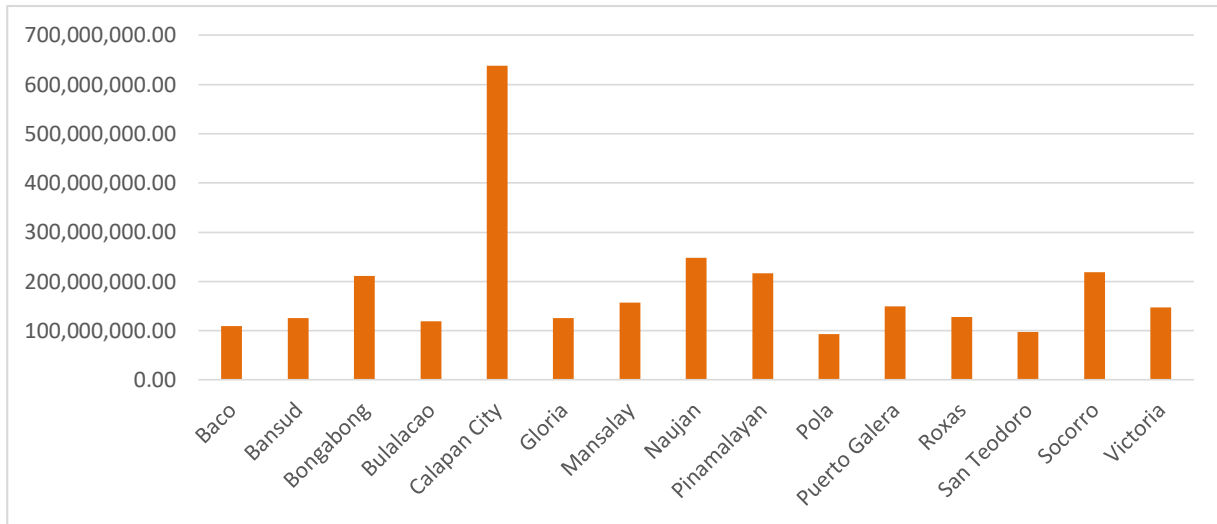
City/ Municipality	Income [Php]	Budget [Php]
Baco	7,525,778.94	109,084,877.30
Bansud	124,093,020.31	125,493,022.75
Bongabong	190,599,645.49	211,549,561.86
Bulalacao	114,943,195.68	119,060,422.60
Calapan City	630,029,044.72	637,935,286.67
Gloria	119,477,818.57	125,422,960.81
Mansalay	155,150,062.72	156,638,918.59
Naujan	234,282,200.85	248,048,596.51
Pinamalayan	213,203,491.58	216,307,192.00
Pola	92,684,238.45	92,906,094.36
Puerto Galera	150,022,205.42	149,104,623.00
Roxas	126,157,525.56	127,305,789.56
San Teodoro	93,980,451.81	96,990,183.23
Socorro	125,132,610.74	218,807,013.20
Victoria	129,538,794.33	147,265,879.48
Total	2,506,820,085.17	2,781,920,421.92

Sources: Provincial Treasurer's Office and Provincial Budget Office, 2016

Income by City/Municipality, 2016



Budget by City/Municipality, 2016



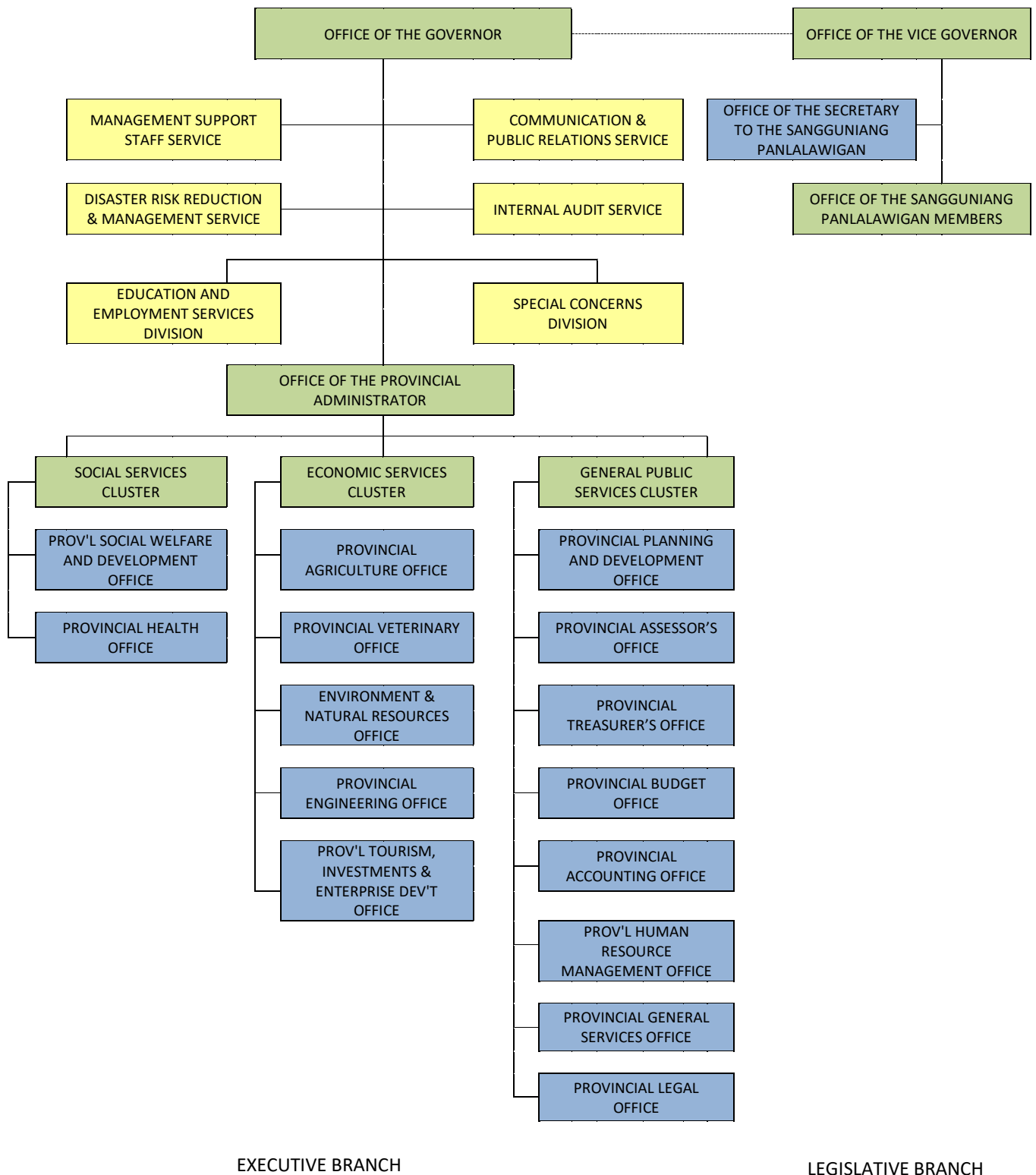
**Provincial Government of Oriental Mindoro
INCOME AND EXPENDITURES, 2016**

Item	Amount (PhP)
Income and Expenditures (GF, SEF, BLOM)	
Income (General and Special Education Fund)	1,372,003,550.50
Expenditures/Obligations	1,105,669,787.19
Total Revenues by Source	
Tax Revenue/Special Education Tax	76,454,188.15
Permit and Licenses	923,100.00
Service Income	95,934,105.43
Business Income	9,331,070.92
Other Income (Interest Income, IRA, Misc. Income)	1,185,009,379.78
Income from Grants and Donations	4,351,706.22
Total Expenditures by Object – GF and SEF	
Personal Services	407,747,069.85
MOOE	544,738,963.85
Capital Outlays	153,183,753.49

Source: Provincial Accounting Office, 2016

INSTITUTIONAL PROFILE

ORGANIZATIONAL CHART OF THE PROVINCIAL GOVERNMENT OF ORIENTAL MINDORO



PROVINCIAL GOVERNMENT PERSONNEL BY OFFICE

(as of December 31, 2016)

Name of Office	No. of Plantilla Positions	No. of Filled-up Positions
1. Office of the Governor		
Management Support Staff Division	13	12
Internal Audit Service Division	7	5
Special Concerns Division	9	9
Disaster Risk Reduction and Management Division	6	4
Communication and Public Relations Division	14	10
Education and Employment Services Division	7	6
2. Office of the Vice-Governor and Sangguniang Panlalawigan	60	53
3. Office of the Provincial Administrator	32	23
4. Provincial Planning and Development Office	33	24
5. Provincial Treasury Office	37	27
6. Provincial Accounting Office	27	26
7. Provincial Budget Office	18	12
8. Provincial Assessment Office	30	23
9. Provincial Human Resource Management Office	20	15
10. Provincial General Services Office	41	39
11. Provincial Legal Office	14	11
12. Provincial Social Welfare and Development Office	21	18
13. Provincial Health Office		
Technical Services	36	26
Oriental Mindoro Provincial Hospital	187	150
Oriental Mindoro Central District Hospital	47	31
Naujan Community Hospital	24	20
Bulalacao Community Hospital	21	19
Oriental Mindoro Southern District Hospital	68	53
14. Provincial Engineering Office	120	109
15. Provincial Agriculture Office	51	36
16. Provincial Veterinary Office	20	17
17. Environment and Natural Resource Office	25	19
18. Provincial Tourism, Investment and Enterprise Development Office	21	9
19. Botika ng Lalawigan ng Oriental Mindoro	1	1
Total	1,010	807

Source: Provincial Human Resource Management Office, 2016

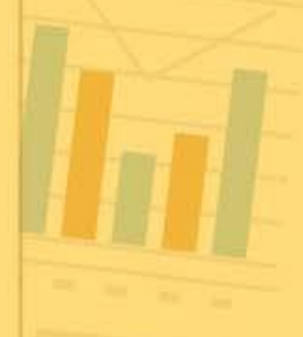
PROVINCIAL GOVERNMENT PERSONNEL BY STATUS

(as of December 31, 2016)

Status	Male	Female	Total
Permanent			
First Level	231	191	422
Second Level	116	237	353
Co-Terminous			
First Level	7	2	9
Second Level	4	5	9
Elective			
	11	3	14
Total	369	438	807

Source: Provincial Human Resource Management Office, 2016





Placeholder text consisting of several horizontal lines.



Category	Item 1	Item 2	Item 3	Item 4
Q1	100	200	300	400
Q2	150	250	350	450
Q3	200	300	400	500
Q4	250	350	450	550
Q5	300	400	500	600
Q6	350	450	550	650
Q7	400	500	600	700
Q8	450	550	650	750
Q9	500	600	700	800
Q10	550	650	750	850

